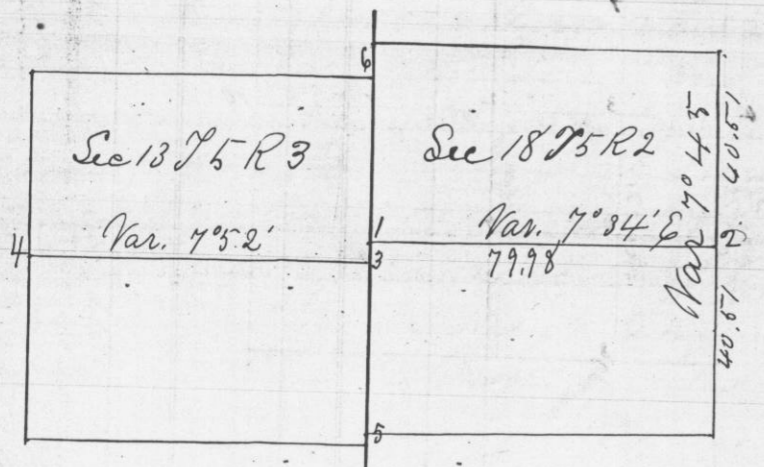


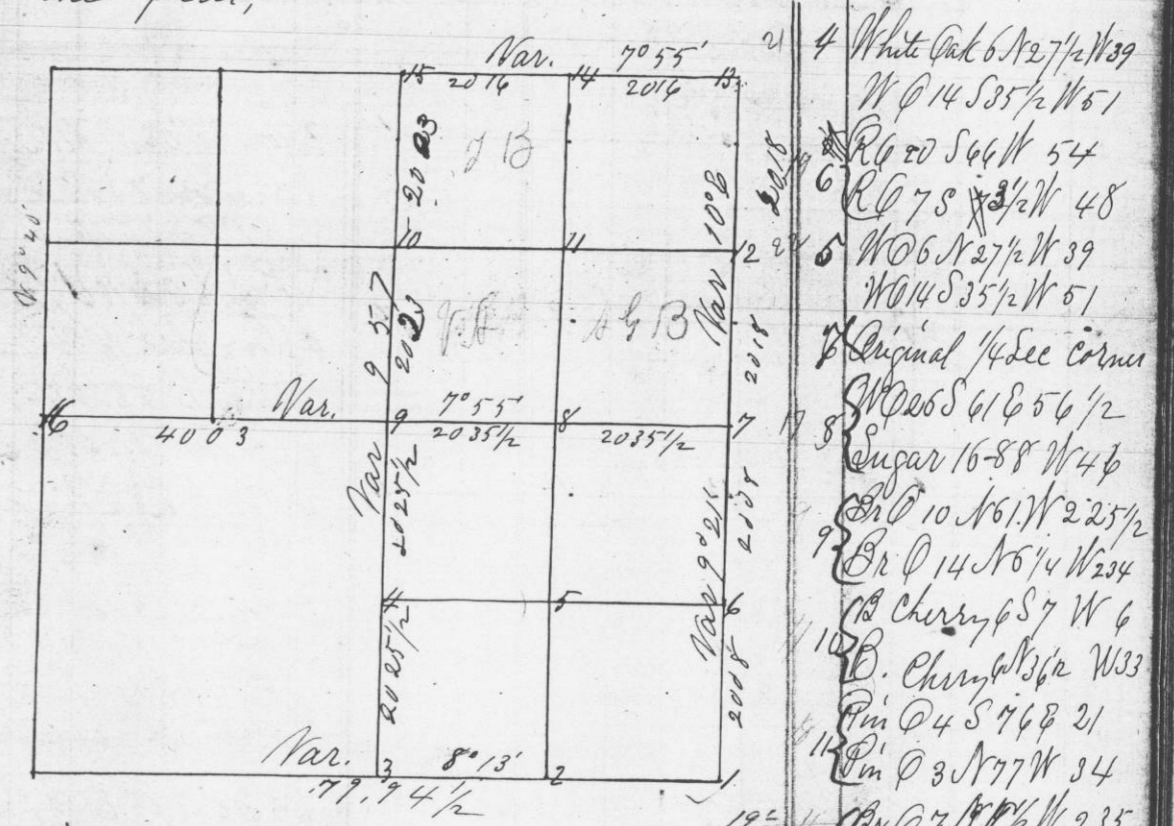
Survey in Sections 13 T5 R3 + Secs 18 T5 R2 made on the 13th day of May 1875 for Gottlieb Wilkie - Edward McCormick and Mrs. Alexander as shown in the following plat and notes.



- No 1 Br @ 8 A 74 @ 30 Br @ 9 S 63 @ 40. This corner was established by S Wiltze, Co Surveyor 1844
- No 2 W @ 4 S 81 1/4 W @ 29 W @ 5 N 57 1/2 @ 43
This corner I set after re-survey of the line between ~~sections~~ between Secs 17 + 18
- No 3 This corner is 27 links south of No 1
- No 4 Stone corner
The corners at 5 are 4 links apart and at 6 they are 50 links apart. The corners pertaining to Range 2 being in each case the more northerly.

Joel Barber
County Surveyor

Survey of Section 26 T4 R4 made on the 27th day of May 1875 for A. G. Bonham + others. The lengths and variations of the lines are shown in the following plat and the corners established are described in the following notes as numbered at the corners on the plat.



- No 1 Butternut 14 S 58 3/4 @ 63
This is the corner to Secs 25-26 35 + 36 and was found by measuring the whole section lines east and west of it and to the 1/4 section corners next north and south of it. Planted rock 30 x 24 x 7 inches
- No 2 W @ 7 S 7 3/4 @ 20 1/2
W @ 17 S 46 1/2 W @ 43
- No 3 1/4 section corner - Equidistant
Hickory 9 S 68 @ 19 - W @ 8 S 7 W @ 10
Black Ash 3 N 10 @ 1 1/2

- 4 White Oak 6 N 27 1/2 W @ 39
W @ 14 S 35 1/2 W @ 51
- 5 W @ 20 S 66 W @ 54
W @ 7 S 3 1/2 W @ 48
- 6 W @ 6 N 27 1/2 W @ 39
W @ 14 S 35 1/2 W @ 51
- 7 Original 1/4 Sec corner
W @ 26 S 61 @ 56 1/2
- 8 Sugar 16-88 W @ 46
W @ 10 N 61 W @ 22 1/2
- 9 Br @ 14 N 61 W @ 234
- 10 Cherry 6 S 7 W @ 6
- 11 B. Cherry 6 N 36 W @ 33
- 12 Pin @ 4 S 76 @ 21
- 13 Pin @ 3 N 77 W @ 34
- 14 Br @ 7 N 77 1/2 W @ 235
- 15 Br @ 7 N 19 @ 288
- 16 Original section cor
W @ 8 S 25 W @ 20 1/2
- 17 W @ 8 N 74 W @ 38
- 18 Original 1/4 corner

Joel Barber
County Surveyor