

Survey made for Joseph Gerhard in Sections 31 Town 3 R. 2 & Sec. 36 T 3 R 3 on the 15th day of April 1875

Commenced at Town Corner and run North on line between Secs. 31 & 36 Var. 8° 30' E 80.85 fell 66 links west of corner for Sec. 36

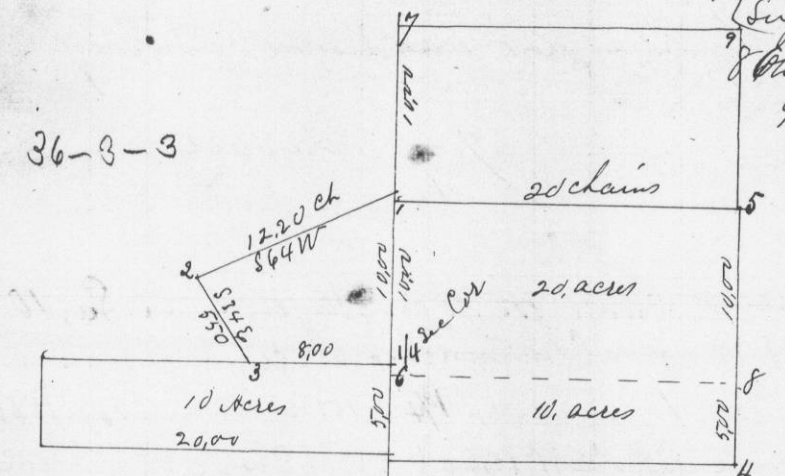
Identified Sec. corners by two stumps remaining and took new bearing for N.W. corner of Sec. 31

Bar Oak 8 N 1 W 53 1/2 Bar Oak 4 N 73 W 31 Corrected back 21.14 3/4 to 1/4 post for Sec 31 Black Cherry 8 N 42 W 17

Sugar 8 S 25 1/2 E 24 40.29 1/2 Set stake for 1/4 post Elm 4 S 37 E 54 Elm 3 S 55 E 52 (for Sec. 31) 45.33 Set stake for south boundary of Gerhard's land in Sec. 31

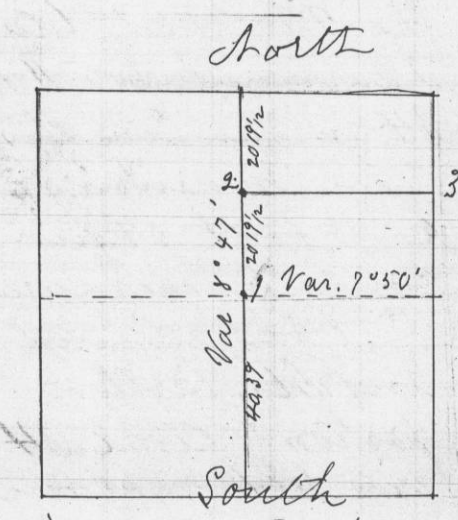
Ran East from 1/4 post to old corner set by Mahood and by subsequent subdivisions established the following corners.

- 1 Black Cherry 6 S 77 1/2 W 52 For Sec 31
- 2 White Oak Stump 20 N 30 3/4 E 96
- 3 Black Cherry 13 South 82 1/2 W 42
- 4 W.O. 24 N 49 W 15 Hickory 6 S 57 E 36
- 5 W.O. 20 S 40 W 35 W.O. 14 S 70 1/2 E 27
- 6 Elm 4 S 37 E 54 Elm 3 S 55 E 52



Attest Joel Barber County Surveyor

Survey in Sec. 14 Town 7 R 3 in town of Marion, as shown in the following plat



- Corner No. 1 Post in center of Section 14 T 7 R 3 Burr Oak 6 S 1 E 71 Black Oak 17 S 53 1/2 W 78
- No. 2 - 1/16 corner North of center of Sec 34 Black Oak 8 N 63 W 30 Black Oak 18 S 69 1/2 E 77
- No. 3 Old corner

This section was divided by right lines across from 1/4 post to 1/4 post and the centre post placed at the intersections of the corrected lines. April 21st 1875 Made for Thomas Duffley Joel Barber County Surveyor