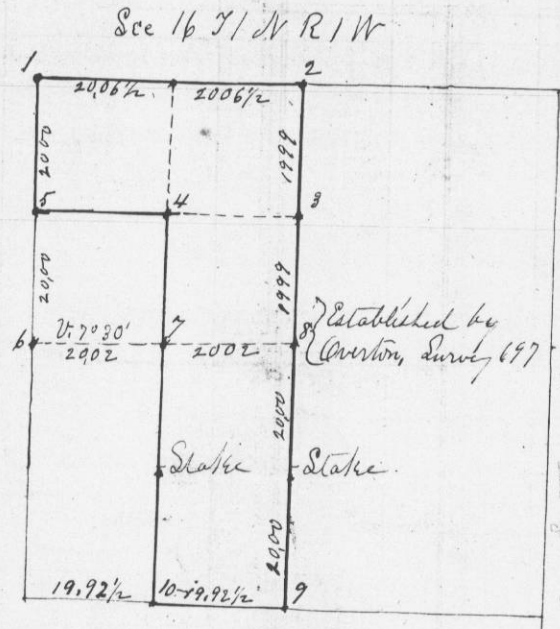


No. 906

Survey made for Nicholas Johnson in Section 16 Sixteen of Town One of Range One West of the Fourth Principal Meridian. Completed on the 19th day of November A.D. 1868

Christ. Hendricks and Andrew Hendricks being first duly sworn as Chainmen.



Notes of Corners

- 1 Red Oak 13 S 39 E 53
Hickory 6 North 2
- 2 Old corner
- 3 Set Stone
- 4 Set Stone. Aspen 8 N 73 1/2 E 97 1/2
Bur Oak 4 S 12 W 99
- 5 Old corner - Set Stone
- 6 Old 1/4 corner
Set Stone
- 7 Set Stone
- 8 Old corner
- 9 Old 1/4 corner
- 10 Set Stone
Cottonwood 8 N 84 1/2 W 87 1/2

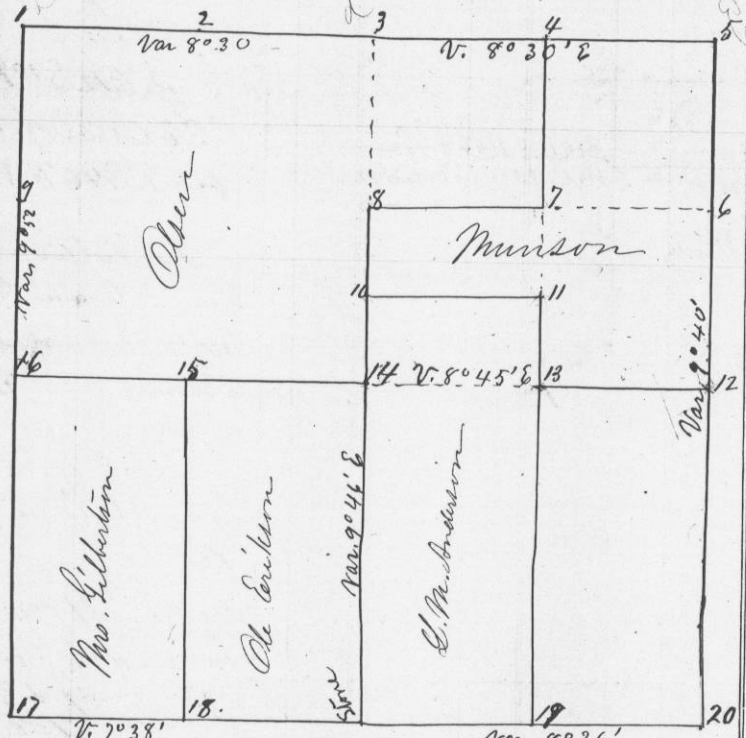
A true diagram and record of Survey

Joel Barber
County Surveyor

No. 907

Survey made for L.M. Anderson and others in Section Thirty Three Town 7 North of Range One West of 4th Principal Meridian. Completed on the fourth day of December A.D. 1868 - Albert Anderson, L.M. Anderson, Ole Erickson-Heyman Nelson and G.G. Olson Chainmen all duly sworn and serving where not interested.

Section 33 Town 7 R 1 W



Notes of learners.

- 1 Br. O 5 S 17 W 40 old.
W.O. 8 N 20 1/2 W 34 new
- 2 W.O. 7 N 17 W 53
W.O. 12 S 14 1/2 E 45
- 3 B.O. 10 N 77 W 144
" 6 S 75 E 16
- 4 B.O. 6 S 21 E 26
" 6 N 68 W 39
- 5 W.O. 7 S 76 E 73
" 8 N 14 E 15
- 6 B.O. 5 S 1 E 232
- 7 W.O. 2 E. N 77 1/2 W 223
" 4 N 74 E 5
- 8 W.O. 12 S 6 E 38
" 10 S 52 3/4 W 92 1/2
- 9 W.O. 8 S 48 W 76
B.O. 18 S 61 E 379
- 10 B.O. 4 S 75 W 9
" 4 N 18 E 15
- 11 Br. O. 4 S 4 W 45
" 4 N 26 W 68
- 12 Blk O 8 N 62 1/2 E 336
W.O. 14 N 25 1/2 W 149
- 13 W.O. 24 N 58 W 94
" 10 S 13 W 96
- 14 Br. O 12 S 50 3/4 W 174
B.O. 7 S 87 1/2 E 69
- 15 Br. O 12 S 83 1/4 W 290
" 14 S 61 1/2 W 362
- 16 B.O. 14 S 79 1/2 W 43
B.O. 7 N 72 E 32
- 17 B.O. 16 N 86 1/2 E 9, 34
- 18 Br. O 9 S 73 1/4 E 141
B.O. 7 S 54 W 152
- 19 B.O. 7 S 56 W 17
B.O. 4 N 42 W 23
- 20 Br. O 12 N 50 W 264
W.O. 14 N 52 E 182

Joel Barber