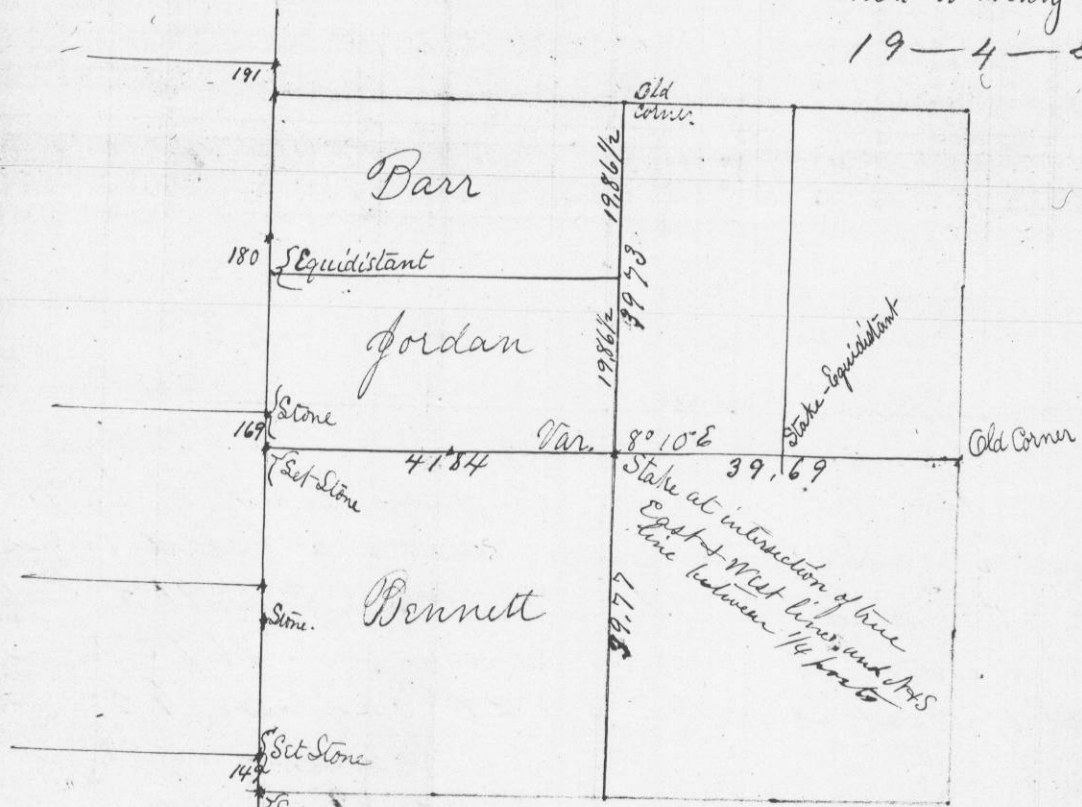


No 904

Survey of Section 19 in Town Four North of Range Five (No) West of 4th Principal Meridian
 Made for E. A. Bennett on the sixth and seventh days of October 1868
 Joseph S. Kidd and Wm Way duly sworn as Chainmen,

Scale one inch to twenty chains
 19-4-5



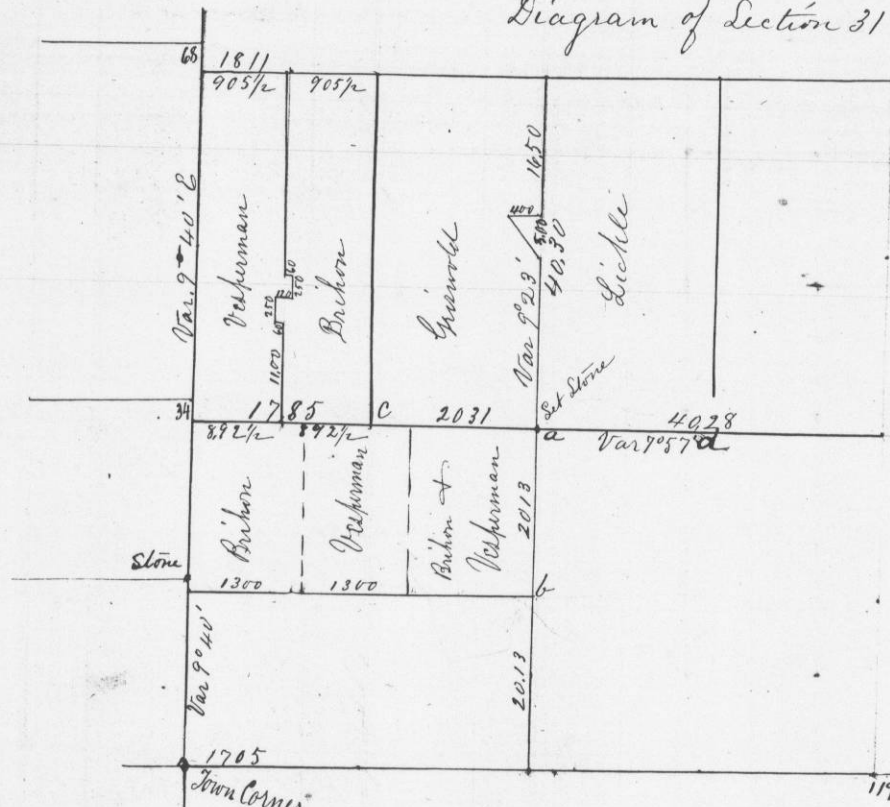
Reestablished the S.W. corner of Section 19 by running and measuring the town line from Quarterpost on East side of Sec. 24 T4 R6 to Quarterpost on East side of Sec. 25 T4 R6
 Distance 80.08 Var. 10°

A true record and diagram of Survey
 Joel Barber
 County Surveyor

No. 905

Survey of Sec. 31 in Town Four of Range 2 West of 4th principal Meridian, made for Birkon + Westerman Completed on the 6th day of November 1868
 John Lockhart, George Bryhon and Charles A. Wright chainmen being first duly sworn,

Diagram of Section 31 T4 R2 W



- 9 a Burr Oak 14 S 73 1/2 E 40
- Sugar Tree 7 N 67 W 8
- 21 b W. Oak 30 S 76 1/2 E 39
- Aspen 6 N 33 1/2 W 22
- 12 c Aspen 7 N 49 W 7
- R. Oak 8 S 49 E 15
- 17 d Br Oak 7 N 30 W 22
- Br Oak 7 S 14 1/2 W 144

A true record and diagram
 of Survey
 Joel Barber
 County Surveyor