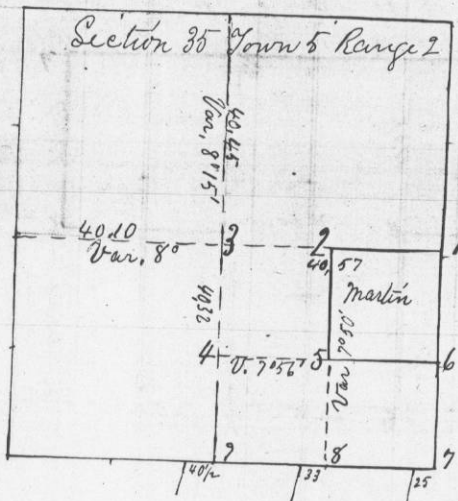


Survey made for Christopher Martin
The North East quarter of the South East
quarter of Section 35 Township Five North
of Range Two West of fourth Principal
Meridian

Daniel Long and Christoph Gancy being first
duly sworn as chainmen,
Surveyed March 16th 1868



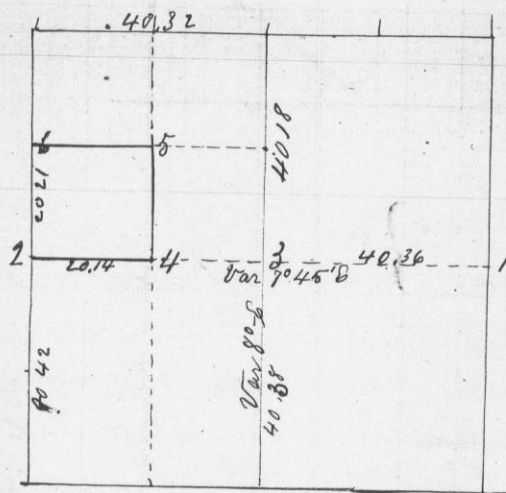
Corners Established by me

- | | | | |
|----|-------------------------------|-----|----------------------------|
| 1 | { Black Oak 8 N 44 1/2 W 4.21 | 196 | { Br. Oak 3 S 39 3/4 E 90 |
| | { Br. " 2 S 59 1/2 W .69 | | |
| 17 | 2 { W.O. 3 for corner tree | 3 | 7 { W.O. 7 S 76 1/2 W 5.7 |
| | { W.O. 8 N 13 E .24 | | |
| 9 | 3 { Br. Oak 14 N 22 E 4.3 | | |
| | { W.O. 4 N 56 1/2 W 1.5 | | |
| 4 | { | 20 | 8 { W.O. 15 S 2.3 E 7.9 |
| | | | |
| | | 7 | 9 { W.O. 24 N 75 1/2 W 7.0 |
| | | | |
| | | | |
| 22 | 5 { W. Oak 10 S 35 E 2.8 | | |
| | { Br. Oak 13 S 22 1/2 W 5.9 | | |

A true record of Survey
Joel Barber
County Surveyor

Survey made for Christopher Martin
South West 1/4 of the N.W. quarter of
Section 36 Town five Range two West
of 4th Principal Meridian,
Daniel Long & Christoph Gancy being
first duly sworn as chainmen,
Surveyed March 17th 1868

Sec. 36 Town 5 R 2 West



Corners Established by me

- | | | | |
|---|-----------------------------|---|--------------------------|
| 6 | 1 { W.O. 30 N 11 1/2 E 12.6 | 4 | { W.O. 12 S 42 W 2.3 |
| | | | { W.O. 14 N 15 E 5.4 1/2 |
| 8 | 2 { W.O. 8 N 44 1/2 W 4.21 | 5 | { Br. O 7 N 15 E 9.0 |
| | { Br. O 2 S 59 1/2 W .69 | | { Br. O 7 N 77 W 10.0 |
| 9 | 3 { W.O. 16 S 19 W 2.3 | 6 | { W.O. 6 N 75 1/4 W 3.0 |
| | { W.O. 6 N 58 W 6.1 | | { Br. O 12 S 13 W 5.6 |

A true record of Survey
Joel Barber
County Surveyor