

Oct. 21<sup>st</sup> 1856

Survey for William Giddred the East half of the South East quarter of section 20 in township 4 North range 5 West shown in the following plat  
Sec 20 S. 4 N. R. 5 W



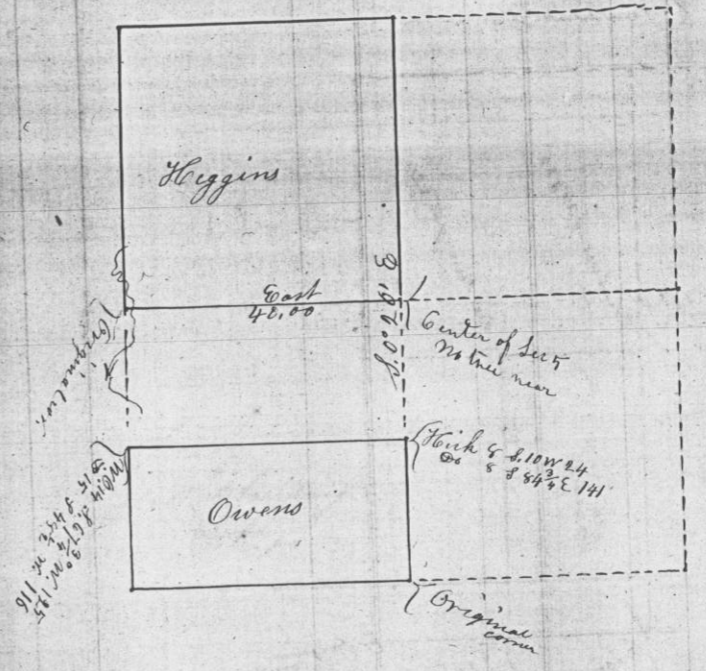
May 20<sup>th</sup> 52

Boston

Original corner  
Survey of 1844

Oct. 22<sup>nd</sup> 1856

Survey for Samuel Higgins & Mrs Owens parts of section five in township 3 South range 5 West - shown in the following plat (Doi):  
Sec 5 S. 3 N. R. 5 W



Original corner

Stick 4 S. 10 W. 24  
on S. 84° E. 141

Original corner  
Survey of 1844