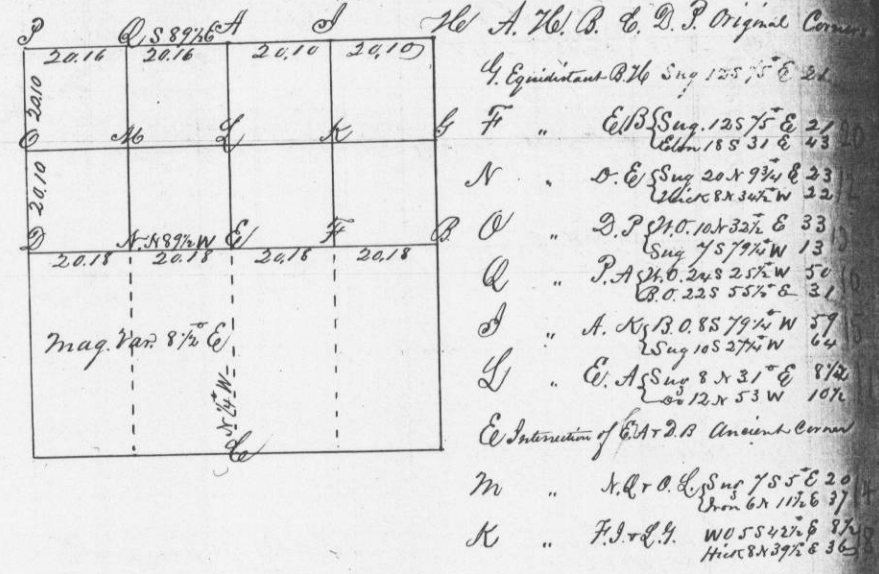


No 883

Sept. 29<sup>th</sup> 1856

Survey for Charles A. Munay. The North half of Section Thirteen in Township Three North Four West of the fourth Principal Meridian, shown in the following plat to wit:

Section 13, T3 N. R4 W.



Overton County Surveyor

No 884

Oct. 14<sup>th</sup> 1856

Survey for J. H. C. McKewin - Chas Boyle and Jacob Hayne parts of section 19 in township 4 North range 2 West - shown in the following plat. viz:

