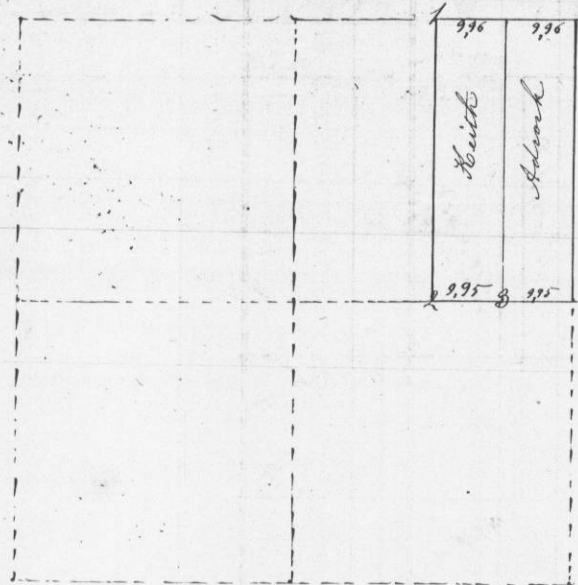


No. 565

May 17<sup>th</sup> 1856

Survey for Adcock & Keith parts of section 5 S. 5 N. & 1 W. shown in the following plat viz.  
Sec. 5 S. 5 N. & 1 W.

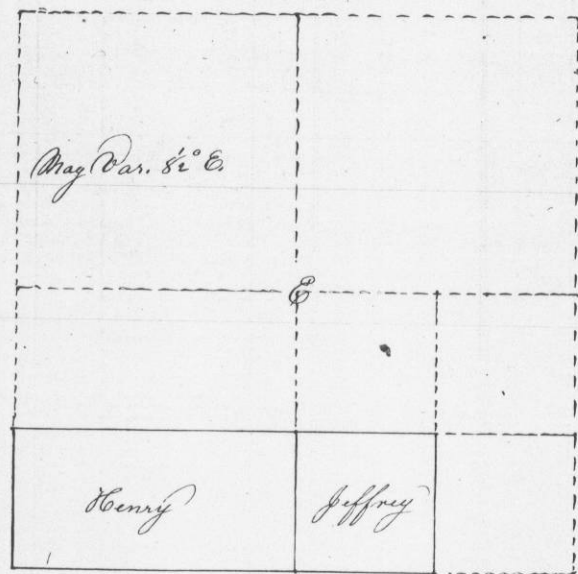


- 15 1 8014 S. 14 E 363  
8017 S 48 E 363
- 17 2 8012 N. 25 E 14  
8014 S. 48 W 47
- 3 8014 N. 12 W 25  
Linder 20 S. 20 W 36

No. 566

May 22<sup>nd</sup> 1856

Survey for G. W. Henry and John Jeffrey parts of section thirteen in township four North range two west - shown in the following plat viz.  
Sec. 13. S. 4 N. & 2 W.



Corners established by running from 1/4 section corner thro the section & putting the center at the intersection of those lines as at E. Smaller divisions in the same manner

Original corner  
8012 N. 25 W 14  
8014 S. 48 W 47

Survey by  
C. J. Overton Co. Surveyor