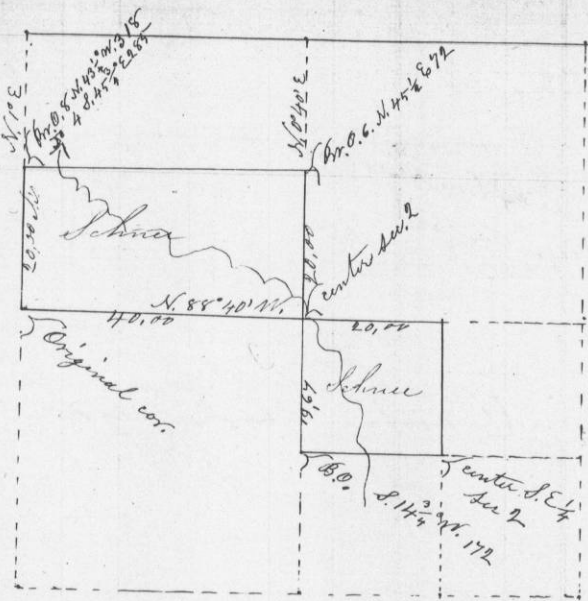


No. 829

Oct. 30<sup>th</sup> 1855

Survey for A. G. Schnee the North West quarter of the South East quarter, and the South half of the North West quarter of section two in township six North range one west of the fourth principal Meridian Grant Co. Mo. shown in the following plat viz:

Sec 2 T. 6 N. R. 1 W.



Center of section - at intersection of lines from 1/4 sec. corners

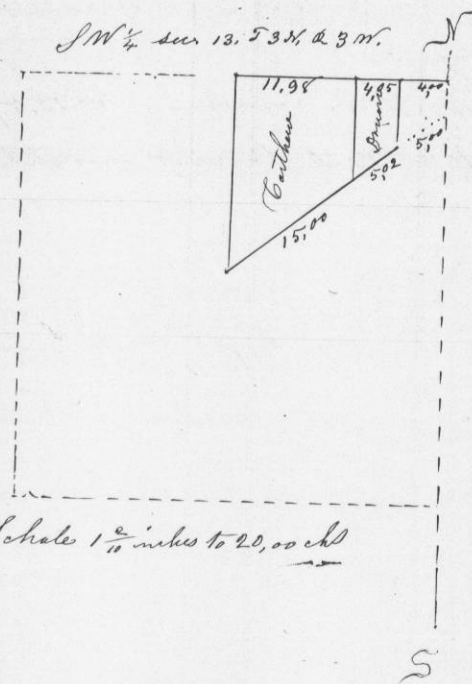
Overton Co. Sur.

No. 830

Nov. 8<sup>th</sup> 1855

Survey for Samuel Druen and Thomas Carthage part of the S.W. 1/4 of Sec 13 in township 3 North range 3 West of the 1/4 principal Meridian shown in the following plat viz:

SW 1/4 sec 13, 53 N. & 3 W.



Scale 1 2/10 inches to 20.00 ch

Overton County Surveyor Grant Co. Mo.