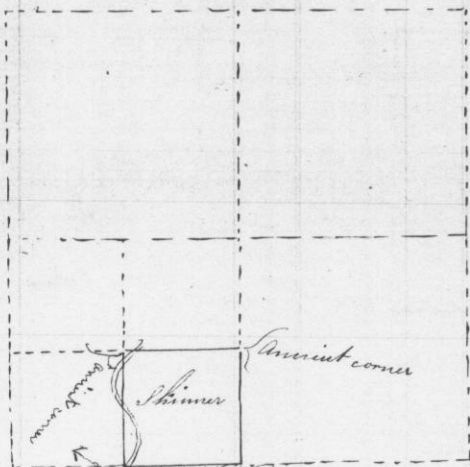


July Second 1855

Survey for Samuel Skinner the South East 1/4 of the S.W. 1/4 of sec 25 in Township 3 North range 2 West - shown in the following plat viz:

Sec 25 T. 3. N. R. 2. W.



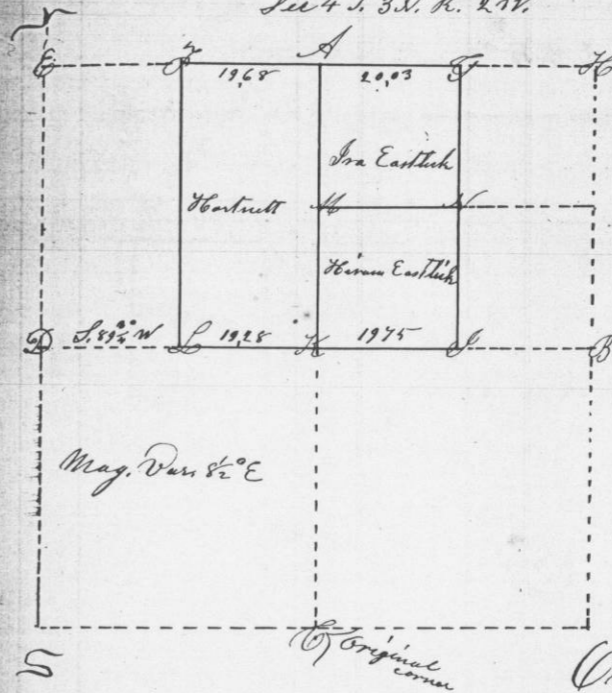
1855  
Corner in Little State river  
a stake on the bank 10 links  
south of the corner

Overton Co. Surveyor

July 10<sup>th</sup> 1855

Survey for Bartholomew Hartnett Ira Eastlick & Thomas Eastlick parts of Section 4 in township 3 N. R. 2 West shown in the following plat.

Sec 4 T. 3. N. R. 2. W.



- 5 Equidistant E-A 5 S 89 1/2 W 21
- 6 Equidistant E-A 5 S 89 1/2 W 21
- 7 " A-B 15 N 0 1/2 W 48 7
- 8 " " 15 S 89 1/2 E 25 7
- 9 " H-B 17 N 0 1/2 W 49 7
- 10 " " 17 S 89 1/2 E 25 7
- 11 Partition of C-A & D-B 17 N 0 1/2 W 49 7
- 12 " " 17 S 89 1/2 E 25 7
- 13 Equidistant D-H 17 South Ch. 12 S. 24 E 53
- 14 " " 17 S 21 1/2 W 60
- 15 N. Int. of G & M-O 17 S 0 1/2 W 72

Mag. Van 8 1/2 E

Overton County Surveyor