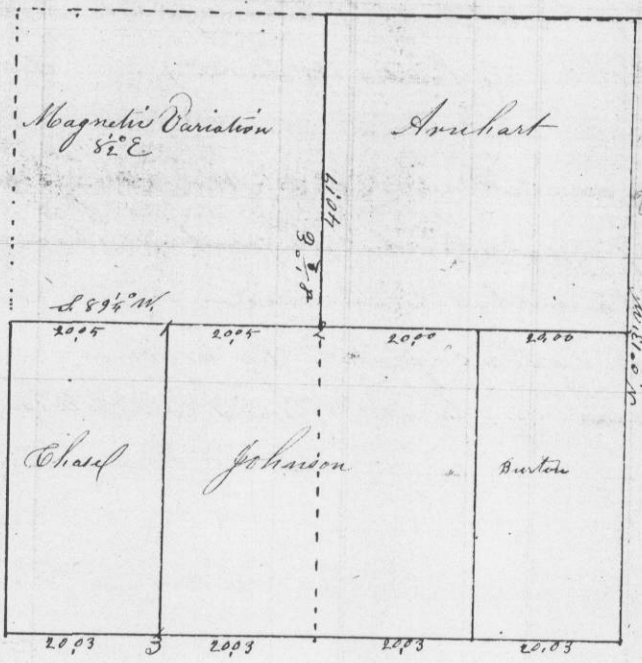


April 7th 1855

Survey for Chas. Arnhart - Johnson & Burton
Parts of Section 25 in township 5 North Range six West as shown
in the following plat to wit:

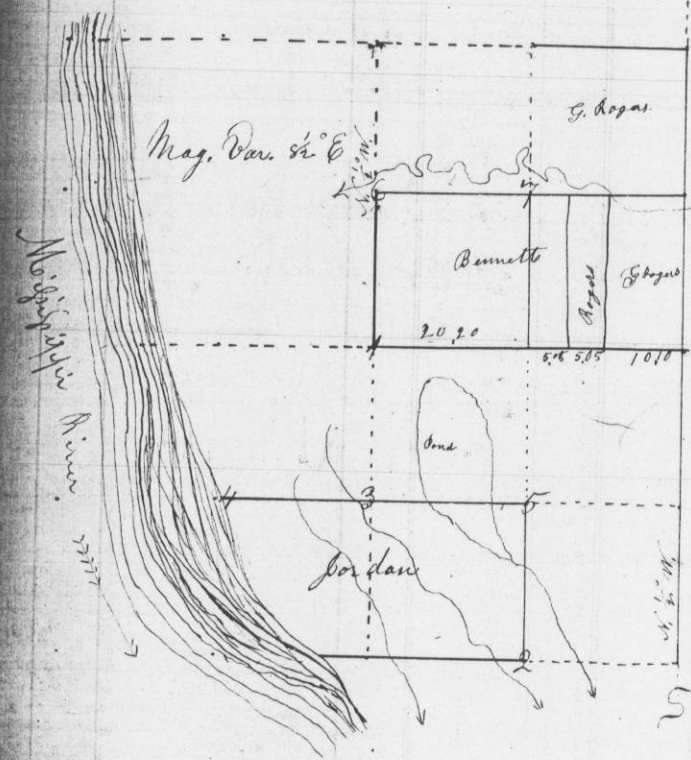
Sec. 25 - T. 5 N. R. 6 W.



- 1 1 N. 07 S. 7 1/2° E 28
- 2 2 N. 0 15 S. 88 1/2° W 114
So 15 S 88 1/2° E 61
- 3 3 S. 0. 20 S. 1° W 371

April 10th 1855

Survey for Bennett - Jordan & Rogers parts of section Eleven
in township three North range six West as shown in the following plat to wit:
Sec. 11 T. 3 N. R. 6 W



- Bearings of
- 1 Willow 12 S. 5 1/2° W 40
 - 2 Maple 10 corner
 - 3 Ash 8 S. 36 1/2° E 9
 - 4 Br. O. 6 corner
 - 5 Elm S. 35 1/2° W 112
 - 6 Log 6 corner
 - 7 Maple 20 corner

Overton County Surveyor.