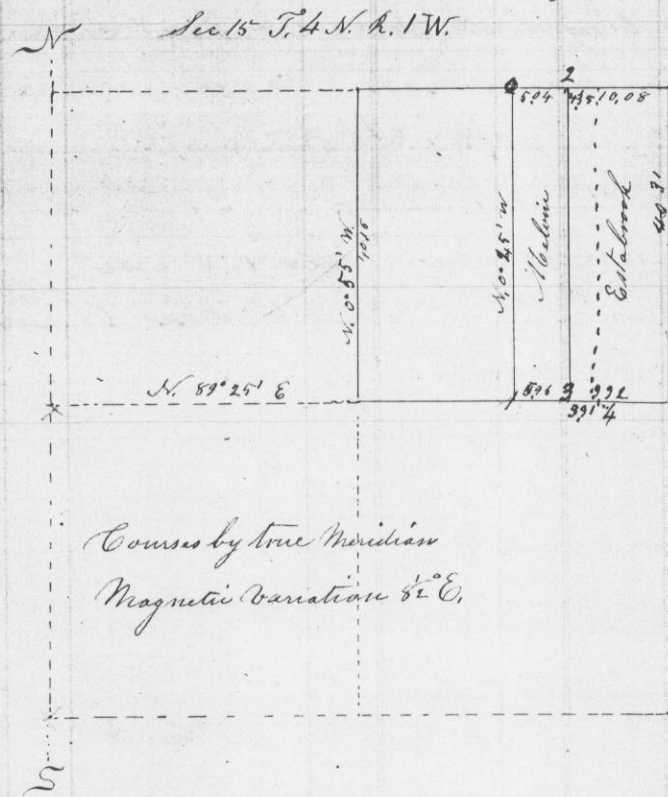


No. 787

March 30th 1855

Survey for Melvin & Estabrook parts of Section 15 - T. 4 N. R. 1 W. as shown in the following Plat to wit:



Courses by true Meridian
Magnetic Variation 5 1/2° E.

- Bearings
- 1 WO 15 N. 49 E 53
 - 2 Double bur oak 6 N. 92.56 (mark C)
 - 3 Hickory corner
 - 4 WO N 25 W 38

No. 788

April 2nd 1855

Survey for Mrs Carpenter and others to wit:
 Commence at the South East corner of Section 13 in Township 4 North range one West - Thence North 40,30 chains fell 44 links East of 1/4 section corner - corrected back - S. 0° 37' E. 20,15 ch' (Bearing Black Oak 6 inches in diameter North 5 1/2 links (4/8 sec. cor) - S. 0° 37' E 20,15 ch' - sec cor.
 Thence N. 89° 20' W. 20,00 ch' - N. 0° 37' W. 20,15 ch' & set post - Thence N. 0° 37' W. 20,15 ch' to post - Thence S. 89° 20' W. 20,00 ch' to 1/4 section corner -

Divided into two equal parts by a line running East & West. Courses by true Meridian Mag. Var. 5 1/2° E
 C. T. Overton Co. Sur