

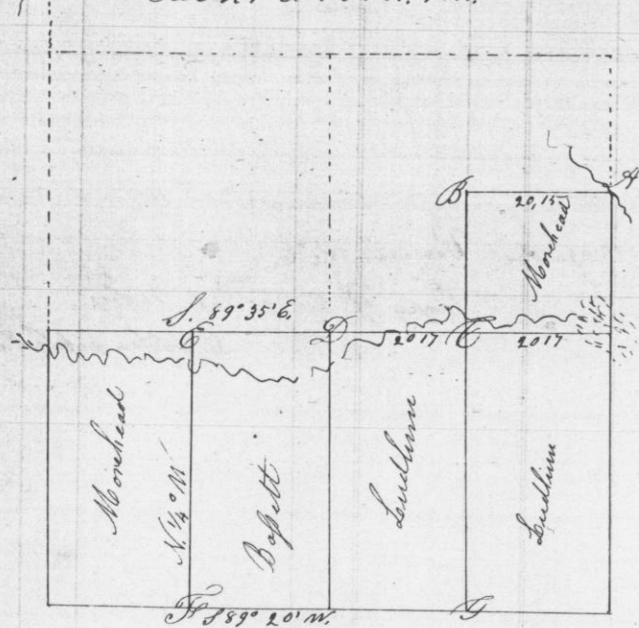
No. 771

Dec. 20th 1854

Survey for Henry Ludlum, Albert Bopette & Agents of Robert Morehead parts of section 21 Township 4 North Range One West as shown in the following plat and Notes to wit:

Sec 21 T. 4 N. R. 1 W.

Magnetic Variation 8 1/2° E.



Bearings

- 9 at D Br 0 12 S 84 1/2° W 29
- 12" E W. O. 7 N 88 1/2° E. 22
- 23" 8 W. O. 16 S 71 1/2° W. 29
- 18" B W. O. 10 S 63 1/2° W. 24
- 17" C W. O. 12 S 75° W. 19
- 20" G W. O. 14 S 12 1/2° E. 16
- 10 A corner in Stream

Overton Deputy County Surveyor

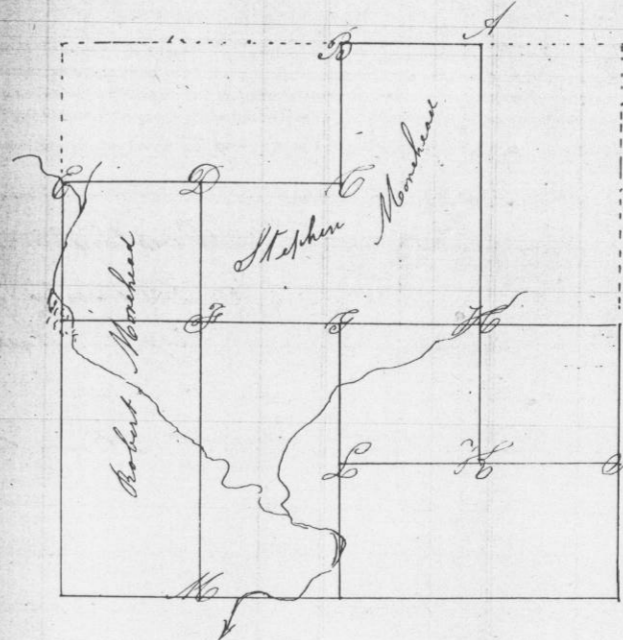
No. 772

Dec 21st 1854

Survey for Henry Ludlum Stephen Morehead - agents of Robert Morehead Sarah Morehead and Elijah Hooks parts of section 22 in township 4 N. R. One West as shown in the following Plat & Notes to wit

Sec 22 T. 4 N. R. 1 W.

Bearings



- 15 A - White Oak 3 N 52° W 2 1/2
- B Original corner
- 11 C W. O. 14 N 87 1/2° W 10
- 14 D W. O. 12 N 2 1/2° W
- 13 E corner in Stream
- 12 F W. O. 28 N 87 1/2° E 22
- 9 G W. O. 10 N 75° E 11
- 17 H W. O. 6 S 85 1/2° E 5
- 11 I see Survey No 688
- 22 K W. O. 12 S 45 1/2° E 6
- L
- 23 M S. Oak Elm 15 N 15 1/2° E 44

Overton Deputy County Surveyor