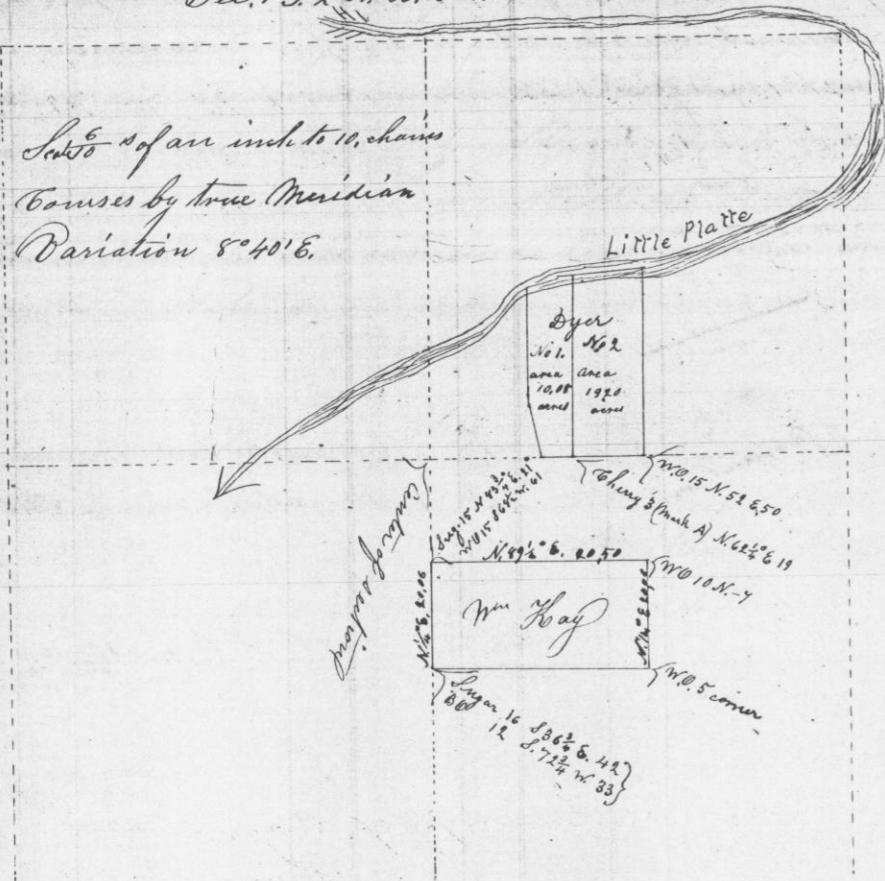


Feb 23<sup>rd</sup> 1854

Survey of lands of Samuel Dyer and William Ray  
Sec. 1 T. 2 N. R. 2 W.



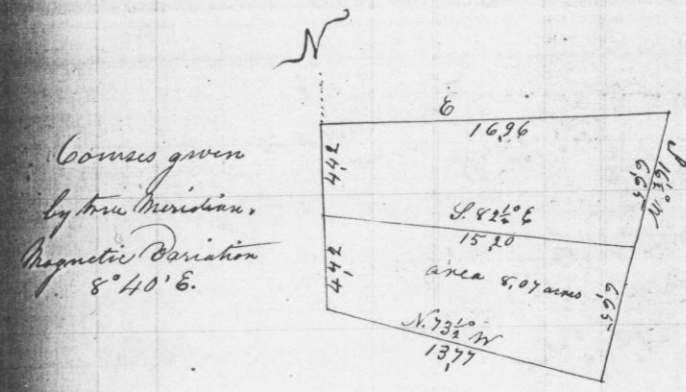
Notes to No. 1 - Commence 10,75 chains E. of center of section - Thence N. 15° W. 5,000  
 N. 21,39 ch to center of creek (100 lbs wide) N. 88° E. in center of creek 2,50 ch N. 84° E.  
 1,55 ch - S. 27,32 ch - S. 89 1/2° W. 2,53 ch to beginning area 10,88 acres  
 No 2 - Commence at 1/8 sec. cor. on S. side N.E. 1/4 Sec. 1. - S. 89 1/4° W. 6,92 ch  
 N. 27,32 ch to center of creek (100 lbs wide) N. 84 1/2° E. 7,05 ch in center of creek  
 S. 1/4 W. 27,88 to beginning Area 19,20 acres

C. J. Overton Deputy Co. Surveyor  
T. Co. Mo.

Feb 27<sup>th</sup> 1854

Surveyed for George Snowden & Barney McShane  
part of the South East quarter of section ten in  
township 3 North range 1 West 10th Merit.

Commence at the North West corner of said 1/4 section  
thence East 16,96 ch - Thence South 16 1/2 West 13,30 ch  
Thence North 73 1/2° W 13,77 ch - Thence North 884 to beginning  
- and subdivided as shown in the following plat -



Scale 1 1/2 inches to 10 chains

A true copy of Original Notes  
C. J. Overton Deputy Co. Surveyor