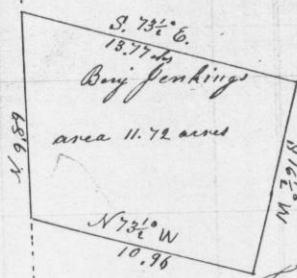


Feb. 1854

Surveyed for Benjamin Jenkins part of the S. E. 1/4 of section 10 in township 3 North Range one West to wit:
 Commence twenty one chains and sixty eight links North of the 1/4 section corner on the line between sections 10 & 15
 Thence North nine chains and eighty nine links. Thence South 73 1/2° East 13.77 chains - Thence South 16 1/2° West 9.48 chains - Thence North 73 1/2° East 10.96 links to beginning area 11 7/100 acres

Plat

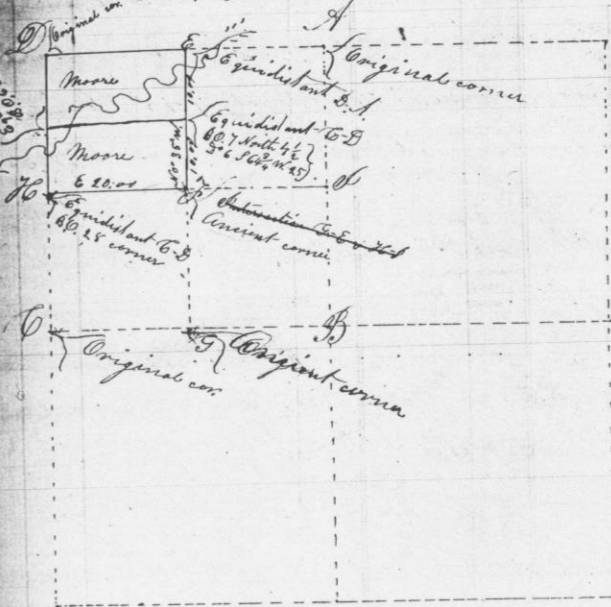


Courses by true Mer.
 Mag. Var. 8° 40' E.

C. J. Overton Deft. Co. Sur.
 of Ia. Wis.

Feb 15th 1854

Survey of Samuel Moores land being the N. W. 1/4 of the N. W. 1/4 of Section 23, Township 4 North Range 1 West in Grant County Wisconsin
 Sec. 23 T. 4 N. R. 1 W.



Courses by true Meridian
 Magnetic Variation 8° 40' E.

C. J. Overton Deputy Co.
 Surveyor of Ia. Wis.