

No. 745

State of Wisconsin
County of Grant Sp. Nov. 24th 1853

Survey for Bart. White the West half of the North East quarter of section two in township one North range two West to wit: 1st Established line from 1/4 section corner on East side to 1/4 section corner on West side of said section 2nd Established line between 1/4 section corner on South side & 1/4 section corner on North side of said section two. - at the intersection of those lines set a post for South West corner of said Whites land. Equidistant between said post & the 1/4 section corner on the East side of said section set a post for the South East corner of said Whites land. The North West corner of said land is the Original 1/4 section corner. - The North East corner of said land is equidistant between the last mentioned corner & the corner to sections one & two. All prairie

John T. Everett Co Surveyor G. Co. Wis.
by C. S. Overton Deputy

Did not stand

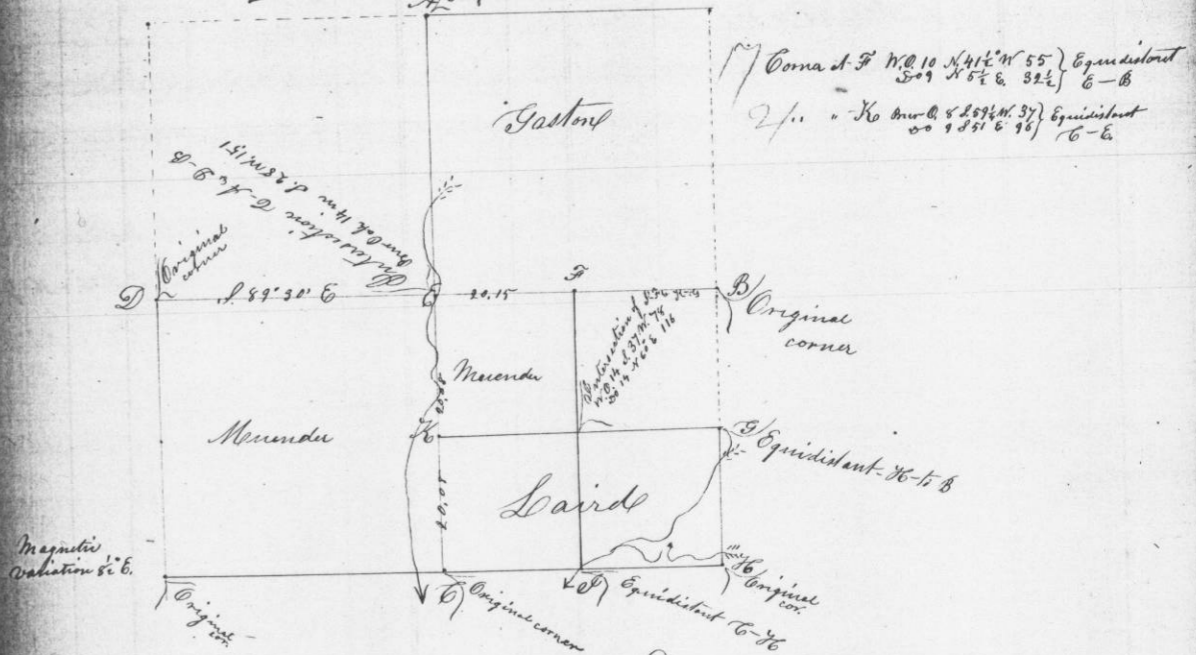
10-1-2

No. 746

Nov. 29th 1853

Survey for Thomas Laird Charles Mendenel & William R. Gaston the South half & the North West quarter of the South East quarter - The South West quarter & the North East quarter of section thirty four in Township six North range one West in Grant Co. Wisconsin as shown in the following plat & notes viz:

Sec 34 T. 6 N. R. 1 W
Original corner



John T. Everett Co Surveyor G. Co. Wis.
by C. S. Overton Deputy