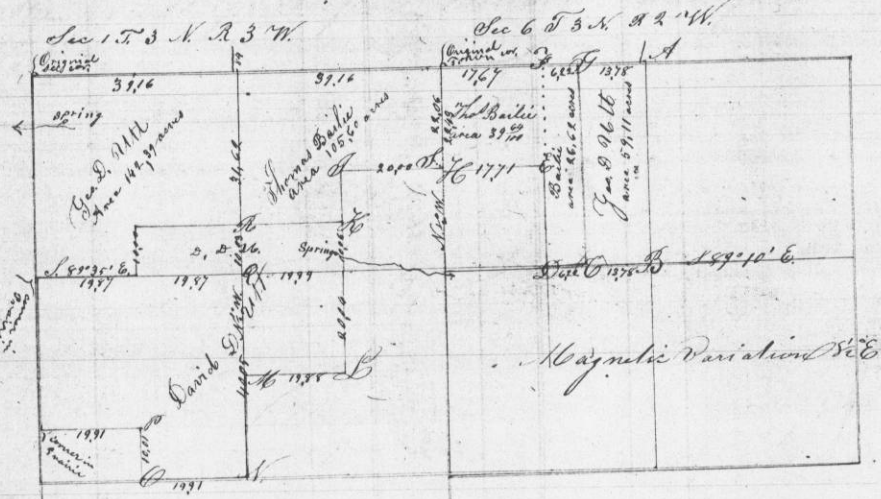


December 29<sup>th</sup> 1852  
 Surveyed for Thomas Bailey David D. Witt  
 and George D. Witt part of section 6 in Township  
 3 North range 2 West and part of section 1 in Township  
 3 North range 3 West in the county of Grant State of Wisconsin  
 as set forth in the following plat & notes viz:

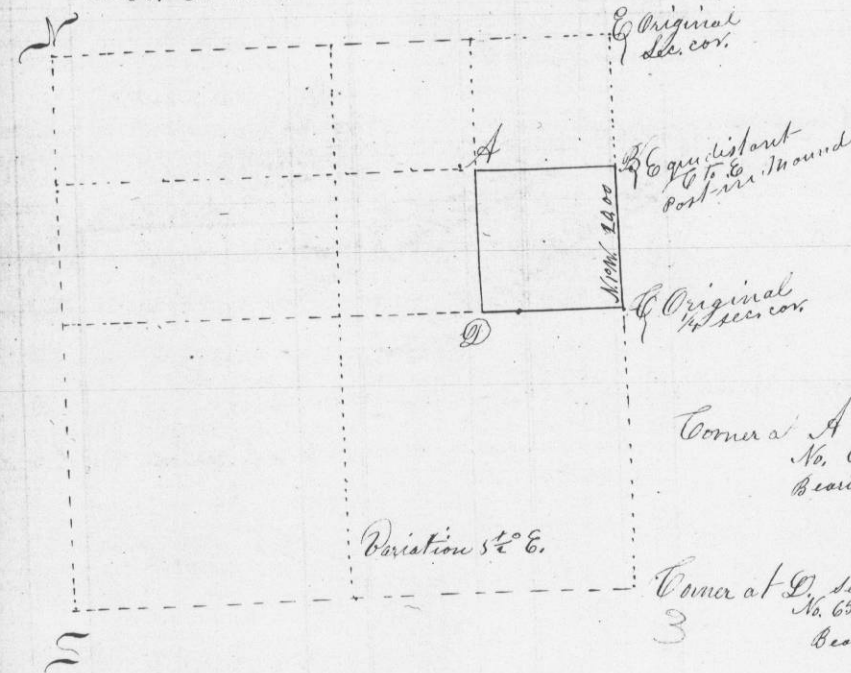


- Bearings
- A white Oak 25 in 529.6 20 links N 20 6 S 46 1/2 W 35 1/2
  - 5-6 20 18 S 29 1/2 W 46 1/2
  - 9-6 B W.O. 15 N 83 1/2 W 115 1/2 L W.O. 15 S 83 1/2 E 25 1/2
  - 22 S 21 1/2 E 40
  - C Black Oak 22 (mark B) N 69 1/2 W 51 1/2 N Walnut 4 S 46 1/2 W 29 1/2
  - W.O. 14 (mark O) N 102 E 55 (Aspen 4 S 24 1/2 E 14)
  - 12-6 D W.O. 15 S 61 1/2 W 49 1/2 N original 1/4 section corner
  - B.O. 22 N 56 1/2 E 45 1/2
  - 14-6 E W.O. 18 N 73 1/2 E 12 1/2 O Hickory 4 N 59 1/2 E 21
  - 20 10 S 52 1/2 W 46 1/2
  - 15-6 F W.O. 22 S 56 1/2 W 43 P B.O. 5 S 36 1/2 E 104 1/2
  - 20 6 N 26 1/2 W 130 1/2
  - G W.O. 10 (mark UTT) S 37 1/2 E 29 1/2 Q W.O. 15 S 46 1/2 W 46 1/2
  - 6 1/2 (mark TB) S 47 1/2 W 30 1/2 B.O. 6 W 27 1/2 E 17 1/2
  - 13-6 H B.O. 12 S 11 1/2 E 45 1/2 R B.O. 7 S 17 1/2 E 50
  - linking 4 S 75 W 7 1/2
  - 18-6 I Black Oak 20 S 77 1/2 E 43 1/2 S 20 6 S 58 1/2 W 61 1/2
  - B.O. 8 N 22 1/2 W 59 1/2

A true copy and correct ~~and~~ plat of  
 original survey  
 John T. Overton Co surveyor  
 By C. J. Overton Deputy

Feb 25<sup>th</sup> 1853

Surveyed for Christopher Bell the South East quarter  
 of the North East quarter of sec thirty in Township three  
 North range one West of the fourth principal Meridian  
 in the county of Grant State of Wisconsin as set  
 forth in the following plat & notes viz:  
 Sec 30 T. 3. N. R. 1 West



Corner A set by survey  
 No. 657  
 Bearings { White Oak 4 1/2 36 W 8  
 Black Oak 55 68 1/2 29

Corner at D set by survey  
 No. 657  
 Bearings { White Oak 5 28 1/2 W 27  
 Do Do 10 29 1/2 E 94

I certify the above to be a true copy of Original notes  
 of survey made by me as therein set forth  
 John T. Overton Co Sur.  
 By C. J. Overton Deputy