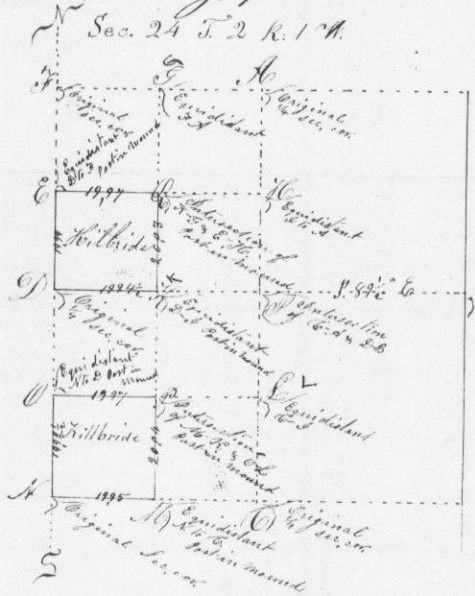


No. 712

Oct. 13<sup>th</sup> 1852

Surveyed for Michael Hilbride the South West 1/4 of the North West quarter and the South West quarter of the South West quarter of section twenty four in township two north range one West in the county of Grant State of Wisconsin as set forth in the following plat viz:



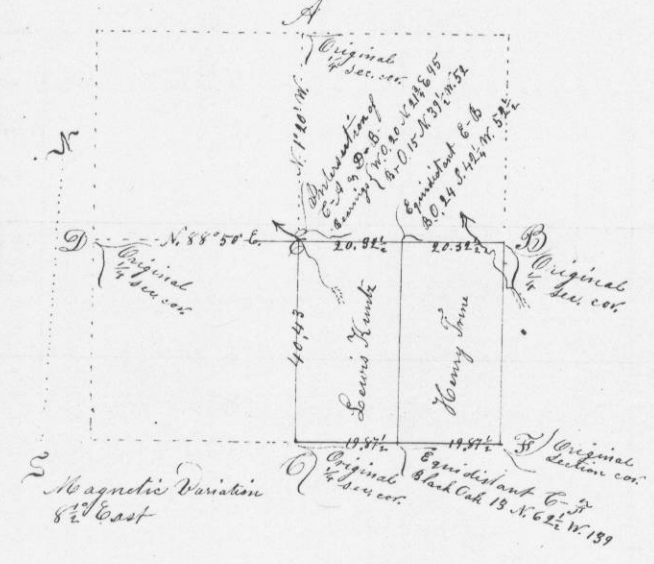
Magnetic variation 8 1/2 E

Note at the points M, O, C, Q & R some pieces of broken earth are buried 6 inches below the surface and at the points P a log pipe is buried 6 inches below the surface

A true copy of Original Notes  
John J. Everett Co. Surveyor Grant Co. Wis.  
By C. J. Overton

No. 713

State of Wisconsin Grant County Oct 20<sup>th</sup> 1852  
Surveyed for Henry Trine & Lewis Huntz the East half and the West half of the South East quarter of section 26 Township 5 North Range 6 West of the 4<sup>th</sup> principal Meridian as represented in the following plat & Notes to wit  
Sec. 26 T. 5 N. R. 6 W.



A true copy of the Original Notes  
John J. Everett County Surveyors  
G. Co. Wis.

By C. J. Overton Deputy