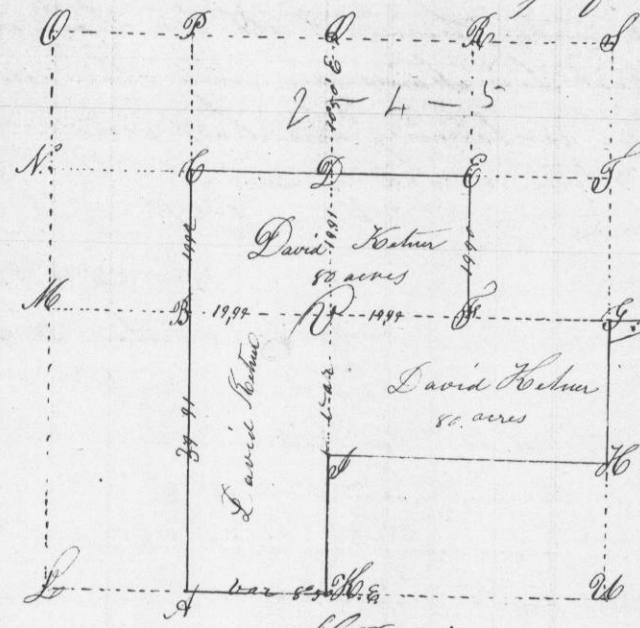


No. 681

Surveyed June 17th & 18th 1851 for David Ketchum the South West quarter of the North East quarter the South East quarter of the North West quarter the North half of the South East quarter the East half of the South West quarter of section two and part of the South West quarter of section one in Township No four North North range five West of fourth principal meridian in the County of Grant - State of Wisconsin



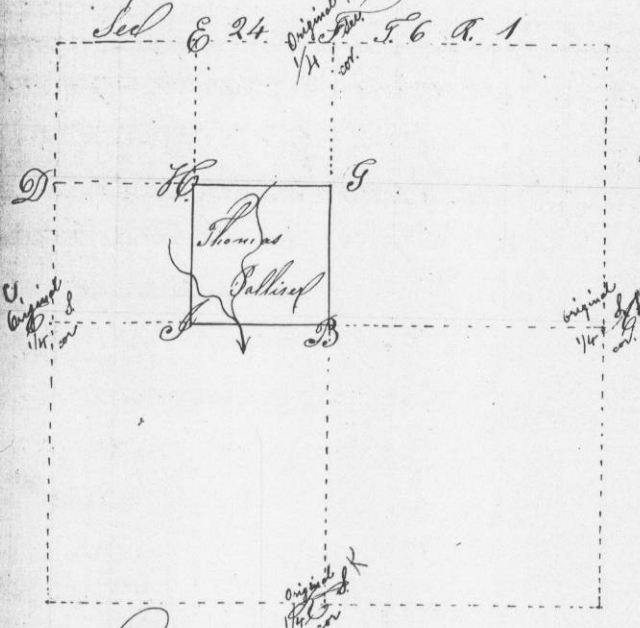
All Prairie Variation 8 1/2 E.

Corner A. (1/4) Equidistant from K to L
B. Equidistant from P to M.
Crossing of B to P & D to M.
D. Equidistant from P to Q - 253 1/2
Crossing of P to K & P to D
E. Equidistant from G to D
G. (1/4) Original Post in Mound.
H. (1/4) Equidistant from U to F.
I. (1/4) Equidistant from K to W
K. (1/4) Original Post in Mound
U. Crossing of D to Q & G to M.
Also commence at the NW section corner between sections one and two. Thence South 5.43 chains
Thence N. 70° 20' E. 10.26 1/2 chains
Thence N. 28° 20' W. 2.50 1/2 chains
Thence West 8.61 1/2 chains to beginning containing 3.69 acres.

I certify the above to be a true record of survey as therein set forth
John J. Everett
By C. C. Overton Deputy

No. 682

Surveyed for Thomas Pallas September 24th 1851 the South East quarter of the North West quarter of Section twenty four in Township six North Range one West of the fourth principal meridian in the County of Grant and State of Wisconsin as set forth in the following plat & Notes



Variation 8 1/2 E.

Corner at B - intersection of A - C & H - I
Bearings at B. W. O. 3. N. 82° W. 24
W. O. 4. S. 29 1/2° E. 63
Corner at I. equidistant from B to C.
Bearings at I. W. O. 8. N. 52 1/2° W. 102 1/2
C. O. 12. S. 46 1/2° W. 113
Corner at H. intersection of G - D & I - E
Bearings at H. W. O. 6. N. 86° E. 70
C. O. 1. S. 34° E. 28
Corner at G. - equidistant from B to F
Bearings at G. C. O. 10. S. 67 1/2° W. 97 1/2
Double C. O. 6. N. 56° W. 92 1/2

I certify the foregoing to be a true record of survey as therein set forth
John J. Everett County Surveyor - Grant Co Wis
By C. C. Overton Deputy