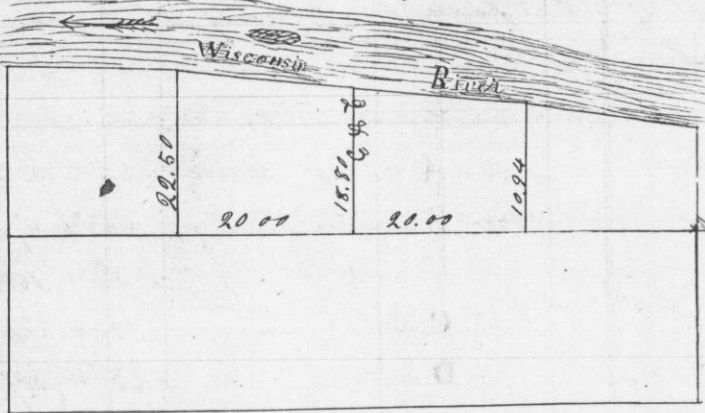


No 676

Survey made for Olin & More in Section one of Town eight North range one West of the fourth principal Meridian it being fractional lots No 2 & 3 this

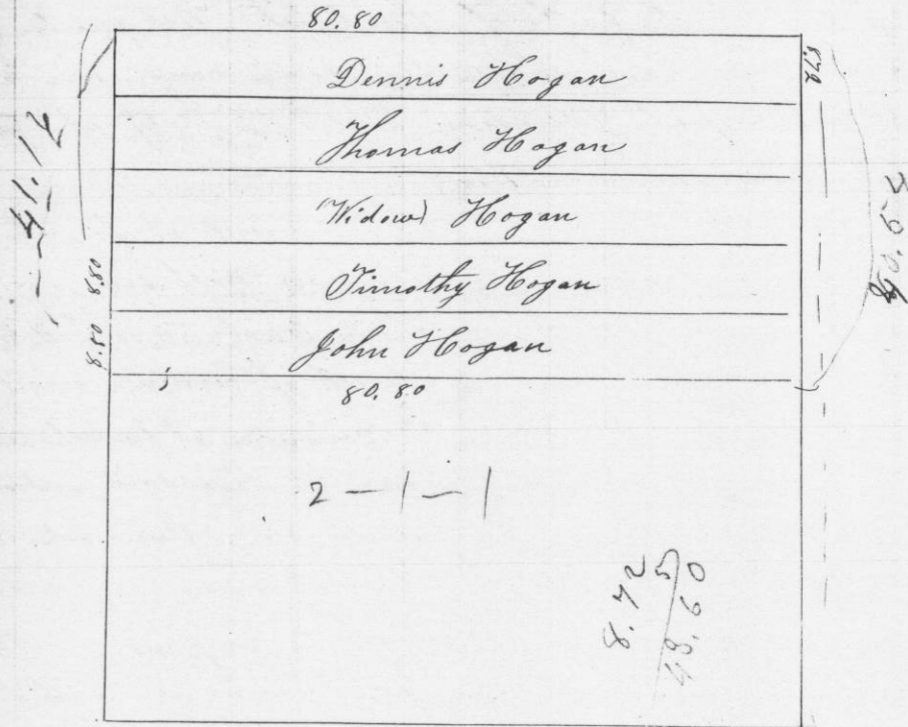


The above survey was made by running through the section 20 chains North of South by of Section making a legal survey as the law directs - April 16<sup>th</sup> 1851

John T. Everett County Surveyor  
Grant County

No 677

Survey made for Hogans in section 2 of Town 1 North range 1 West of the principal Meridian



The above survey was made by running through the center from East to west and dividing the North half of section two in five Equal parts containing 70.75 hundredths acres

April 26<sup>th</sup> 1851 John T. Everett County Surveyor  
Grant County Wis

8.80  
44  
808

70.75  
135.90  
22.20  
22.20  
22.20  
22.20  
88.00  
808

44.00  
22.20  
22.20  
22.20  
22.20  
88.00  
808

8.42  
48.60