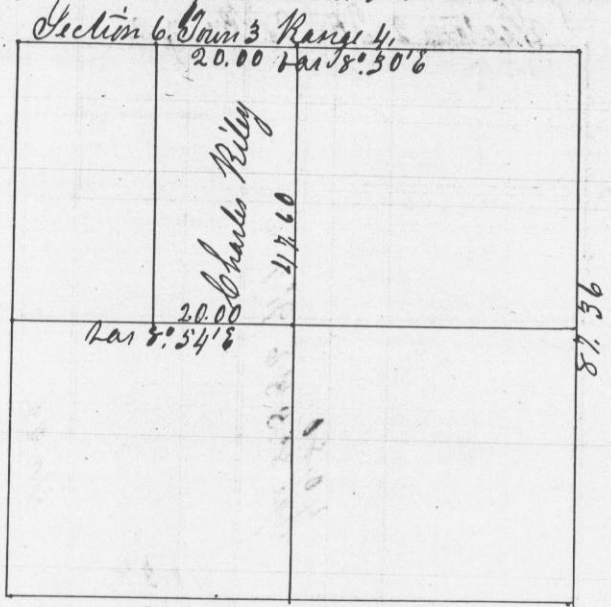


No 668

Survey made for Riley & Brady of the E 1/4 of N. W. 14 of Section 6 Town 3 Range 4. 8<sup>th</sup> to 10<sup>th</sup> of March 1851.

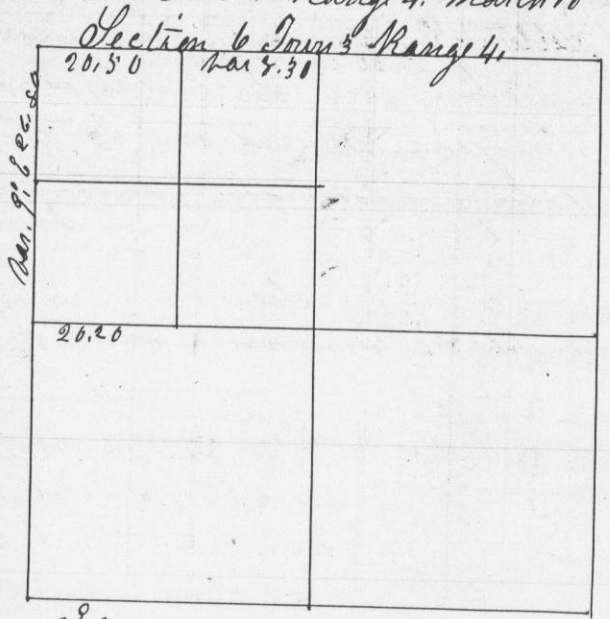


- 9 1/4 P at center Bearings } N. 0 30 N 26 E 2.94  
  } N. 0. 8 N 35 W 1.38
- 5 1/4 P on N Side Bearings } N. 0. 24 S. 38 E. 6.173  
  } B. 0 140 P 20 W. 3.29
- 10 1/8 P. E of N W corner Bearings } N. 0 8 S 43 E 56  
  } Do 10 S. 55 W. 95
- 12 1/8 P. W of center Bearings } N. 0 20 N 40 E 37  
  } Do 30 N 70 W 97

A true plot & record of survey made March 8<sup>th</sup> 10<sup>th</sup> 1851.  
 J. I. Everett County Surveyor.  
 By J. G. Clark Deputy County Surveyor.

No 669

Survey made for Jonathan Peir of the N. W. 14 of N. W. 14 of Section 6 Town 3 Range 4. March 10<sup>th</sup> 1851.



- 18 P. W of N W corner Bearings } N. 0 8 S 43 E 56  
  } Do 10 S. 55 W. 95
- 10 1/8 P. E of N W corner Bearings } N. 0 8 S 43 E 56  
  } Do 10 S. 55 W. 95
- } N. W corner Original Bearings
- 14 1/16 P center of N W 1/4 Bearings } Box & Olden 5 N 9 W 2.70  
  } Do 7 N 13 E 3.28
- 13 1/16 P. S of N W corner Bearings } N. 0. 12 S 18 E 30  
  } Do 12 N 10 1/2 W 31

A true plot & record of said survey  
 J. I. Everett County Surveyor.  
 By J. G. Clark Deputy County Surveyor.