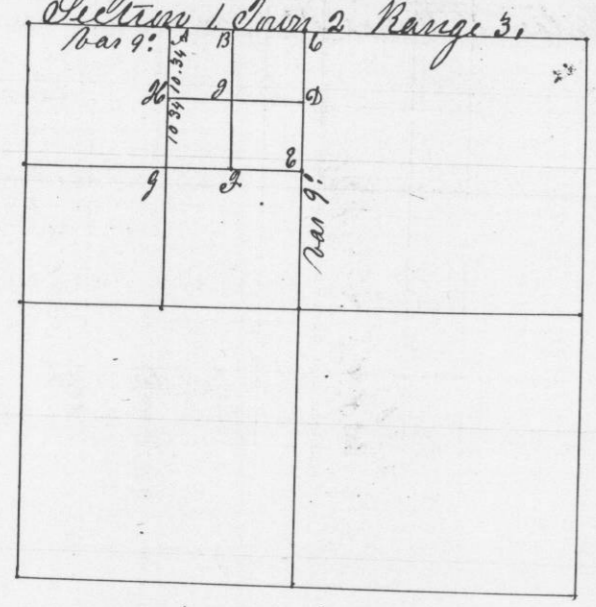


Survey made for Owen Mc Laughlin of N. E 1/4 of Sec. 1 Twp. 2 Range 3 in ten acre lots Dec 5th 1850



1/8 Post N. of center Bearings
 of section of section
 1/4 Post in center Bearings

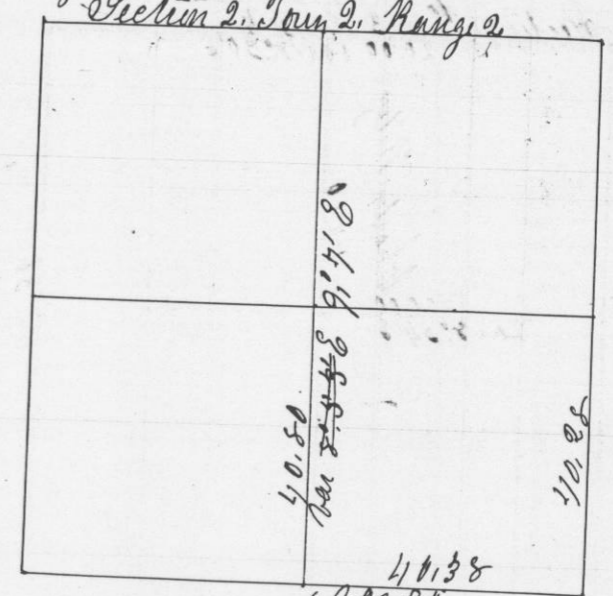
Beginning at N.W. corner of section 1 Bar 9° E. Thence E 40.04 chains intersected at 1/4 Post. Thence South Bar 7° E 41.10 intersected 1.34 West of center.

Post at H. Bearing N. 0. 14 S 88 E 22 links
 Post at F Bearing N. 0. 15 S 19 E 53 links
 " " D Bearing N. 0. 8 N 69 E 41 links
 " " I " " N. 0. 14 N 73 E 90 links
 " " B " " N. 0. 18 N 17 W 58 links

A true plot and record of survey.

Geo. R. Stutz
County Surveyor

Survey made for Goodhall and others in Section 2 Twp. 2 Range 3 December 18th 1850



1/4 Post center Bearings
 Thence South Bar 9° E at 110.50 intersected 17 links W of 1/4 Post
 Thence E. Bar 9° E at 40.38 intersected at section corner
 Thence N. Bar 9° at 41.28 intersected at 1/4 Sec corner
 Thence W to 1/8 Post
 Thence S to 1/8 Post W of S. E corner

A true plot & record of survey.

Geo. R. Stutz
County Surveyor