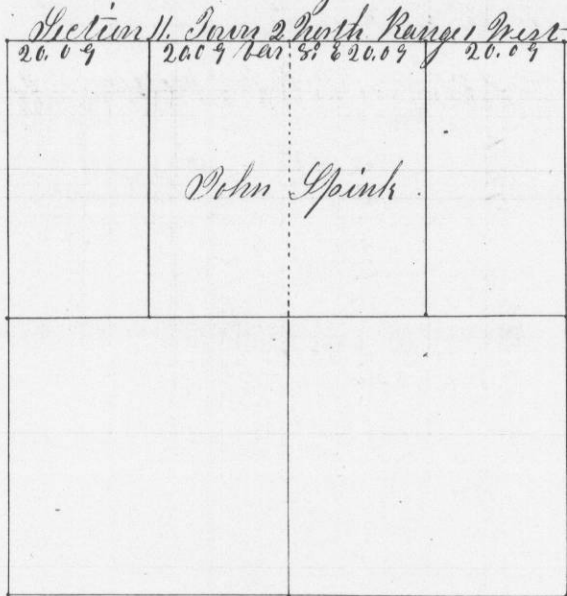


Survey made for John Spink of the W 1/4 of N. E 1/4 & E 1/4 of N. W. 1/4 of Section 11. Town 2. Range 1. Nov 21. 1850

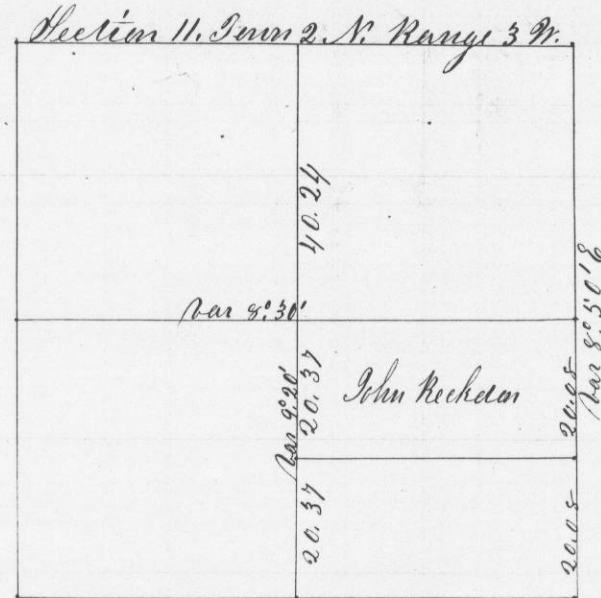


Beginning at N. W. corner of Section variation 8:50' E thence East at 80.35 intersected section line 68 links North of Section corner, corrected Back Bar 8: E 20.09 & set 1/8 Post.

A true plot and record of Survey.

Geo. R. Steutz
County Surveyor

Survey made for John ^{Reckdon} of the N. W. of S. E 1/4 of Sec 11 T. 2 N. Range 3 W. Nov 23rd 1850



Beginning at 1/4 post on E side of Section. Thence South Bar 9: E 40.16 chains intersected 24 links W of Section corner. corrected back 20.08 & set 1/16 post. Bearings: Br. C. 12 S 50 E 88
W. C. 18 N 49 E 172 19

Thence West from 1/4 post on E side Bar 8: 45' E intersected 35 links South.

Then North through center Bar 9: 20' E, at 40.57 intersected East West line through center, at 80.98 ch Intersected at 1/4 Post correct Back & set 1/4 Post { W. C. 14 S 6 W 82 9
W. C. 15 N 39 E 100

Thence South 20.37 & set 1/16 P { W. C. 15 S 6 W 193 21
Thence East to 1/16 Post

A true plot and record of Survey

Geo. R. Steutz
County Surveyor