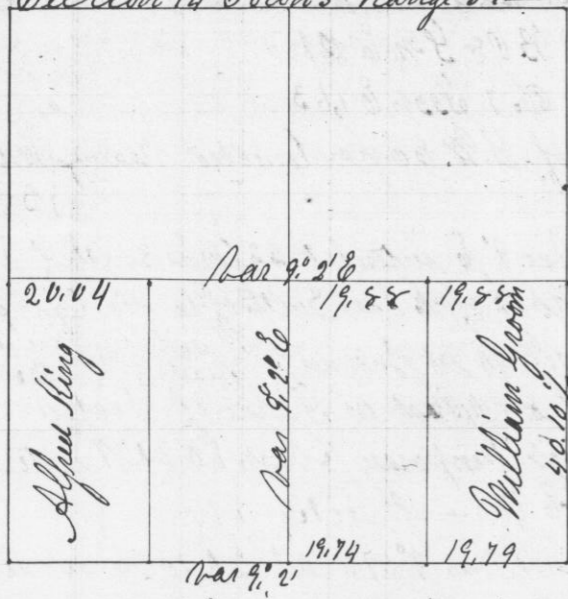


Survey made April 19<sup>th</sup> 1851 in Section 14 Town 3 Range 5. The E 1/2 of S. E. 1/4 for William Groom & the W 1/2 of the S. W. 1/4 for Alfred King.

Section 14 Town 3 Range 5.



Beginning at 1/4 Post on W side of Section Bar 9:20E. Thence East through Center, at 20.00 Ch set temporary 1/2 Post, at 40.00 Ch set temporary Center Post, at 60.00 Ch set temporary 1/2 Post, at 79.68 chains intersect 37-links north of 1/4 Post. Of the original Bearings the Oak is standing but the hickory is fallen and is S. 6° W instead of 61° West as reported in the field notes.

Then from 1/4 Post on N Side to 1/4 Post on S. Side Bar 9:2'E intersect West of temporary Center Post 9 links & 1 link West of 1/4 Post on South Side.

Then from 1/2 Post W of S. E. Corner as previously established North to 1/2 Post established in mound 19.58 chains East of Center 1/4 Post East Side of Section original Bearings { Br 0 7 S 75 1/2 E 1016  
Hickory 10 S 6 W 1635

1/2 Post East of Center in mound 1/2 Post W of S. E. corner as established by some other Surveyor. Bearings { Br 0 24 N 44 1/2 E 1.03  
Do 24 S 56 W 1.35

Corner of 13, 14, 23 & 24. original Bearings destroyed { Br 0 8 S 59 E 241  
Br 0 7 S 49 3/4 W 524

Said corner was established in the following manner Beginning at 1/4 Post on S. Side thence East Bar 9° 2 East

{ William Groom & Alfred King chainmen were duly sworn }  
at 19.74 chains intersect at 1/2 Post, at 40.00 chains set temporary Post  
Then from N. E. Corner of said Section South Bar 9:2'E at 40.09 Ch intersect 10 links East of Post, from said 1/4 Post South same Bar 40.10 1/2 intersect 1/2 links West of temporary Post,  
Then from Corner of 23, 24, 25 & 26 North Bar 9:2', at 40.23 1/2 Ch intersect at 1/4 Post then from 1/4 Post same direction at 40.23 1/2 Ch intersect 35-links W of first Post, corner established at first intersection.

Then from 1/4 Post on South side of Section W. Bar 9:2'E at 20.00 Ch set temporary 1/2 Post at 40.19 Ch intersect 4 links north of Post at Corner of 14, 15, 22 & 23. Correct Back 20.09 1/2 and established 1/2 Post Bearings

23 Bearings { Br 0 14 N 60 W 169  
W. 0 10 N 20 1/4 E 55

Thence N to 1/2 Post, corrected & set in mound

A true plat & record of Survey  
Attest I John E. Everett County Surveyor -

By J. G. Clark Deputy County Surveyor

