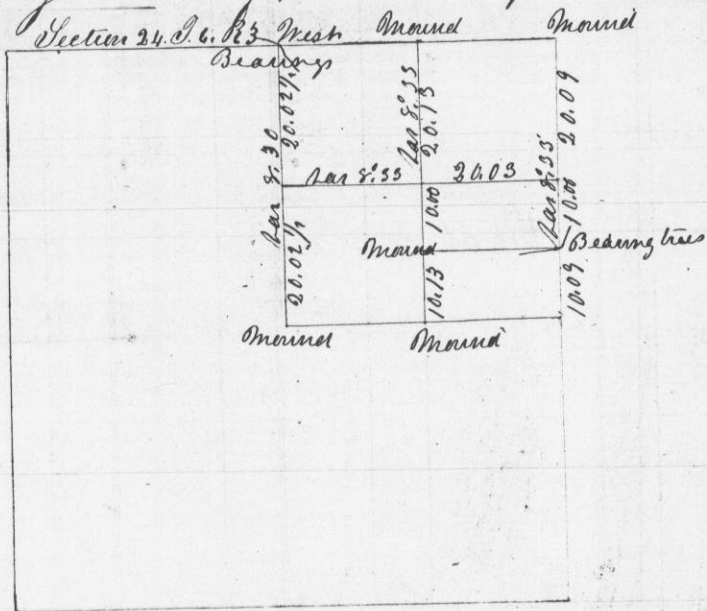


Survey made for Michael Woodward in N.E. 1/4 of Section 24 of Town 6 Range 3 West of 4th P.M. April 10th 1851



Beginning at N.E. corner Bar 8:20 & Thence South 20.00 chains set temporary Post. at 30.00 set another temporary Post. at 40.18 intersect 16 links West of 1/4 Post.

Then North from 1/4 Post previously established through the center of said 1/4 Section. at 10.00 chains set temporary Post. at 20.00 chains set a temporary Post. at 40.26 intersect at 1/4 Post previously established in mound. Variation 8:33 East

Then from 1/4 Post at N.W. corner of said 1/4 Section Bar 8:33 & South 40.05 chains intersect 5 links West of Center Post. correct back 20.02 1/2 chains set 1/6 Post. Thence East across center of said 1/4 Section. Variation 8:33 E. intersect North of Temporary center of said 1/4 section & at 20.03 chains from the center of said 1/4 Section intersect at 1/6 Post on East side of said Section after the same had been corrected

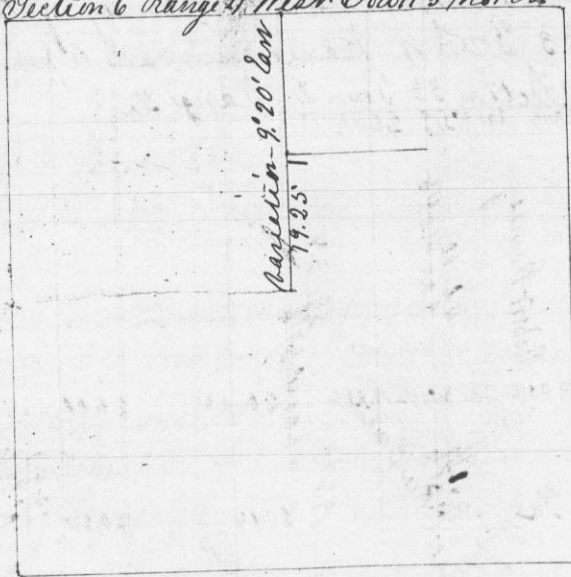
Then corrected and established 1/32 Post 10.00 chains South of last mentioned 1/6 Post. Bearings { Bar 8:21 & N 25 1/2 E 2.13
Bar 8:21 & S 82 1/2 W 2.83

Then corrected and established in mound 1/32 Post 10 chains south of the center of said 1/4 Section. cutting of 20 acres from the north side of the S.E. 1/4 of said 1/4 Section.

A true plot & record of survey John C. Orrett County Sur. By John G. Clark Deputy

Survey made for Mr Donald in section 6 Range 4 Town 3 North April 7th 1851

Section 6 Range 4 West Town 3 North



Beginning at Center Post previously established, thence North 19.25 chains set temporary ^{Witness} Post, thence North intersecting Town Line 4 links East of 1/4 Post. correct Back and established said Witness Post on the banks of a Stream called Rattlesnake

Bearings { Black Walnut 10 S 21 E 2.85
Red Elm 16 S 35 1/2 W 3.21, Corrected Variation - 9:20 East

A true plot and record of survey

John C. Orrett
County Surveyor
By John G. Clark
Deputy

Incomplete