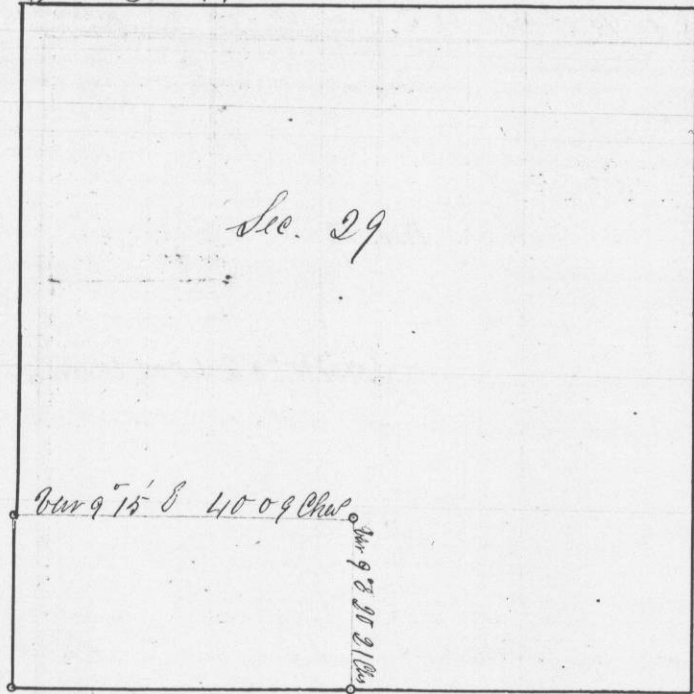


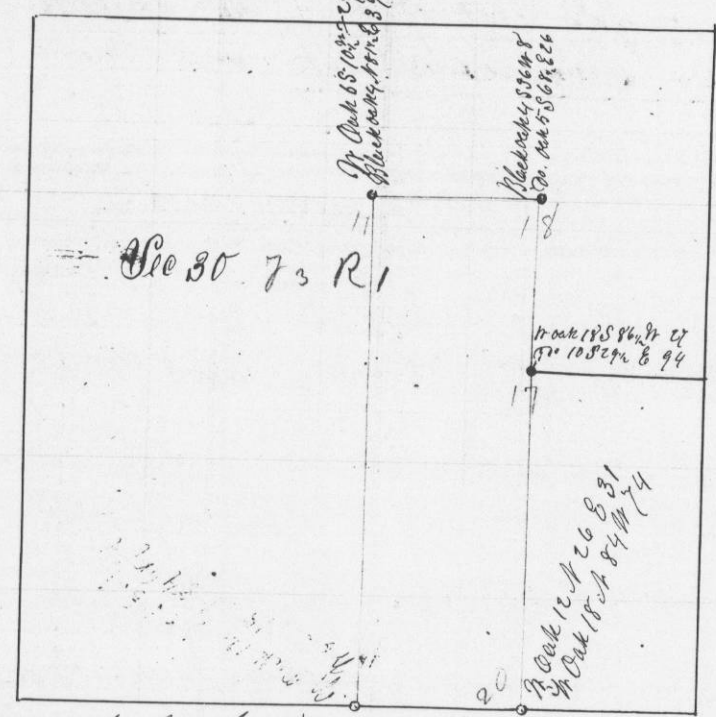
Survey made for Oscar Hentshomb this 7th day of March 1851
in Section 29 Township No 3 North of Range No 1 West 4th mer
of 1/2 S W 1/4 of S 3 N R 1 W 4th mer



Beginning at W Section Corner on South side of Section
Thence North Variation 10° East 80.84 Chains intersected 141 East of W Section
Corner Thence West from W Section Corner on East side of Section
Variation 9° 15' East 80.18 intersected 38 links South of W Sec Corner since
Connected back on both lines as the Law directs Thence made an
equal division of South West off in two Equal Parts Surveying
East & West Bearings to N E Corner

White Oak 128° 51' 8 76 links
21 Bar Oak 9 N 41 W 79 links
A True Plat and Record of Survey
Attest John J. Everett
County Surveyor

Survey made for Joseph Dixon N W 1/4 of N 34
of also West half of South East 1/2 of Section 30 Township
Three North Range No. 1 West 4th principal Meridian
this 8th day of March 1851



Beginning at W Section Corner on South side of Section 30
Thence North Variation 9° East 80.20 Chains intersected 172 links East
of W Section Corner on North side of Section
Thence West from W Section Corner on East side of Section
Variation 9 East 78.90 intersected 30 links North of Corner and Cor-
rected back as the Law directs and Established three Corners
and took Bearings as described on Plat

A True Plat and Record of Survey
John J. Everett
County Surveyor

PAGE 257 IS MISSING