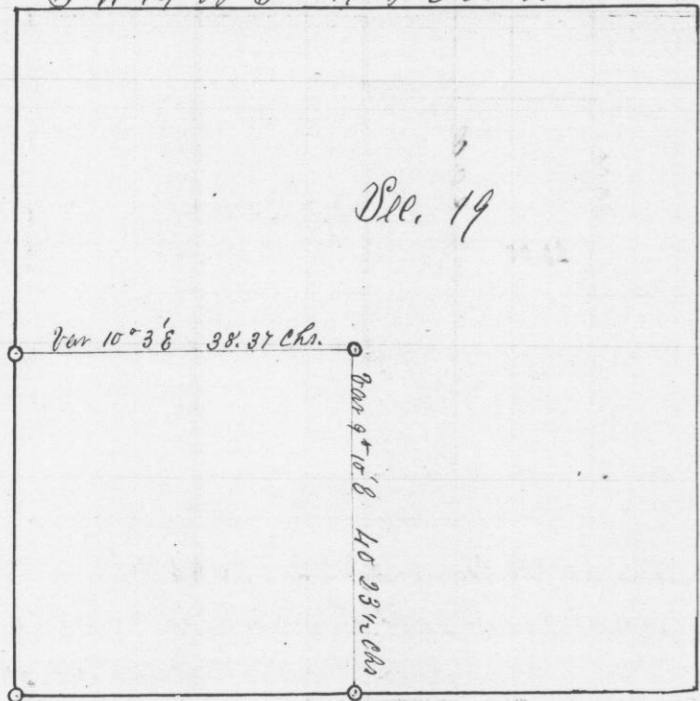


No 654

Survey made for Patrick M. Coven in Section nine
Ten (19) in Township No Three North Range No one west
4th Principal Meridian March 10th 1851
S. 1/4 of Sec. 19 T. 3 N. R. 1 W. 4th Mer.



Beginning at Gr Section Corner on East side of Section
Thence West Variation 9° 45' East, at 78.37 Chains intersected
43 Links North of Section Corner.

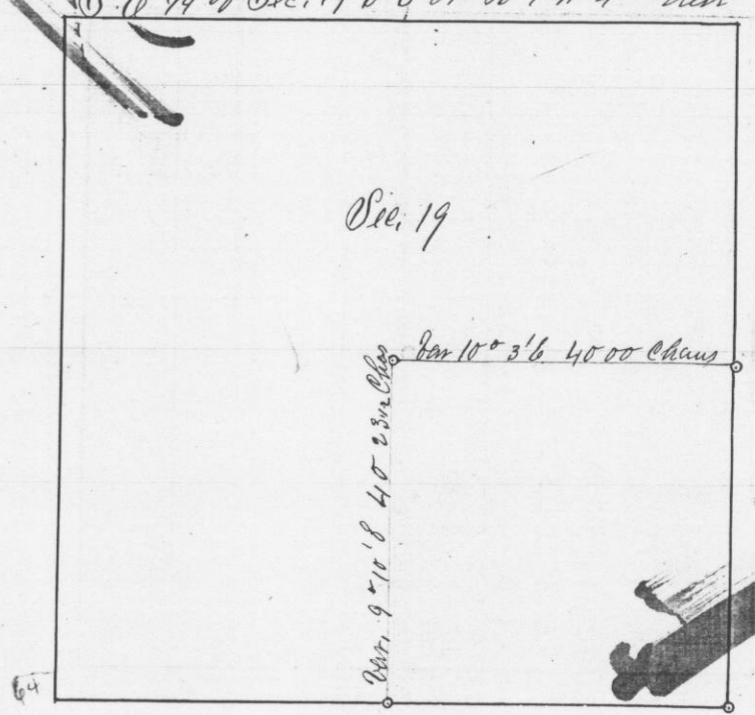
Thence North from Gr Sec. Corner on South side of Section
at Variation 10° East 80.47 Chains intersected 120 Links West of
Gr Section post Connected back and Established Centre according
to Law and built a mound of Rock

I hereby certify that the above is a true, plain and
Correct Record of Said Survey made by me this 10th day
of March 1851

John J. Everett
County Surveyor

No 655

Survey made for Ferdinand Skuta in Section nine
Ten (19) of Town No Three North of Range No one West of the
4th Principal Meridian March 10th 1851
S. 1/4 of Sec. 19 T. 3 N. R. 1 W. 4th Mer.



Beginning at the Gr Section Corner on East side of Section
Thence West Variation 9° 45' East at 78.37 Chains intersected 43 Links
North of Gr Section Corner

Thence North from Gr Section Corner on South side of Section
Variation 10° East, 80.47 Chains intersected 120 Links West of Gr
Section Corner and Connected back as the Law directs and Estab-
lished a Corner in Centre of Section by Erecting a Mound of Rock

A true Record of Survey
Attest John J. Everett
County Surveyor

Established Gr Section Corner on West side of Section by
running from N. W. to N. W. Corner and dividing the distance
and took bearings N Oak 12 S 19° N 48 Links
Blue 12 N 59° N 56 Links

John J. Everett
County Surveyor