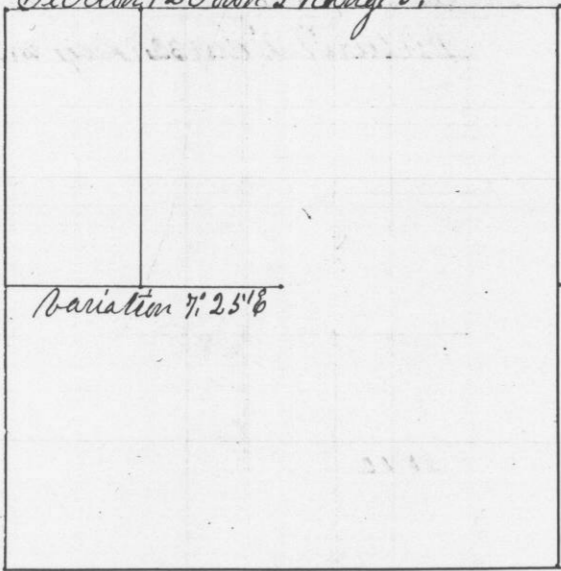


No 652

Survey made for Harvey Jones in Section 12. Town 3 Range 2
Aug 23 1850



West from center bearing 7:25' E intersected at Post. correct Backs
and set 1/4 Post. W 0.18 S 65 1/2 W 67 1/2 links

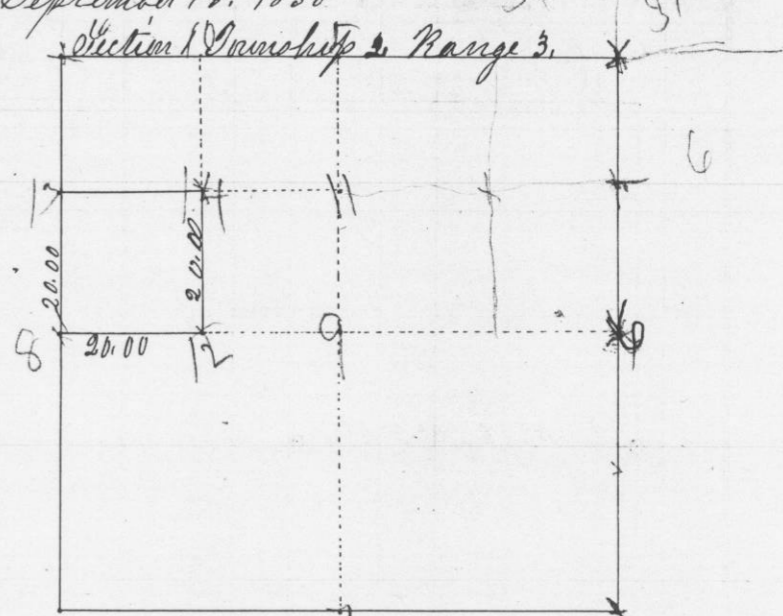
Do 12 S 24 1/2 E 164 "

Thence through center of N.W. 1/4
A true plat and record of survey.

Geo R. Huntz
County Surveyor

No. 653

Survey made for John Holmire & Henry Braden of S.W. 1/4 of N.W. 1/4 of Sect
Town 2 Range 3 September 14th 1850



Beginning at the corner of 1, 2, 3 S & 36. Thence South 40.00 ch to
1/4 Post. Corrected Back 20.00 ch & set 1/4 Post. Br. 0.9 S 12 E 63.

13 B. 0.5 N 17 E 51

Thence East to 1/16 Post. Bearings W. 0.12 S 78 E 26 links

14 Do 20.54 W 42 links

Thence South 20.00 ch to 1/2 Post Bearings W. 0.14 S 35 E 70

Thence West 20.00 set 1/4 Post on section line W. 0.14 S 77 W 111 links

A true plat and record of survey

Geo R. Huntz
County Surveyor