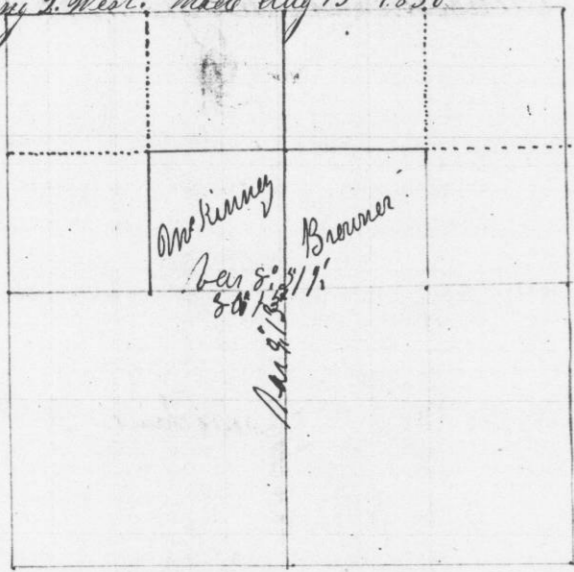


Survey made for Sylvester Brauner and Charles McKinney.
The S. E. 1/4 of N. W. 1/4 for McKinney. & S. W. 1/4 of N. E. 1/4 for Brauner. in Section
29. Town 3. Range 2. West. Made Aug 13th 1850.



Beginning at 1/4 Post on the East side of Section Thence West
Variation 9° E. at 80.15 intersected 20 South.

North through center. bar 9. intersected. 30 East of 1/4 Post.
connected back and set 1/6 Post Bearings

W. C. 16 N 85° E 99 links.
W. C. 14 N 73° W 102 links.

1/4 Post. at center of Section. Bearings

W. Elm 9 S 15° E 236 links.
W. Elm 10 S 20° W 347 links.

1/8 East of center Bearings

Sugar 12 N. 35° E 32 links.
W. C. 14 N 21° W 92 links.

1/16 Center of N. E. 1/4 Bearings

R. C. 10 N. 12 1/2° W 280 links

1/8 West of center Bearings

R. Elm 8 N. 42° W 18 links
W. Elm 8 S 43° E 14 links

1/16 Center of N. W. 1/4 Bearings

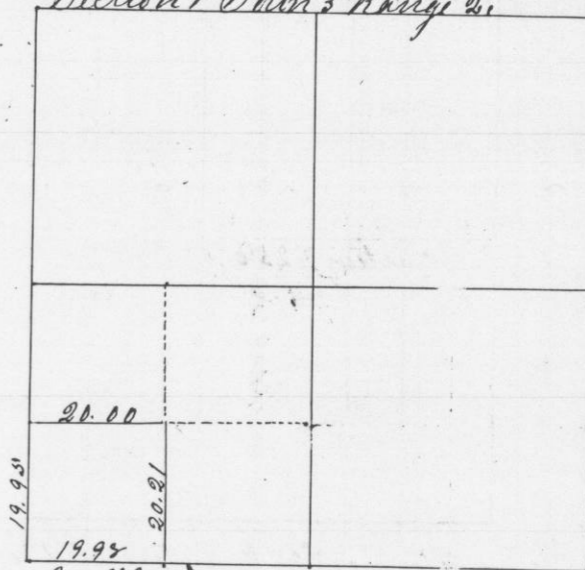
Br. C. 10 S 5° N 96 links
Br. C. 11 N. 40° W 89 links

A true plot & record of survey

Geo R. Steuts
County Surveyor

Survey made for Henry Jones of the S. W. 1/4 of S. W. 1/4 of Sec 1
Town 3 Range 2. Aug 23, 1850

Section 1 Town 3 Range 2.



Beginning at corner of 1. 2. 11. 4. 12. Thence East Var 9° E 19.98 ch
and set 1/4 Post. Bearings

Br. C. 8 N 29° E 23 links
Br. C. 10 S 62° W 71 links 23

Thence North 20.21 chains set 1/16 Post Bearings

W. C. 16 N 29° W 30.
Br. C. 14 N 61 1/2° E 99. 25

West 20.00 ch 1/16 Post Bearings

W. C. 24 S. 61° E 9.
Do 14 N 73 1/2° E 35. 24

South to place of Beginning 19.95 chains

A true plot and record of survey.

Geo R. Steuts
County Surveyor