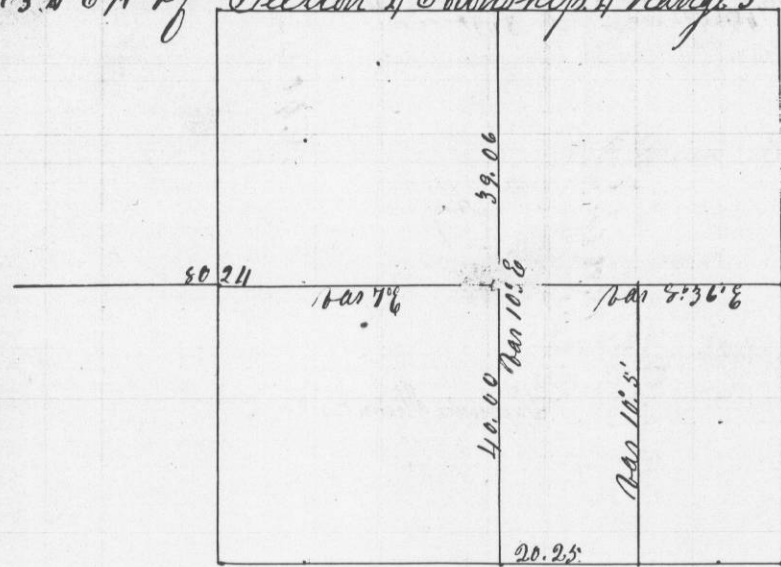


No 646

Survey made for George R Brunson of the S E 1/4 of Sec 4, Town 3, Range 5, July 24th 1850  
N 1/2 Sec 3, W 1/2 of Section 4 Township 4 Range 5



North between Sections 3 & 4 Bar 10° E. at 40.00 set 1/4 Post in mound. the original having been destroyed. Pit 6 links E at 79.06 Intersected at Section corner.

Then from the 1/4 Post on W side of Section 4 East Bar 8° E at 80.24 intersected 70 links N. of 1/4 P.

Thence through the center of Sec 3 Bar 8° 30' intersected section line 15 links S of 1/4 Post.

Then S through center of Sec 3 Bar 9° 50' E intersected at Post. N 1/2 40.19 chains. East from S.W. corner of Section 3 Bar 8° 30' E at 40.50 chains intersected at 1/4 Post. corrected post 20.25 chains & set 1/8 P in mound.

Then N. through center of said 1/4 Section Bar. 9° 45' E intersected 46 links East of 1/8 P of center. The North West corner of George R. Brunson's house bears S 52 1/2° E 221 links.

A true plot and record of said Survey  
Geo R Stuntz  
County Surveyor

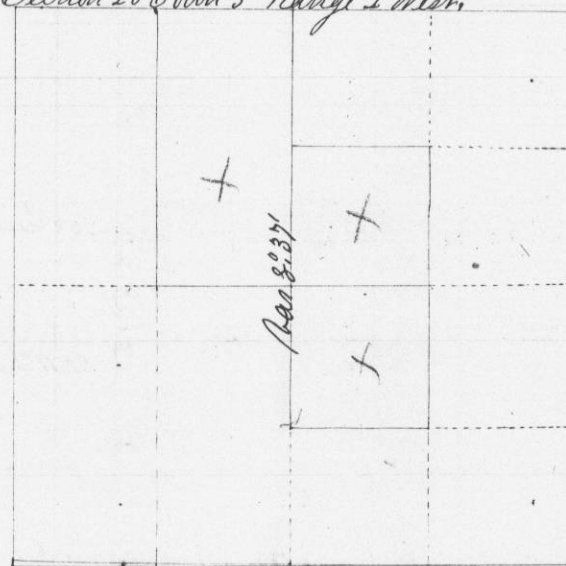
Marginal note: 'Merged'

Small handwritten mark: '+'

No 647

Survey made for Lewis Knox of the S.W. 1/4 of the N.E. 1/4, and the N.W. 1/4 of S.E. 1/4 and E 1/2 of N.W. 1/4 of Sec 20 Town 3 North, Range 2 West. March 15th 1850.

Section 20 Town 3 Range 2 West.



Beginning at the 1/4 Post on the North side of section, thence South Bar 8° 30' East intersected 16 links E of Post.

Then West through the center intersected 76 links north. Corrected back and set center Mitered post 15 links E of center. Bear B. Elder 10 N 37 W 28 1/2  
1/16 center of S.E. 1/4. Bearings { N. 0 14 N 58 W 47 1/2 } 1/8 Post { N. 0 10 N 25 1/2 W 24 }  
22 { W. 0 12 N 8 W 57 } S.E. of center { N. 0 8 S 65 W 17 } 17

1/16 Post-center of North East 1/4 Bearings { Line for corner 5 inches }  
{ N. 0 11 S 10 W 56 }

1/16 post North of center. Post in mound.

1/16 post South of center Bearings { B. Elder 9 S 1 E 54. }  
{ B Elder 6 S 12 W 31. } 21

1/8 E of N.W. corner. Bearings { N. Oak 15 N 3 E 47. }  
{ Br Oak 12 N 83 W 57. }

1/8 W of center. Bearings. { N. 0 12 N 77 E 33 links. }  
{ N. 0 9 N 5 W 58 links. } 12

A true plot and correct record of Survey  
George R Stuntz  
County Surveyor