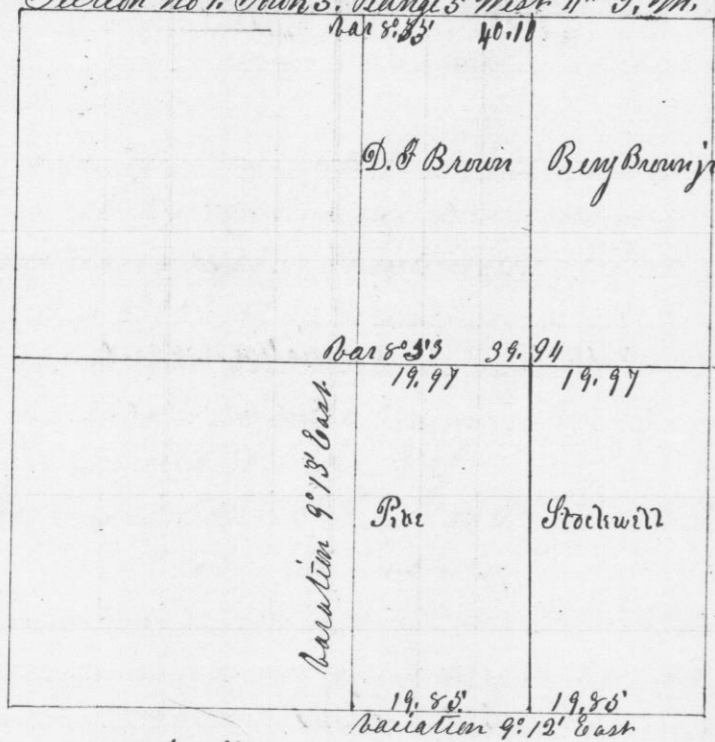


Survey made for George W. Pike and Ira Stockwell of the S.E. 1/4 of Sec. No. 1, T. 5. R. 5. West. West 1/2 for Pike. E 1/2 for Stockwell. Section No. 1. Town 5. Range 5. West 11th P.M.



Beginning at the C.E. corner of said section. Thence West variation 8° 30' E. 39.71 intersected 100 links North of 1/4 Post. Corrected East 19.85 chains and set 1/4 Post.

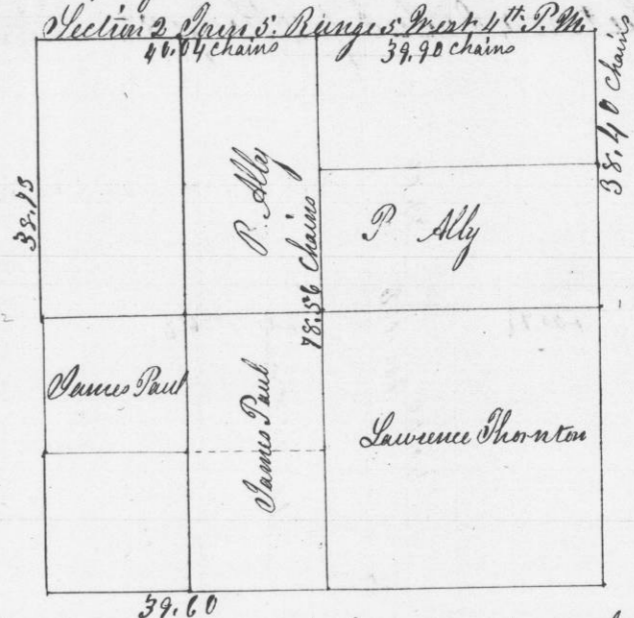
Then North through center of Section bearing 9° 10'. At 78.10 chains intersected Section line 7 links East of 1/4 Post North side of Section. Thence East bearing 8° 30' E. 40.10' intersected 7 links South of Section corner. Then South ^{through center of Sec} bearing 9° 12' 11.40 intersected interior line 8 links West of 1/4 Post. Then West through the center of Section bearing 8° 30' East. Intersected West Section line 5.3 links North of 1/4 Post. Corrected back and set 1/4 Post in center in mound.

Thence East 19.97 chains and set 1/8 post in mound marked 1/8 across the East 1/2 39.94 chains.

Thence South 40.04 chains and established 1/2 Post } B.O.S. 418 194
} B.O.S. 178 1/2 W 276

I hereby certify that the above is a true record and plot of said survey.
Geo Kesteven
County Surveyor

Survey made for Lawrence Thornton S.E. 1/4 of Sec. 2. R. Ally & 1/2 of N.W. 1/4 and S. 1/2 of N.E. 1/4. James Paul & 1/2 N.W. 1/4 of S. 2. R. 4. Town 5 R. 5.



Beginning at 1/4 Post. Variation 8° 30' E. at 80.10 chains intersected section line 30 links North of 1/4 Post. on West side of section.

Then run North between sections 10 & 11. bearing 9° 30' 39.8 chains 1/4 Post in mound 78.76 chains Section corner in mound.

West on the South side of Section bearing 8° 45' E. West 1/2 39.60 chains. Thence North bearing 10° 8' 40. set 1/4 Post where previously established

Then North from 1/4 Post on East side of Section bearing 10° 6' 38.40 intersected Town line 21 links East of Sec Corner bearing } B.O.S. 8. W 19 1/2 W 64 1/2. Thence run West bearing 8° 30' 39.90 chains intersected at 1/4 Post bearing } B.O. 4. N. 318. 240 Thence West 40.04 chains & set post in original mound. Thence South bearing 10° East 38.73. Intersected 29 1/2 links West of 1/4 Post } B.O. 5. N. 347. W 267 B.O. 8. S. 3 W 320. Then North through the center bearing 10° 05' 78.56 chains intersected 30 links East of 1/4 Section Post.

1/16 Post N of S.W. Corner in mound. 3/16 Post South of center in mound. 1/8 Post E of S.W. Corner in mound. 1/16 Post North of center in mound. 1/8 Post West of center in mound. 1/8 Post West of N.E. Corner in mound. 1/8 " East of center in mound. 1/16 Center of N. & 1/4 } Bearings } B.O. 8. N. 278 35 1/2 } B.O. 6. N. 45 1/2 W 287 } B.O. 5. S. 110 E 18

A true plot and record of survey. Geo Kesteven Co. Surveyor