

No. 640

Survey made for Samuel Braban of the West half of the North west quarter of Section No three in Township five North, of Range six west of the fourth Mer. June 8th 1850

Beginning at the North west corner of said Section Thence South var 9^o East At 43.28 Chains Intersected quarter Section corner Thence run East var 9^o E

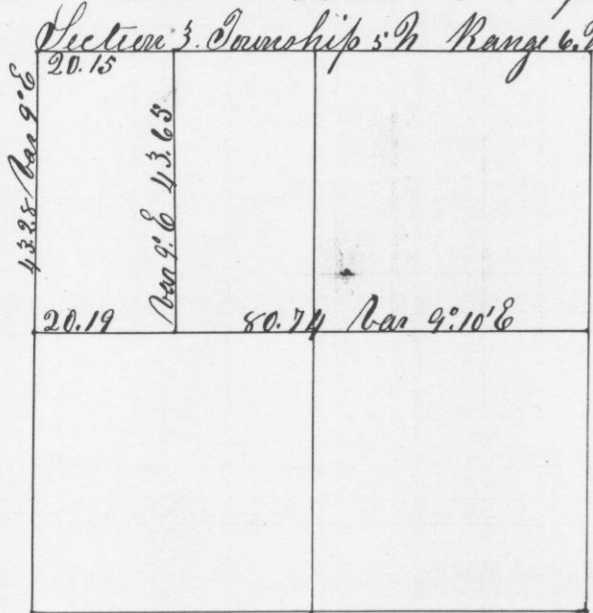
At 80.74 Chains Intersected Section line 34 links South of quarter section corner

Thence curved back 60.55 Chains and set 1/8 post - Bearings } Black Oak 10 S 82 W 24 links } B 20.14 S 28 W 30 links

Thence run North var 9^o E 43.65 Chains to Township line and set 1/8 post -

Bearings } White Oak 14 N 8^o E 30 links } White Oak 20 N 68 1/2 W 74 links

Thence west 20.15 Chains to the place of Beginning



A true plot and record of survey

Geo. H. Murty -
County Surveyor

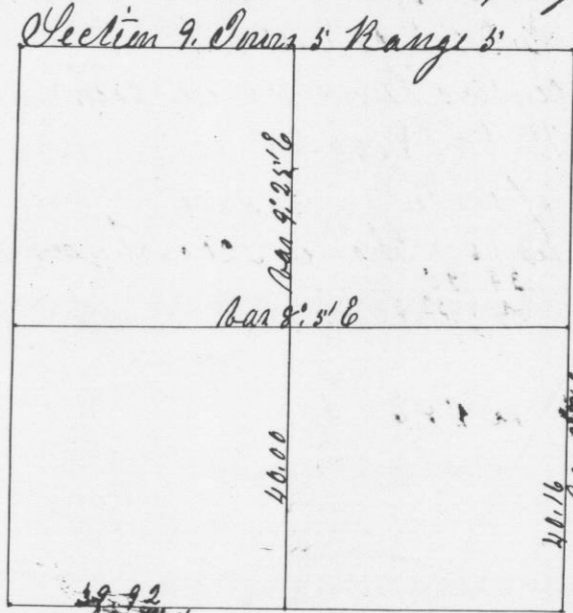
No. 641

Survey made for John Garsides of the N.W. 1/4 of S.E. 1/4 and N.E. 1/4 of S.E. 1/4 and for Hugh Garsides of the South 1/2 of the S.E. 1/4 and the South East 1/4 of the South west quarter all in Section No. 9 in Township No five 5th North, of Range five west of the fourth Mer. June 9th 1850.

Beginning at the South East corner of said Section Thence run North var 9^o E At 40.16 Chains Intersected interior line 20 links East of quarter Section corner Thence run West var 8^o E. And intersected Section line 12 links North of quarter section corner on west side of Section.

Thence run South through the center of Section var. 9^o 10' E. 1/2 40. Chains Intersected Section line 36 links west of quarter Section post. Thence run west var 7^o 40' E

At 59.92 Chains Intersected Section corner Curved back 19.96 & set 1/8 post in mound



A true plot and record of survey

Geo. H. Murty
County Surveyor
G. H. Wis.