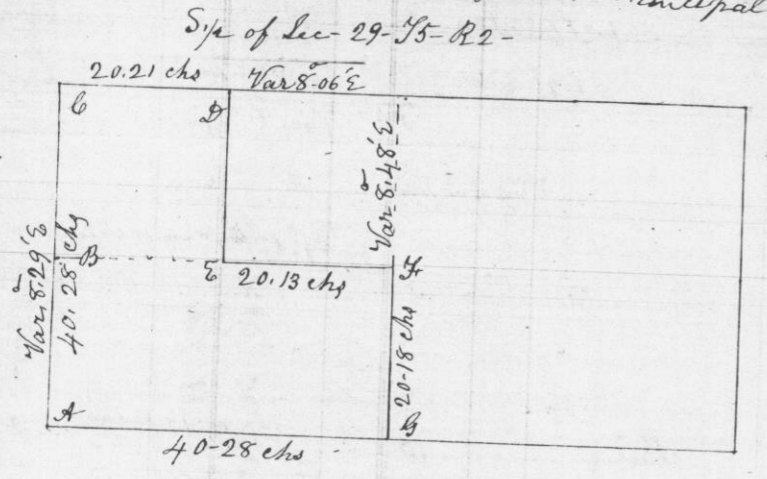


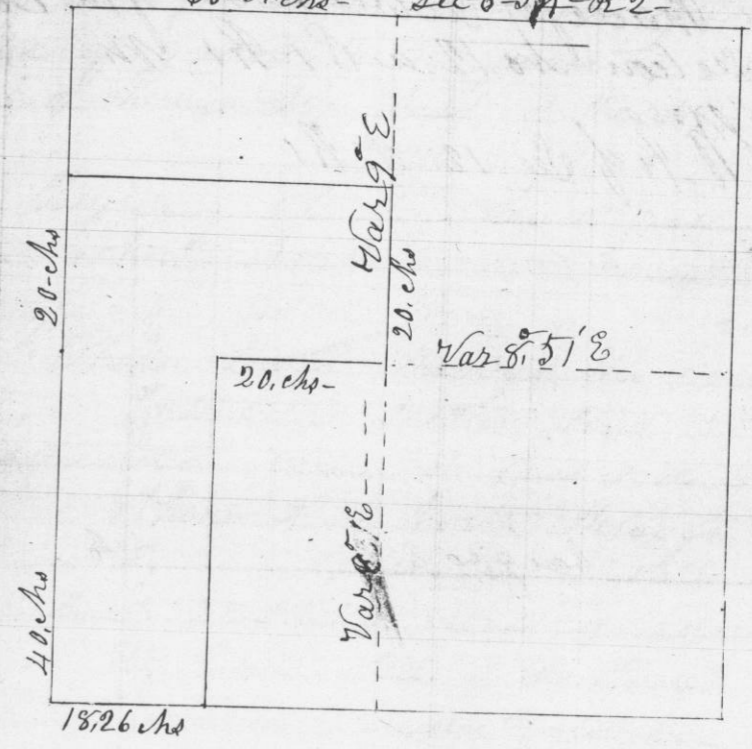
Survey made for James Wilkinson & William Roberts of the W<sup>1</sup>/<sub>2</sub> of S<sup>1</sup>/<sub>4</sub> of the S.E. <sup>1</sup>/<sub>4</sub> of S.W. <sup>1</sup>/<sub>4</sub> of Sec-29-T5-R2 West of the 4<sup>th</sup> Principal Meridian



Commencing at S.W. corner of Sec-29- T5-R2- Thence North (Var 9° E) 40.28 chains Intersected 38 links west of <sup>1</sup>/<sub>4</sub> Post (set temporary <sup>1</sup>/<sub>16</sub> post) From <sup>1</sup>/<sub>4</sub> post East (set <sup>1</sup>/<sub>8</sub> post & <sup>1</sup>/<sub>4</sub> post temporarily) to <sup>1</sup>/<sub>4</sub> Post on East side of Sec (Var 9° E) intersected 128 links north of <sup>1</sup>/<sub>4</sub> Post- Thence from <sup>1</sup>/<sub>4</sub> Post on north side to <sup>1</sup>/<sub>4</sub> Post on South side of Sec- (Var 8 1/2° E) intersected 44 links <sup>west</sup> of <sup>1</sup>/<sub>4</sub> Post- from corrected Centre South 40.36 chains- From <sup>1</sup>/<sub>4</sub> Post on South side West 40.28 chains to place of beginning- Thence corrected & set corners and marked lines- Bearings at corners Established- to wit

<sup>1</sup>/<sub>16</sub> Post at B W. O. 20 N 47° W 15 links = R. O. 14 S 56° E 53 links }  
<sup>1</sup>/<sub>16</sub> " " F. R. O. 11 N 47 " 46 " = W. O. 15 " 83 " 99 " }  
<sup>1</sup>/<sub>8</sub> P. " D. B. O. 10 " 55 E 3.68 " = R. O. 9 N 45 W 201 " }  
<sup>1</sup>/<sub>16</sub> " " E W. O. 12 " 54 " 37 " = W. O. 15 S 59 " 95 " }  
Corners A, & <sup>1</sup>/<sub>4</sub> Posts at C & G- Original - - -  
I hereby Certify that the above is a correct representation of said Survey made Dec 17<sup>th</sup> A.D. 1850  
Geo. R. Stuntz  
County Surveyor  
G. C. Wis-  
Pr Stephen Mahood  
Deputy

Survey made for William Roberts of the W<sup>1</sup>/<sub>2</sub> of S.W. <sup>1</sup>/<sub>4</sub> & N<sup>1</sup>/<sub>2</sub> of N.W. <sup>1</sup>/<sub>4</sub> of Sec-6-T4-R2 west of the 4<sup>th</sup> Principal Meridian



Commencing at <sup>1</sup>/<sub>4</sub> Post on North side of section (<sup>1</sup>/<sub>4</sub> Post, corrected) Thence South to <sup>1</sup>/<sub>4</sub> Post on South side of section (Var 9° E) intersected at <sup>1</sup>/<sub>4</sub> Post- Thence from N.W. corner of Sec- South 40 chains to <sup>1</sup>/<sub>4</sub> Post, (corrected) Thence East thro' Sec- to <sup>1</sup>/<sub>4</sub> Post on East side of section (Var 9° E) intersected 21 links North of <sup>1</sup>/<sub>4</sub> Post - - - Corrected & established <sup>1</sup>/<sub>4</sub> Post in Centre of Sec- R. O. 4 S 53° E 10 links } Thence West Corrected & established <sup>1</sup>/<sub>8</sub> Post Y. O. 11 S 53° E 13 " } W. O. 6 S 64° W 9 links = Thence from S.W. corner, East to <sup>1</sup>/<sub>4</sub> Post 38.26 chains; Corrected & established <sup>1</sup>/<sub>8</sub> Post, no bearings = Thence from Centre Post North 20 chains; corrected & established <sup>1</sup>/<sub>16</sub> Post R. O. 10 N 55° W 125 links = W. O. 8 S 84° E 154 links = Thence West without chaining to <sup>1</sup>/<sub>16</sub> Post on Range line, corrected & established the same- W. O. 7 S 10 1/2° E 40 links = W. O. 8 N 30° E 59 links - - -

I hereby Certify that the above is a correct Record of said Survey made Dec, 18<sup>th</sup> A.D. 1850  
Geo R. Stuntz -  
County Surveyor  
G. C. Wis  
Pr Stephen Mahood