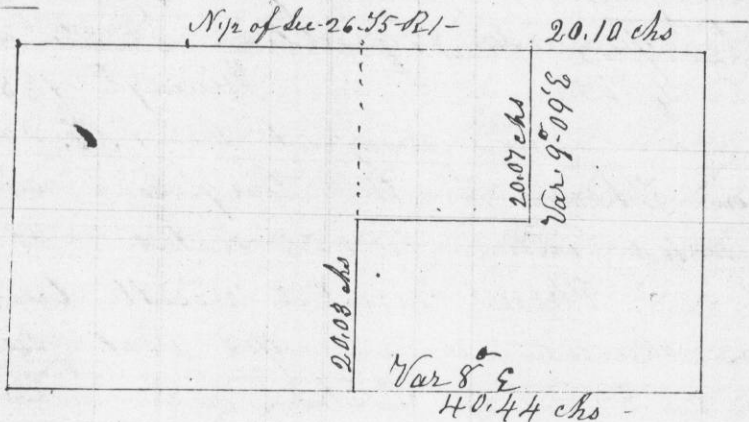


Survey made for George M. Lee of the E¹/₂ of NE¹/₄ of NW¹/₄ of NE¹/₄ of Section No 26-55-R1 west of the 4th Principal Meridian -



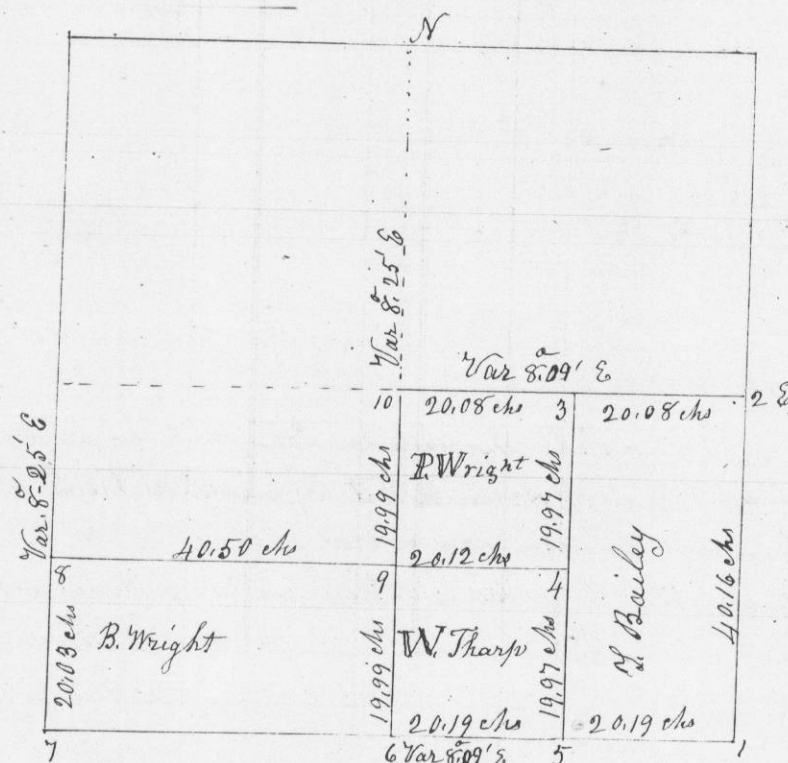
Commencing at 1/4 Post on West side of Section. Thence East (Var 8° E) intersected at 1/4 post on East side of Section - Thence North 40.14 chains Var 9° E intersected 22 links East of Corner - Thence West 40.20 chains Var 8° E intersected at 1/4 post - Thence South 40.06 chains to line thru Centre - Thence South without chaining to 1/4 post, corrected & set 1/4 post in Centre of Section; post appropriately marked & set in prairie - all corners appropriately marked & set in prairie - I hereby certify that the above is a correct & true plot and Record of said Survey made March 23^d 1850

Geo. R. Stuntz
County Surveyor
G. C. Wis

Pr Stephen Mahood
Deputy

PAGES 210-229
MISSING

Survey made for Thomas Bailey & others in Sec-29-56-R2 west of the 4th Principal Meridian
Sec-29-56-R2 ---



Commencing at S.E. Corner of Sec - Thence West 40.38 chains (Var 9° E) intersected 46 links S. of 1/4 Post - Thence North 79.95 chains Var 9° E - intersected 82 links West of 1/4 Post - Thence from 1/4 Post on West side of Sec - East - Var 8° 09' E - chained from Centre East 40.16 chains to 1/4 Post on East side - set temporary posts in running the several lines which were corrected & established - the divisions of quarter Sec - were made in the same manner - Corners at 1, 2, 6 & 7 Original - at 3, 4 & 5 Posts appropriately marked; set without mounds or bearings - at 8 Br. C. 11 S 57° E 51 links - Br. C. 8 N 45° W 31 links - at 9 Br. C. 17 N 48° E 35 links - Br. C. 12 S 34° W 100 links - at 10 Br. C. 12 S 2° W 4.57 links - S.E. Corner of School House N 48° W 184 links -

I hereby certify that the above is a correct representation of said Survey made June 7th 1850

Geo. R. Stuntz
District Surveyor
G. C. Wis

Pr Stephen Mahood
Deputy