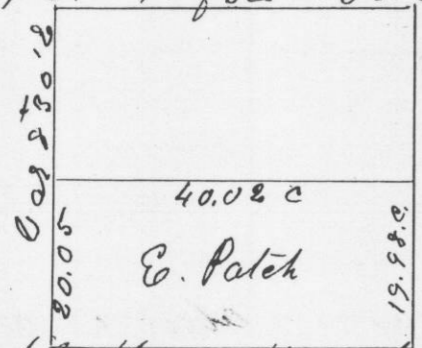


Survey made for Elijah Patch of the South half of the South West quarter of Section No. thirty four (34) in Township No six (6) North of Range No Five West of the fourth principal Meridian

Beginning at the South West Corner of said Section Thence run North Variation 9° E. At 40.10 Chains intersected interior line thirty five links West of quarter Section post Thence corrected back South 20.05 Chains and set 1/16 post bearing White Oak 22 S. 65 W. 195 links Thence run East through the center of Section Variation 8.30° E. and intersected Section line 10 links South of quarter Section corner. Thence run North through the center of section bearing 8.30° E and intersected Section line on the West side of said Section 10 links West of quarter Section post Thence curved back South True bearing 9.25° E and established the center in Mound Making the South half 39.96 Chains. Thence corrected South 19.98 Chains and established 1/16 post in mound Thence run West to 1/16 post previously established 40.02 Chains bearing 8.30°

S.W. 1/4 of Sec 34 T.6. R.5. W.



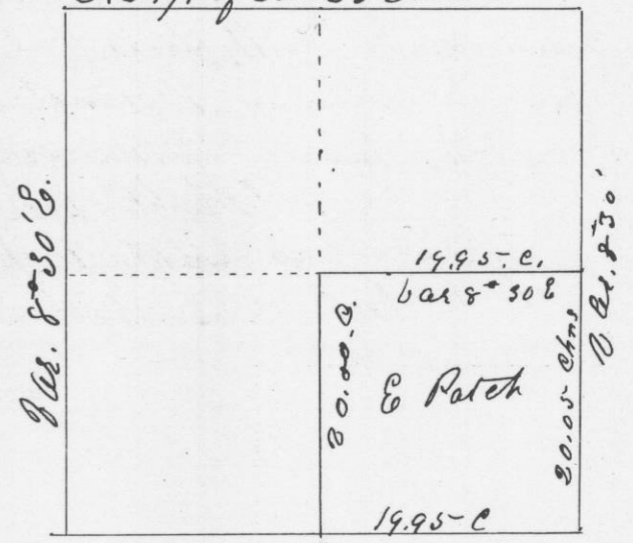
I hereby certify that the above is a true plot and summary of said survey made by me on the 5th day of June A.D. 1850 Geo. H. Stuntz County Surg. G. C. Wis

Survey made for Elijah Patch of the South East 1/4 of S.E. 1/4 of Section No 32 in T.6. N. 5 West 4th Mer. June 7th 1850

Beginning at the S.W. corner of said Section Thence North bearing 9° E. At 40.10 Chains intersected interior line 35 links West of 1/4 Section post Thence corrected South true bearing 8.30° E. 20.05 Chains and set 1/16 post bearing White Oak 22 S 65 W 195 links

Thence beginning at the South East Corner again run West bearing 8.30° E At 39.90 Chains intersected interior line 10 links North of 1/4 Section post Thence corrected back 19.95 Chains and set 1/8 post in Mound Pit 5 links S.E. Thence run North bearing 8.30° E 20.05 Chains and set post in Mound Thence run East bearing 8.30° E to 1/16 post previously established.

S.E. 1/4 of Sec. 32 S. 6 N. 5



I hereby certify that the above is a true record of plot & survey Geo. H. Stuntz County Surgeon of G. C. Wis