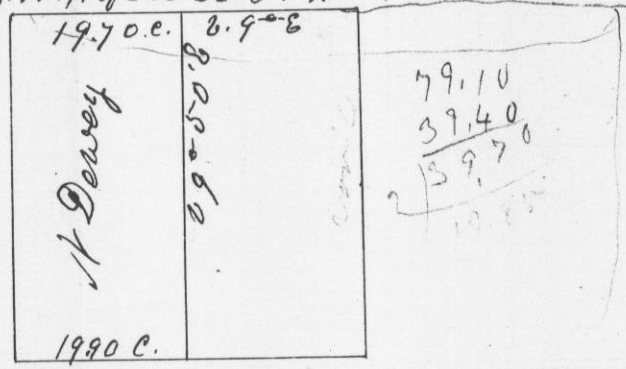


Survey made for Nelson Dewey in Section No 26 in Township No four North of Range No five West of the fourth principal Meridian May 6<sup>th</sup> 1850

Beginning at the quarter section post on the East side of said Section. Thence West (var. 9<sup>th</sup> East) 79.10 Intersected quarter section corner Thence South from 1/4 section corner on North side of Section. Intersected 44 links West of 1/4 post on South side of Section. Thence run West var 9<sup>th</sup> E. 39.80 Intersected 8 links North of Section corner Thence set post for corner to Sections 26, 27, 34 & 35

beginning Apex S N 61 1/2 E 24 links Corrected East 19.90 chains & set 1/8 post - bearing N.W. corner of a log cabin br. S 35 1/2 E 15 links S.E. corner of a stone chimney base. N 26 W 190 links Thence run North var 9<sup>th</sup> 50 East - 40 chains and set 1/8 post - Blue Oak br. N 28 W 240 links Blue Oak br. S 64 E 343 links

Thence West 19.70 links to N.W. corner S.W. 1/4 of Sec 26 T4 R5 W.

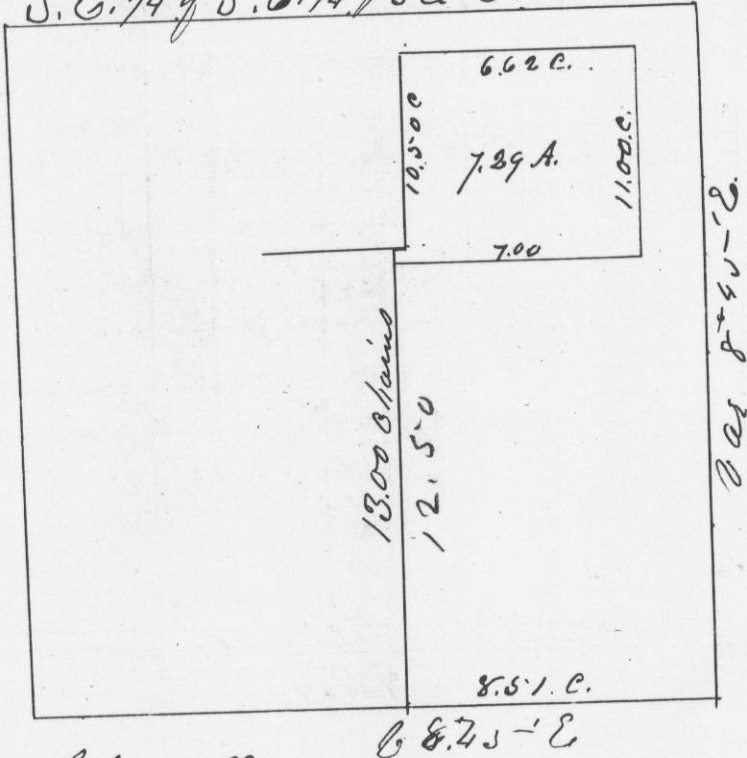


I hereby certify that the above is a correct Record of Survey  
Geo R Stuntz  
County Surveyor  
G. E. Wis.

Survey made for Theodore Gehlen of a lot in Section number 26 in Township No. three 131 North of Range No. 3 West of the 4<sup>th</sup> principal Meridian.

Beginning 8.51 links West and 13.00 links North of the South East corner of said Section. Thence South fifty links of the East 7.00 chains to a post bearing Black Oak S 8.13 E 38 links Thence North 11.00 & set post - Black Oak S 8.37 W 29 links Thence West 6.62 links and set post - W. Oak S 50 E 26 links Thence South 10.50 Thence West 38 links along the South line of J. Roots line to Anton Webber N.E. corner the place of beginning containing 7.29 acres

May 23<sup>rd</sup> 1850  
S.E. 1/4 of S.E. 1/4 Sec 26, T5 R3



A true Record  
Attest - Geo R Stuntz  
County Surveyor