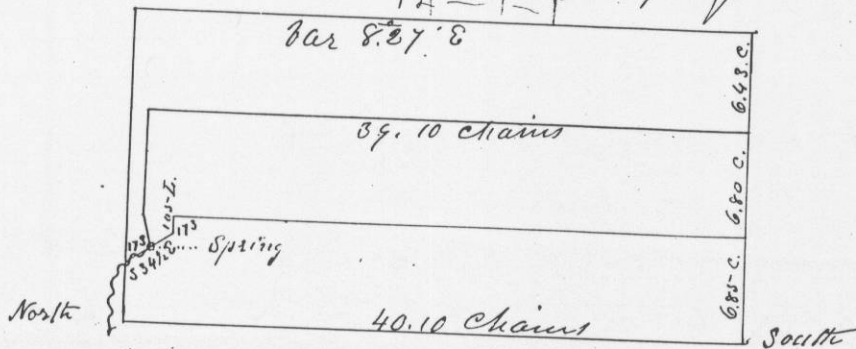


Survey and division into three equal parts
 of the West-half of the South West-quarter
 of Section No 14 in Township No 1 North
 of Range No. 1 West of the 4th principal meri-
 -ian December 31st 1849
 Made for William Sineox Joseph Simmons
 and Henry Simmons

Beginning at the quarter Section post on
 the West-side of said Section, Thence
 East - $\text{Var } 83^{\circ} 0'$ at 80.50 Chains intersected
 Section line 70 links South of $\frac{1}{4}$ corner
 Thence South from the $\frac{1}{4}$ Section corner on the
 North side of said Section $\text{Var } 83^{\circ} 0'$ East -
 South $\frac{1}{2}$ 40.10 Intersected Section line 7 links
 East of $\frac{1}{4}$ Section corner, Thence West -
 $\text{Var } 9^{\circ}$ East - at 40.16 Chains Intersected
 Section line 14 links North of Section corner
 Thence run North to the quarter Section corner
 and marked a Linden 7 inches in diameter
 for a new bearing tree - course $\text{N } 5^{\circ} \text{ E } 36$ links
 Thence East - 3.70 links. Thence $\text{S } 34^{\circ} \text{ E } 346$ links at
 at 173 links on this course center of Spring. Thence East
 105 links. Thence South to the Section Line 685 links East
 of the S.W. corner of said Section. Thence East 680 links
 Thence North 39.10 chains Thence West 685 links
 Thence $\text{S } 76^{\circ} \text{ W } 200$ links to the center of the Spring

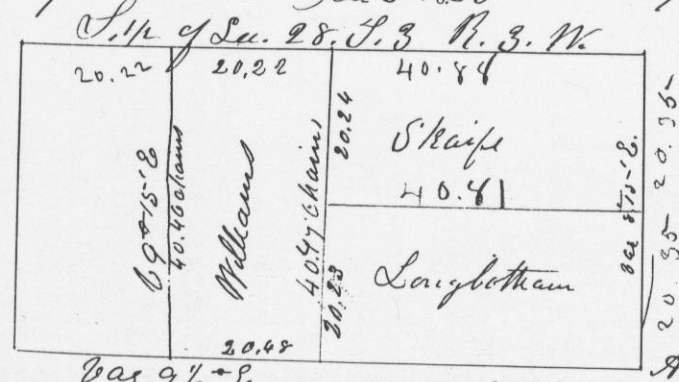


A true Record Allet Geo. R. Hunt
 County Surveyor

from

Survey made for David Williams William
 Loughbottam and Samuel Skafe in Section No. 28

in Township No. 3 North of Range No. 3 West of the 4th
 principal meridian. Beginning at the South East
 corner of said Section Thence North $\text{Var. } 87^{\circ} 5'$ E. at 40.70
 chains Intersected quarter Section corner. Thence run
 West $\text{Var. } 8^{\circ} 40'$ East - at 81.32 chains Intersected
 Section line 70 links North of quarter Section corner
 Thence run South through the center of said Section.
 At 40.47 chains on South half intersected Section line
 50 links West of quarter Section corner. Thence run
 West $\text{Var } 84^{\circ} 5'$ East - at 40.96 chains Intersected Section
 line 53 links North of Section corner. Corrected
 back 20 & 48 chains and set $\frac{1}{8}$ Post - Bearings
 } White Oak 13 N 50 E 55 links
 } White Oak 16 N 69 W 18 links Thence run North
 line $\text{Var } 9^{\circ} 5'$ East - 40.46 Chains and established $\frac{1}{8}$
 Post } White Oak 18 S 48 E 50 links
 } White Oak 28 N 48 W 35 links Thence East true
 $\text{Var } 9^{\circ} 15'$ E. 20.22 chains and established $\frac{1}{4}$ post
 in the center of Section } White Oak 12 S 23 E 53 links
 } White Oak 14 N 46 E 46 links
 Thence run South 20.24 chains and set $\frac{1}{16}$
 post $\text{Var } 9^{\circ} 5'$ E } White Oak 9 S 84 W 68 links
 } White Oak 18 N 2 E 78 links
 Thence run East - 40.81 chains and set
 $\frac{1}{16}$ post on Section line } White Oak 12 N 18 W 44 links
 $\text{Var } 9^{\circ} 15'$ East - Jan 3rd 1850 } Blue Oak 7 S 61 W 81 links



A true Record Allet Geo. R. Hunt County Surveyor