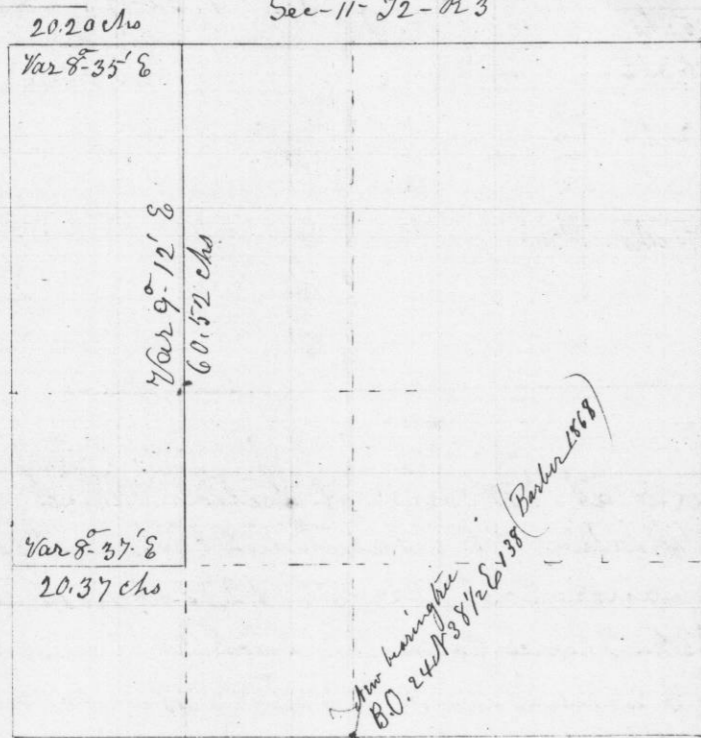


Survey made for John E. Hough of the NW ^{of the} NW ^{1/4} of Sec-11-12-13 west of the 4th Principal Meridian
Nov 1st 1849



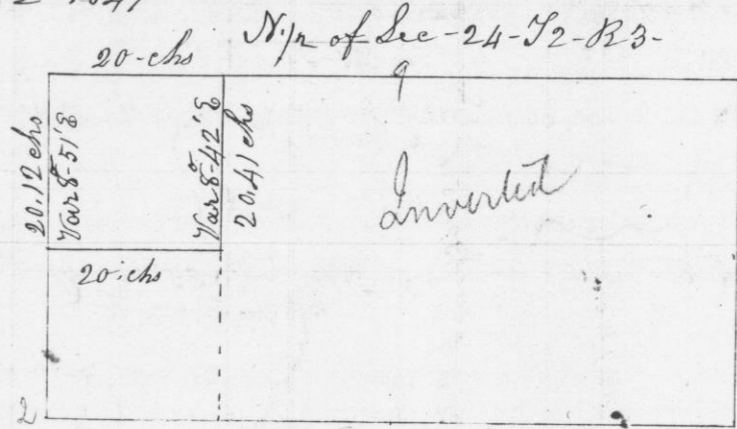
Beginning at NW corner of Section: Thence East (Var 9° E) 40.40 chains; intersected 30 links north of 1/4 post; Corrected back 20.20 chains & set 1/16 post; bearings Elm 15 S 13° E 46 links = R. O. 20 N 72° W 41 links = Thence South (Var 9° E) 80.69 chains, intersected 30 links west of corrected 1/8 post. Corrected back 20.17 chains & set 1/16 post near old Hay shelter of J. P. Cox bearings Honey Locust 4 N 78° E 40 links = From 1/4 post on South side of Sec- West to S.W. corner 40.75 chains = From thence North 20 chains (Var 9.12° E) set 1/16 post = Double Elm 12 North 106 links = Br. O. 11 N 64° W 66 links

I hereby Certify that the above is a true record of Survey made November 1st 1849

Geo. B. Stuntz -
County Surveyor
G. C. Wis

Pr Stephen Mahood
Deputy

Survey made for John Rupp of the S. E. 1/4 of the N. E. 1/4 of Sec-24-12-13 west of the 4th Principal Meridian
Nov. 2^d 1849



Commencing at 1/4 Post on North side of Section Thence South (Var 9° E) intersected 44 links East of 1/4 Post on South, corrected back to 1/2 distance from 1/4 post = Thence East to 1/4 post on East side 40 chains = Thence from 1/16 post West to line thro. centre 40 chains = corrected back 20 chains & set 1/16 post = W. O. 22 N 38 1/2° E 100 links = No. other = Thence South 20.41 chains to corrected 1/8 post, W. O. 20 N 16 1/2° E 19 links = W. O. 15 S 5 1/2° E 35 links = marked lines & set N.E. corner or 1/16 post on Range line North of 1/4 post = W. O. 22 N 82 1/4° E 34 links W. O. 20 S 72 1/2° W 67 links = NW 1/2 of Sec- Surveyed into Lots on Grant River & Mississippi

I hereby Certify that the above is a correct record of said Survey made November 2^d 1849 -

Geo. B. Stuntz
County Surveyor
G. C. Wis

Pr Stephen Mahood
Deputy