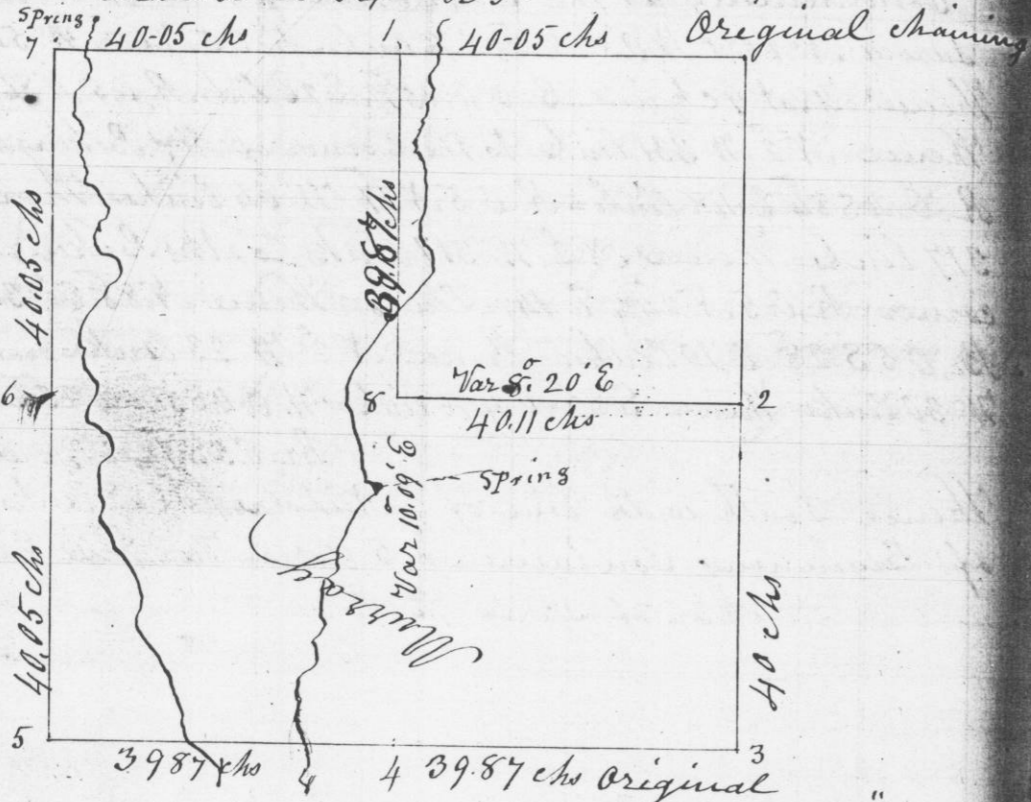


Survey made for Augustus L. Murray of the NW 1/4 and the SE 1/4 of Sec - No 26-54-R3 west of the 4th Principal Meridian Oct. 16th 1849

Section 26-54-R3-



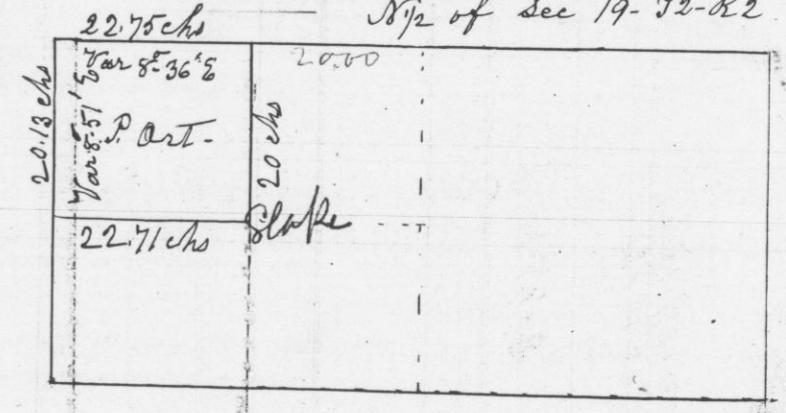
- Corners & Bearings
- at 1 New bearing } at 6 Br. O. S N 57 1/2 E 61 links
 - R. O. 6 N 13 W 55 } " 155 52 E 127 "
 - Br. O. 16 S 68 3/4 E 535 } " 7 Post in mound 3
 - " 2 Stone set in road } " 8 W. O. 15 S 74 E 502 links
 - " 3 Post " " } # No other - - -
 - " 4 W. O. 30 N 89 1/3 W 545 links } # established
 - " " 28 S 66 " 455 " 3
 - " 5 W. O. 18 N 36 W 57 " 3
 - " " 13 N 87 E 110 " 3

I hereby certify that the above is a true plot and correct record of said Survey

Geo. R. Stuntz
District Surveyor
G. C. W.
Pr Stephen Mahood
Deputy

Survey made for Peter Ort of the NW 1/4 of the NW 1/4 of Sec - No 19-52-R2 west of the 4th Principal Meridian Oct. 31st 1849

N 1/2 of Sec 19-52-R2



Commencing at N.W. corner of section, thence South 40.25 chains to 1/4 Post - Variation 9° E, intersected 12 links East of 1/4 Post - From N.W. corner East (Var 9° E) 42.75 chains, intersected 29 links North of 1/4 Post - Thence corrected back 20 chains & set 1/8 post - Bearing W. O. 22 S 58 E 28 links = W. O. 18 N 84 1/3 W 45 links, thence South 20 chains set stake without bearings - Thence West (Var S. 36° E), 22.71 chains intersected at corrected 1/16 post - & set post with bearings, to wit W. O. 22 N 82 1/4 E 34 links - W. O. 20 S 72 1/2 W 67 links - Having no means of crossing Big Platte, is the reason of not running from 1/4 Post to 1/4 post through the centre of section -

I hereby certify that the above is a correct representation and true minutes of said Survey

Geo. R. Stuntz
Dist. Surveyor
G. C. W.
Pr Stephen Mahood
Deputy