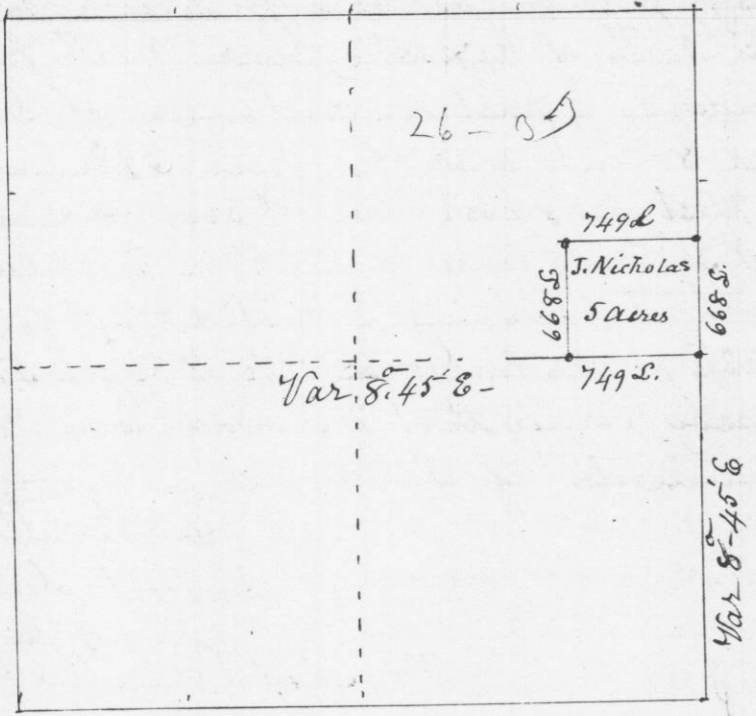


N^o 603

Survey made for John Nicholas of a lot of land in the S.E. corner of the N.E. 1/4 of the N.E. 1/4 of Sec. N^o 26-53-R3 west of the 4th Principal Meridian in Grant County Wisconsin Oct 24th 1849

Commencing at the 1/16 post on Section line bearings
R. O. 6 N 66 3/4 E 43 links = W. O. 6 S 41 W 42 links = Thence North on Section line 668 links = R. O. 4 S 10 W 42 1/2 links
R. O. 5 N 14 E 50 links = Thence West 749 links
W. O. 11 S 51 1/2 E 23 links = Br. O. 5 S 7 1/4 E 19 1/2 links = Thence South 668 links = W. O. 5 N 12 3/4 E 76 links = R. O. 5 N 6 1/2 W 54 links
Thence East 749 links to the place of beginning containing 5 Acres - Var. 8-45 E - Oct 24th 1849
N.E. 1/4 of Sec-26-53-R3-

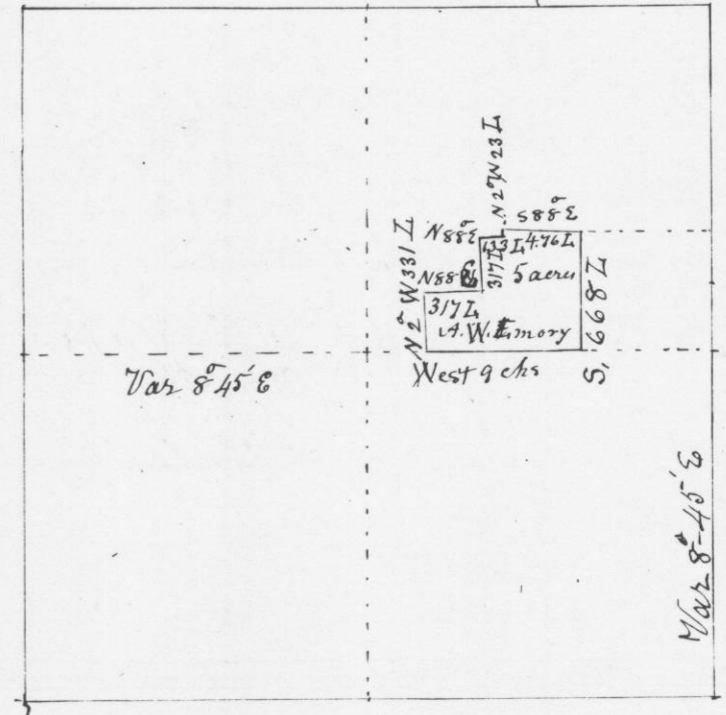


I hereby certify that the above is a true plot & correct representation of Survey
Geo. R. Stuntz - District Surveyor
G. C. W.
Pr Stephen Mahood Deputy

N^o 604

Survey made for A. W. Emory of a lot of land in the N.E. 1/4 of the N.E. 1/4 of Sec. N^o 26-53-R3 West of the 4th Principal Meridian: Oct 25th 1849

Commencing at the S.W. corner of John Nicholas' lot (see Survey N^o 603) W. O. 5 N 12 3/4 E 76 links = R. O. 5 N 6 1/2 W 54 links
Thence West 9 chains = Br. O. 4 N 5 7/8 E 26 links = R. O. 5 N 8 6 W 40 links
Thence N 2 W 331 links = to the corner of Mrs Polkinghorns lot
R. O. 4 S 8 4 E 48 links = R. O. 5 N 7 7 W 64 links = Thence N 88 E 317 links = Thence N 2 W 317 links to Mrs Polkinghorns N.W. corner
R. O. 5 N 2 3/4 E 14 1/2 links = Thence N 88 E 133 links
Br. O. 5 S 28 E 10 links = Thence N 2 W 23 links = double R. O. 5 N 8 2 1/2 W 30 links = Thence S 88 E 4.76 links = W. O. 11 S 51 1/2 E 23 links = }
Br. O. 5 S 7 1/4 E 19 1/2 links }
Thence South with line of J. Nicholas' lot 668 links to the place of Beginning containing 5 Acres - Var 8-45 E -
N.E. 1/4 of Sec-26-53-R3-



I hereby certify that the above is a true plot & correct record of Survey
Geo. R. Stuntz District Surveyor
G. C. W.
Pr Stephen Mahood