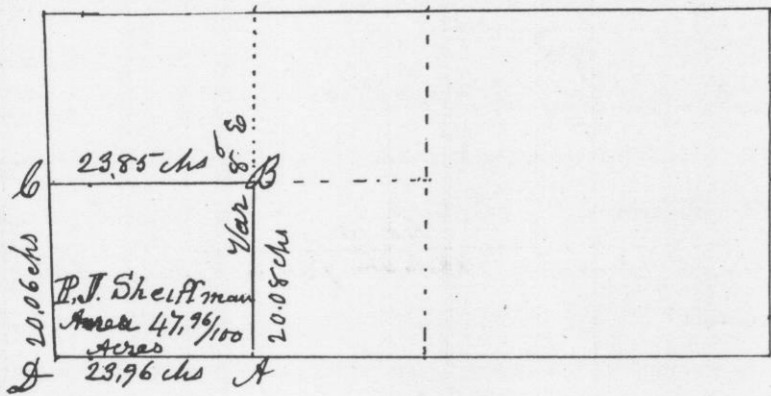


Survey made for Peter J. Sheiffman of the S.W. 1/4 of the S.W. 1/4 of Sec. No 7 - T2 - R2 west of the 4th Principal Meridian - Run from 1/4 post on North side, to 1/4 post on S side of section - thence from 1/4 post on west side of section East to Big Platte River, the 1/4 post on East side of section being overflowed by the back-water, and consequently inaccessible - Corrected from Centre of North & South line thro. Centre of section, and established corner 1/8 post on South side of S.W. 1/4 - W.O. 18 N 45 W 65 links
 W.O. 14 S 15 W 57 links - at A - thence north to 1/8 post 40.18 chs Corrected - thence from 1/16 post on west side of S.W. 1/4, East to 1/16 post on East side of said 1/4 - Corrected back & set 1/16 post in Centre of said 1/4 section W.O. 18 S 21 W 72 links
 Aspen 4 N 38 E 16 links. at B. = Bearings at 1/16 post a c. W.O. 18 S 63 W 118 links - W.O. 14 S 14 1/2 E 83 links - thence South to section corner at D = W.O. 11 S 11 W 37 links
 W.O. 17 N 61 W 145 -

S 1/2 of Sec - 7 - T2 - R2 - W - -

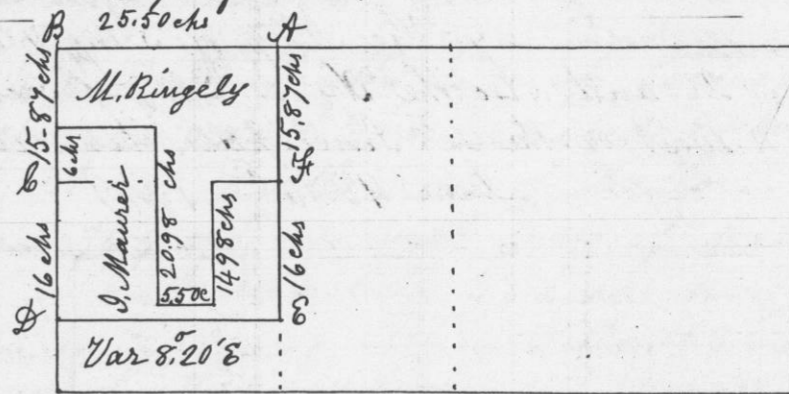


I hereby certify that the above is a true plot & correct minutes of Survey made June 2^d A.D. 1849

Geo. R. Stuntz
District Surveyor
G. C. Wis

Dr Stephen Mahood
Deputy

Survey made for Michael Ringely & Joseph Maurer in the west half of the N.W. 1/4 of Sec. 7 - T2 - R2 west of the 4th Principal Meridian - N 1/2 of Sec 7 - T2 - R2 - -



Commenced at N.W. corner of section; thence ^{East} 45.50 chains to 1/4 post corrected back to 1/8 post at A. Bearings W.O. 12 N 53 W 69 links
 R.O. 55 22 W 40 links = bearings at B W.O. 15 N 62 W 33 "
 W.O. 18 S 68 W 160 " thence South on corrected line 1587 links
 W.O. Stump 18 S 53 E 26 links at C = thence South 16 chains to the S.W. corner of Maurer's 40 Acres at D. W.O. 20 S 40 W 211 links
 W.O. Stump 16 S 29 E 53 links - thence East to corrected line from 1/8 post to 1/8 post - bearings at E W.O. 14 N 37 W 60 links
 W.O. 20 S 19 E 15 1/2 links - thence North 16 chains to Maurer's N.E. corner at F = W.O. 20 N 67 W 61 links - B.O. 55 50 E 37 links - thence North 15.87 chains to place of beginning - thence from C East 12 chains to corner of land Exchanged - north 6 chains West 12 chains to Range line = thence from post 12 chains East from C - South 14.98 chains to double W.O. Stump 24 inches diameter - East 5.50 chains - North 14.98 chains - set posts without bearings, to lots Exchanged

I hereby certify that the above is a true plot & correct minutes of Survey made June the 4th 1849

Geo. R. Stuntz
District Surveyor
G. C. Wis

Dr Stephen Mahood
Deputy