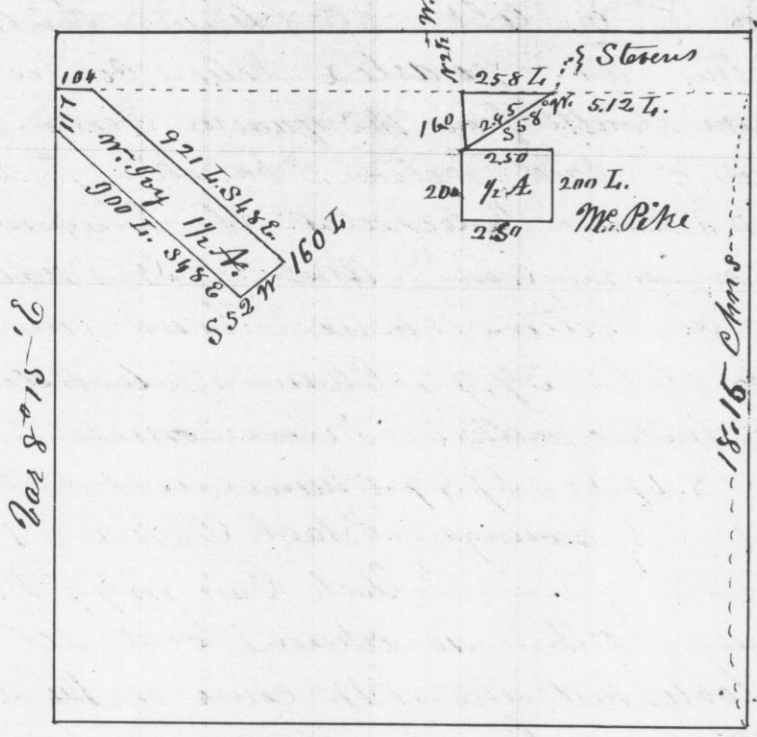


Survey made for William Joy and
 P. W. A. Mr. Pike and Colet Stevens
 in the S. W. quarter of the S. W. quarter of
 Section No. 13 in Township No. 3 North of Range
 No. 2 West of the 4th Principal Meridian

May 4th 1849

As shown by the following diagram with
 each man's name written on his lot
 S. W. 1/4 of S. W. 1/4 of Sec 13.

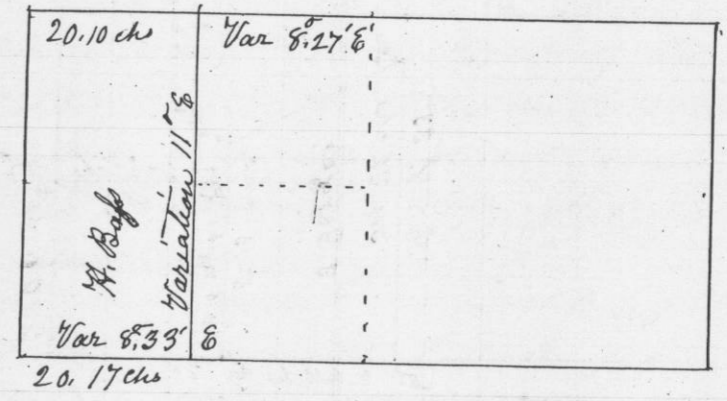


Bearing at the S. W. corner of Joy's lot.
 { Black Oak N 17 W 40 links

A true record
 Attest Geo. N. Stuntz
 District Surveyor
 of G. C. Wis.

Survey made for Henry Bap of the W. 1/2 of the
 S. W. 1/4 of Section No. 24 - T. 4 - R. 4 west of the 4th Principal
 Meridian

S. 1/2 of Sec - 24 - T. 4 - R. 4 -



Commencing at the 1/4 post on west side of Section - thence East
 to 1/4 post on East side - thence from 1/4 post on North side to 1/4 post
 on South side of Section - found Rock set in Centre of Section to
 be correct. Thence from 1/4 post on South side of Section, West to
 corner 40.34 chains, Var 8.30 E Intersected 10 links North of corner
 corrected back to & set 1/8 post - Bearings -

Box Elder N 52 1/2 W 61 links - W. Elm 14 N 61 W - - 3

Thence North without chaining - Corrected & set 1/8 post
 Double Lynn 18 N 5 E 192 links - Br. O. 4 N 77 1/2 W 132 links

I hereby certify that the above is a true plot &
 correct minutes of Survey, made by me this 11th day
 of May A. D. 1849

Geo. N. Stuntz
 District Surveyor
 G. C. Wis.
 Pr Stephen Mahood
 Deputy