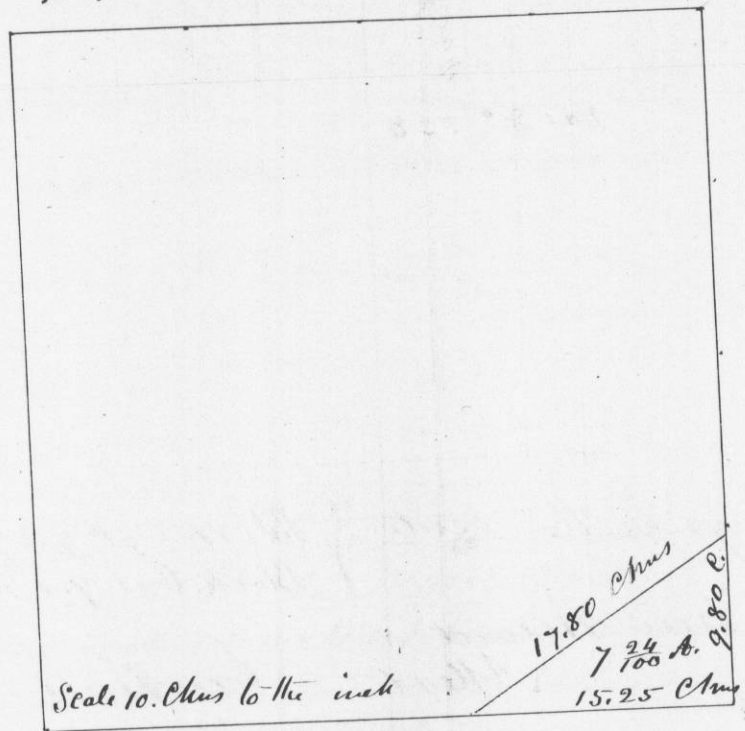


No. 579
 Survey made for Amos J. Thompson
 in Section No 25 in Township No 3 N
 of Range No 2 West of the 4th principal
 Meridian

Commencing at the South East
 Corner of said Section. Thence West
 on the Section line Variation 8.15° E fifteen
 Chains and 25 links Thence N. 58° E 17.80 chains
 to East line of said Section Thence South
 on said line nine chains and fifty links
 to the place of Beginning. Containing 7 ²⁴/₁₀₀ Acres
 Bearing at the S.W. Corner } Black Oak 10 N 5 W 61 links
 S E ¹/₄ of Sec 25. T. 3 N. 2. W.



I hereby certify that the above is
 a true record of said Survey made
 March 31st 1849

Geo. R. Stuntz
 Dist. Suror. of G. C. M.

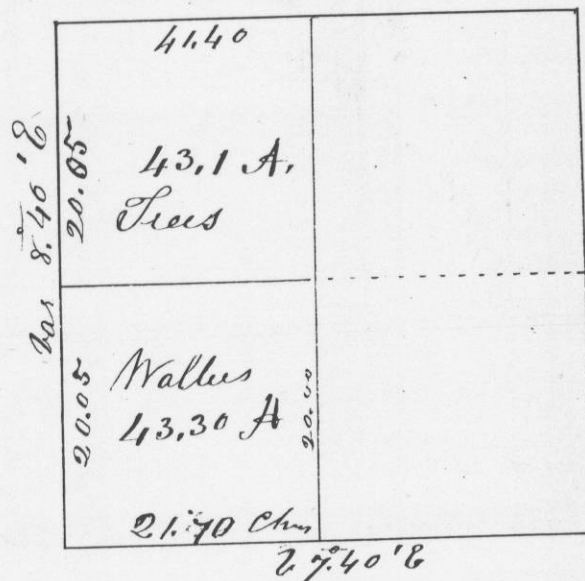
Survey made for John A. Walter and
 and John Lees in Section No 30. in
 Township No 3 North of Range No. 2 West of
 the 4th principal Meridian to wit the North
 West quarter of the North west quarter of Section
 for Lees and the South West quarter of North
 West quarter for Walter

Commencing at the N.W. Corner of Section
 Thence South Variation 8.40° E. At 40.10 Chains
 Intersected at quarter Section corner. Thence
 Correded back 20.05 Chains and established
 1/16 post } Red Elm 10 N 17° E 17 links
 3/16 post } Red Elm 7 S 69° E 38 links

Thence run East from quarter post on West side
 21.70 Chains to 1/8 post } White Oak 14 N 5 1/2 W 70 links
 } Sugar 12 N 72° E 30 links

Variation 7.40° East
 Thence North 20. Chains to 1/16 post bearing
 } White Oak 12 S 6 W 162 links
 } White Oak 10 N 23 1/2 W 95 links Thence North 20.
 Chains to 1/8 post } White Oak 18 N 39 W 75 links
 } White Oak 15 S 69° E 40 links

Thence West to the place of beginning 41.40 chains
 N.W. 1/4 of Sec 30 T. 3 N. 2.



A true Record
 ALLEY

Geo R Stuntz
 Dist. Suror. of