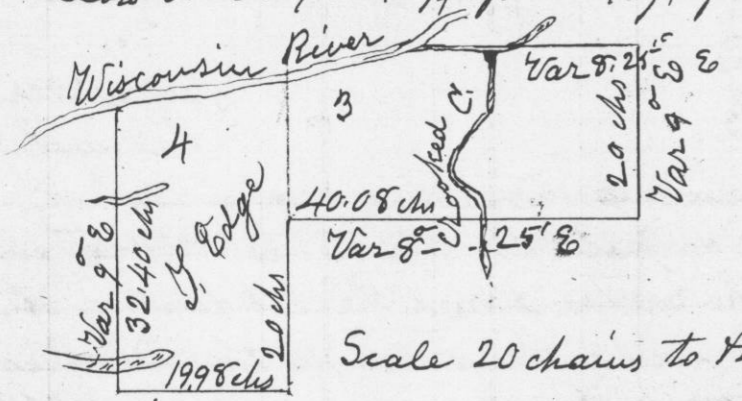


Survey made for Thomas Edge of the N.W. 1/4 of the S.E. 1/4 of Lots No 3 & 4 of Section No 33-38 Range No 3 west of the 4th principal Meridian = commencing the N.W. corner of Lot No 4, Bearings, B. Birch 10 N 77 1/2 W 11 links - W. Ash 8 5 12 W 11 links - Thence south 32.40 links to the S.W. corner of said section 33 - Bearings Br. O. S. N 89 1/2 E 52 links = Cherry 6 N 69 W 136 links - Thence East 19.98 links to 1/8 post, Bearings = Br. O. 12 5 85 E 34 links, B. O. 10 N 76 W 40 links = Thence North 20 chains to 1/16 post, Bearings B. Birch 14 5 5 E 17 links = B. Birch 10 5 77 1/2 E 15 links = Thence East 40.08 links to 1/16 post, Ash post marked 1/16 S, set in the prairie = Thence North 20 chains to 1/8 post, Ash post marked 1/8 S, set in the prairie, Thence West 1450 links to Slough, Thence along the North Edge of the same to its junction with the Wisconsin River = Thence with & down said River to the place of beginning

Lots No 3 & 4 & N.W. 1/4 of the S.E. 1/4 of sec 33-38, R. 3 -



Scale 20 chains to the Inch.

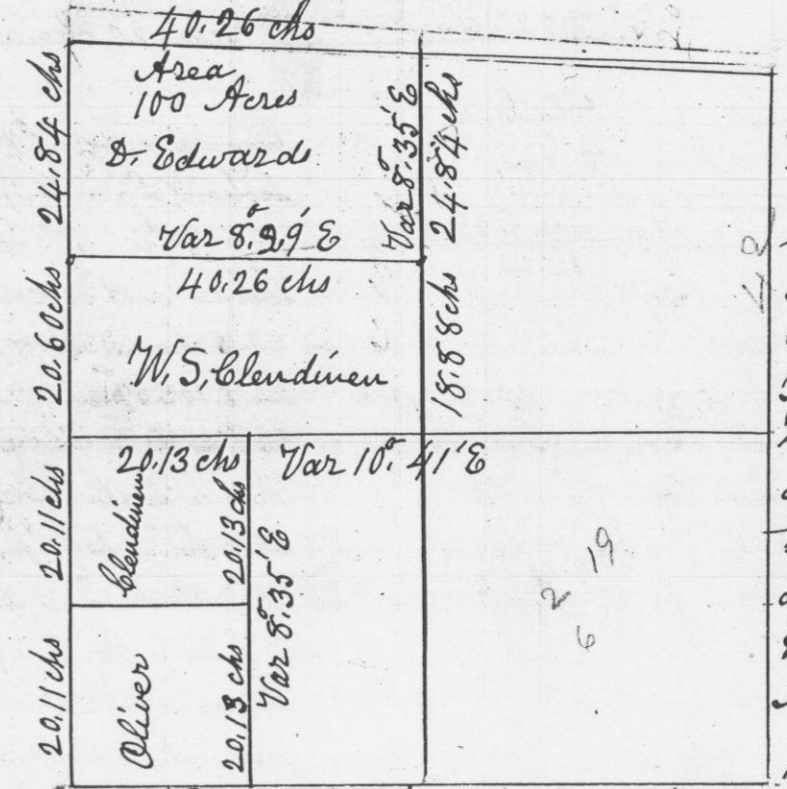
I hereby certify that the above is a true plot & correct minutes of survey made this 15th day of February A.D. 1849

Geo. R. Stuntz  
District Surveyor  
G. C. Wis.

Pr Stephen Mahood  
Deputy

Survey made for Darius Edwards of one hundred Acres off of the north side of the N.W. 1/4 of section No 5 of Township No 3 of Range No 3 West of the 4th Principal Meridian - March the 8th 1849.

Sec - 5 - 38 - R. 3 -



Scale 20 chains To 1 inch commencing at N.W. corner of section on Lower line. Thence South on section line to S.W. corner of section; set temporary post Thence East to 1/4 post on

South side of section; set temporary 1/8 post - Thence north from 1/4 post on South of section, Var 9 E - 84 chains - intersected 45 links East of 1/4 post on north side of section, which (1/4 post) was found by running from N.W. corner, to N.E. corner of section 80.52 chains = Thence from 1/4 post on East side of section, - West, Var 9 - 50 E - intersected 77 links north of 1/4 post - Corrected lines N. & S. and E. & West, and set 1/4 post in Centre of section - As the Law requires, Bearings Lynn 10 N 19 W 26 1/2 links - W. O. 14 5 66 E 36 links - Thence north to the Corner of 100 acre lot, being 24.84 chains from 1/4 post on north side of section bearings at S. East corner of 100 acre lot - Lynn 14 5 42 W 25 links - W. Elm 8 N 56 W 53 1/4 links - Thence West 40.26 chains to section line; corrected & set corner - Sugar 18 N 11 E 52 links; Elm 12 5 79 E 44 links = 1/4 post on north side of section on Lower line Elm 10 5 21 W 47 links; Double Ironwood 6 5 18 E 58 1/2 links

I hereby certify that the above & foregoing is a true plot and correct minutes of survey

Geo. R. Stuntz  
District Surveyor  
G. C. Wis.

Pr Stephen Mahood  
Deputy

4476  
1/320