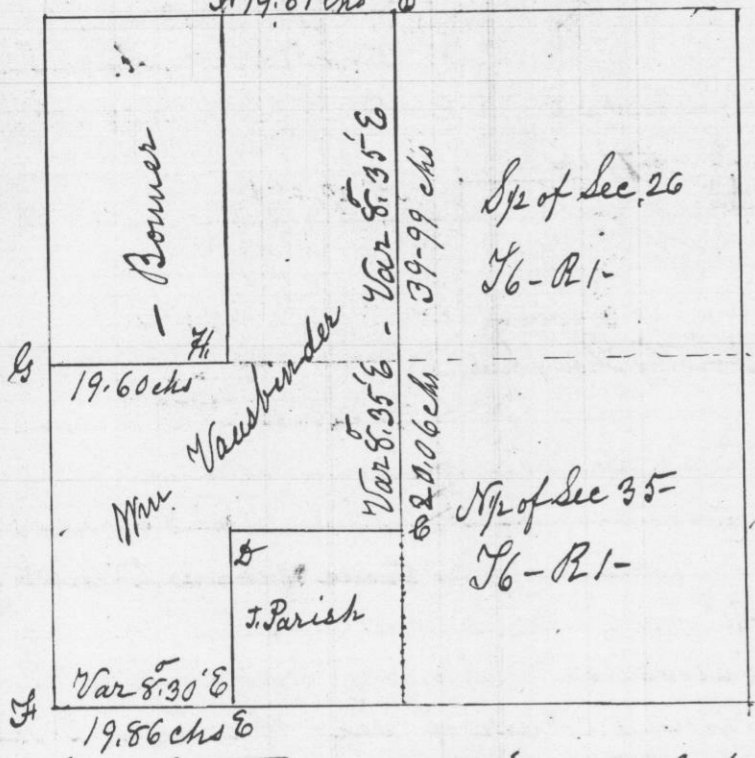


Survey made for William Vausbinder of the  
 E<sup>1</sup>/<sub>4</sub> of the S.W<sup>1</sup>/<sub>4</sub> of Section N<sup>o</sup> 26 and the W<sup>1</sup>/<sub>2</sub> and  
 N.E.<sup>1</sup>/<sub>4</sub> of the N.W<sup>1</sup>/<sub>4</sub> of Section N<sup>o</sup> 35 T<sup>6</sup>-R<sup>1</sup> west of  
 the 4<sup>th</sup> Principal Meridian Oct 11<sup>th</sup> & 12<sup>th</sup> 1848  
 N<sup>1</sup>/<sub>2</sub> of Sec 35 & S<sup>1</sup>/<sub>2</sub> of Sec 26 T<sup>6</sup>-R<sup>1</sup>-  
 A 19.81 chs B



Scale 20 chains to the inch

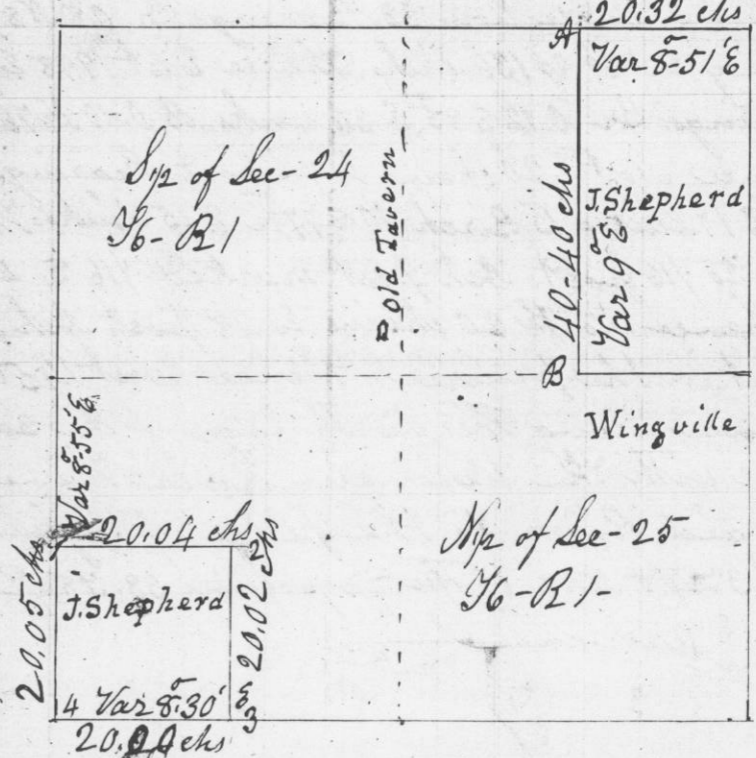
The above sections were divided & subdivided by  
 running thro, the same as the Law requires; and  
 all the corners Established in accordance with  
 the requirements of Law-

- A & B, Posts appropriately marked set in Mounds
- U.C. Br. 0.10 S 42 1/2 E 19 links - Br. 0.14 N 85 W 39 links
- 25 G. W. 0.15 S 85 W 53 links - W.O. 5 East 35 "
- 23 E - Pin. 0.10 N 22 E 22 " Pin. 0.14 N 74 1/2 W 97 "
- 4 G. original
- W.H. - Pin. 0.15 S 39 E 109 links - Br. 0. Stump 10 S. 70 W 6 links

I hereby certify that the above is a true plot and  
 correct minutes of survey

Geo. R. Stuntz  
 District Surveyor  
 G. C. Wis  
 Pr Stephen Mahood  
 Deputy

Survey made for John Shepherd of the E<sup>1</sup>/<sub>2</sub> of the  
 S.E.<sup>1</sup>/<sub>4</sub> of Sec N<sup>o</sup> 24 and the S.W<sup>1</sup>/<sub>4</sub> of the N.W<sup>1</sup>/<sub>4</sub> of Sec N<sup>o</sup> 25  
 T<sup>6</sup>-R<sup>1</sup> west of the fourth Principal Meridian  
 October 13<sup>th</sup> & 14<sup>th</sup> 1848  
 S<sup>1</sup>/<sub>2</sub> of Sec-24 & N<sup>1</sup>/<sub>2</sub> of Sec 25 T<sup>6</sup>-R<sup>1</sup>-



Scale 20 chains to the inch

In the above surveys the sections were each divided by  
 running from 1/4 post to 1/4 post East & West, and North  
 & South thro the sections and the subdivision of the same  
 made after the same manner, as the Law requires

I hereby certify that the above and foregoing is a  
 true plat and correct statement of said surveys

Geo. R. Stuntz  
 District Surveyor  
 G. C. Wis  
 Pr Stephen Mahood  
 Deputy