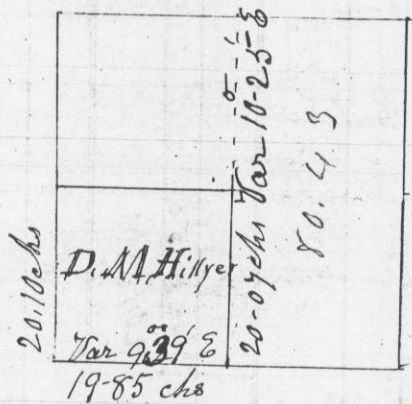


Survey made for Daniel M. Hillyer of the S.W. 1/4 of the S.W. 1/4 of Section No 13-14-R6 of the 4th Principal Meridian, Sept. 22<sup>d</sup> 1848 S.W. 1/4 of Sec-13-14-R6-W



7937

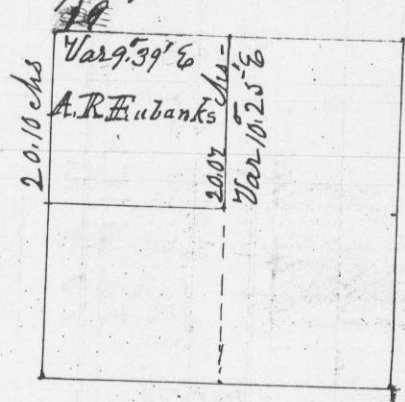
Commencing at the 1/4 Post on the West side of Section Thence East through Section - Var 9-30 E - 179-35 links intersected 26 links South of 1/4 Post on East side of Section - Thence from 1/4 on North side of Section Var 10-55 E 80-43 chains - intersected 70 links East of 1/4 Post on South side of Section - Thence West from 1/4 Post on South side of Section to Corner 39-70 chains - Corrected back 19-85 chains & Set 1/8 Post - Post Marked 1/8 S - Thence North 40-14 chains to 1/8 Post West of Centre - corrected back 20-07 chains - Set 1/16 post; marked 1/16 S - 1/16 Post on Section line Set in Survey of Section No 14-14-R6 West

I hereby certify that the above is a true plot & correct minutes of Survey

Geo. R. Stuntz  
District Surveyor  
G. L. Wis-

Dr. Stephen Mahood  
Deputy

Survey made for Amos P. Eubanks of the N.W. 1/4 of the S.W. 1/4 of Section No 13-14-R6 West of the 4th Principal Meridian - Sept. 22<sup>d</sup> - 1848 S.W. 1/4 of Sec-13-14-R6-



Commencing at 1/4 Post on West side of Section - Thence East through Centre, to 1/4 Post on East side of Section Thence from 1/4 Post on North side of Section to 1/4 Post on South side of Section - Corrected - Thence from 1/8 Post on South side of S.W. 1/4, to 1/8 Post on North side of S.W. 1/4 - Corrected & Set 1/8 Post - Marked 1/8 S - Corrected back 20,07 chains - Set 1/16 Post - 1/16 Post on section line Set in Survey of Sec-14-14-R6 - I hereby certify that the above is a true and correct plot & minutes of Survey

Geo. R. Stuntz  
District Surveyor  
G. L. Wis-

Dr. Stephen Mahood  
Deputy