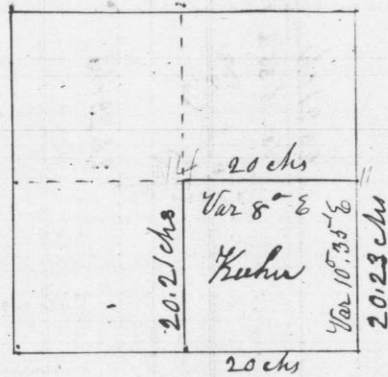


Survey made for Emrick Kuhn of the S. E. 1/4 of the N. W. 1/4 of Section N<sup>o</sup> 30 in Town 4 North of Range 3 west of the 4<sup>th</sup> Principal Meridian  
 N. W. 1/4 of Sec-30-T4-R3

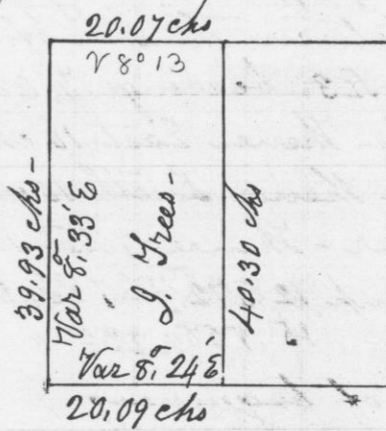


Commencing at the 1/4 Post in centre of section - set by J. E. Freeman - bearings W. O. 16 N 49 1/2 E 84 links - R. O. 18 N 66° W 93 links -  
 Thence North 20.23 chains to 1/16 Post W. O. 14 S 59° E 30 links -  
 W. O. 20 N 40° W 57 links - Thence West 20-chains to 1/16 Post  
 Elm 26 S 76° W 5 links - Ironwood 6 N 83 1/2 E 24 links -  
 Thence South 20-21 chains to 1/8 Post set by Freeman bearings - W. O. 14 N 70° E 60 links - W. O. 16 North 27 links  
 Thence East 20 chains to beginning

I hereby Certify that the above is a true plot & correct minutes of Survey made August 11<sup>th</sup> 1848

Geo. R. Stuntz  
 District Surveyor  
 G. C. Wis  
 for Stephen Mahood  
 Deputy

Survey made for John Trees of the W. 1/2 of the N. E. 1/4 of Section N<sup>o</sup> 31 of Township N<sup>o</sup> 3 north of Range N<sup>o</sup> 2 west of the 4<sup>th</sup> Principal Meridian - Sept. 18<sup>th</sup> 1848  
 N. E. 1/4 of Sec-31-T3-R2, W



8.33 N 45 line  
 821 S 100 W  
 823 S 100 W

7732  
 3798  
 39-37  
 3869  
 13

Commencing at the 1/4 Post on north side of section - Thence South Var 9° E - 79.32 chains - intersected 63 links East of 1/4 post  
 Thence from 1/4 post on west side of section Var 9° E - intersected 90 links north of 1/4 post on east side of section - Corrected back 20.09 chains to 1/8 post - set post in prairie bottom - Thence west 20.09 chains - set centre marked on each square, 1/4 S - from which the N.W. corner of a stone chimney to the west log cabin (occupied by J. Williamson) bears South 7 links - Thence from 1/4 post on north side of section, East Var 9° E - 40-14 chains; intersected 43 links North of corner - Corrected back 20.07 chains set 1/8 post  
 bearings - W. O. 18 S 15° W 28 links - W. O. 16 N 9 1/2 W 51 links - Thence South 40.30 chains to 1/8 post first set

I hereby certify that the above is a true plot and correct record of Survey

Geo. R. Stuntz  
 District Surveyor  
 G. C. Wis  
 for Stephen Mahood  
 Deputy