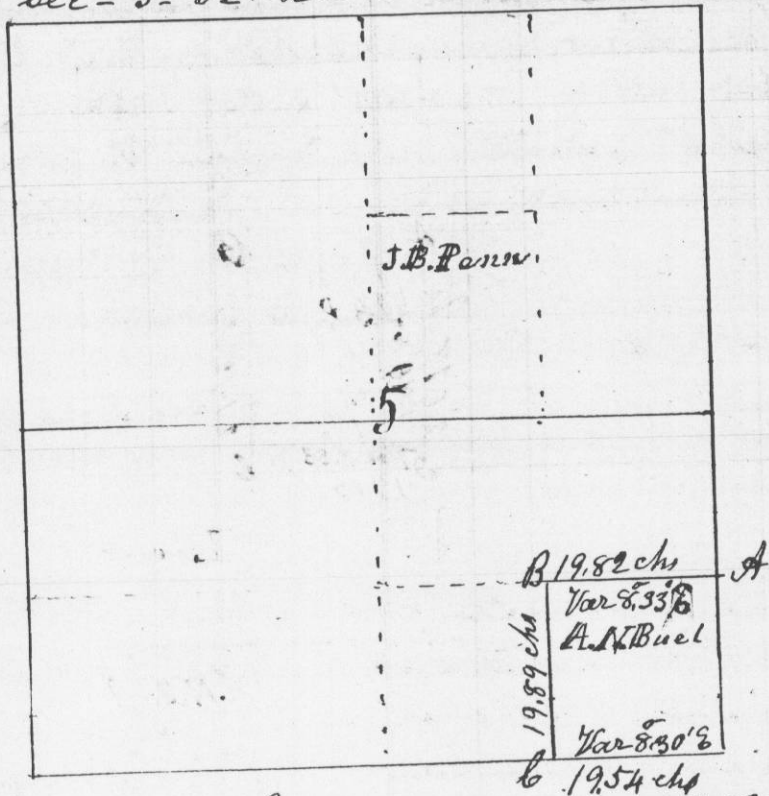


Survey made for Amos N. Buel of the S^o/₄ of the S^o/₄ of section N^o 5- T^o 2-R^o 2 west of the 4th Principal Meridian August 2^d 1848 Sec - 5- T^o 2-R^o 2 W



Commencing on the line running N & S through the centre of section at 1/16 Post South of Centre. Thence East Var 8° 33' E; 39.64 links to section line. Set post at A. Ironwood 5 N 10° W 1 links; Sugar 18 S 10° E 53 1/2 links Thence corrected back west 19.82 chains - set 1/16 Post at B. Elm 16 S 20° W 37 1/2 links - Sugar 20 N 63° E 45 links Thence South 19.89 links to section line at C. set 1/8 Post W. O. 15 N 82° E 161 links - Sugar 12 N 46° W 61 links - S.E. corner of section, Original W. O. 24 N 74° W 4 links Sugar 13 N 43° E 65 links

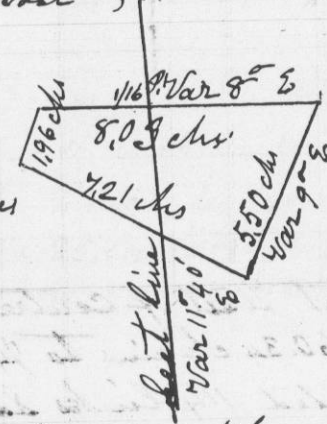
I hereby certify that the above is a true Plot and correct minutes of survey

Geo. R. Stuntz
District Surveyor
G. C. Wis

By Stephen Mahood
Deputy

Survey made for John B. Turley of a lot of land on the S.E. 1/4 of the N.E. 1/4 of section N^o 20 and on the S.W. 1/4 of the N.W. 1/4 of section N^o 21 in Town 4 N. and Range 4 west of the 4th Principal Meridian. Also Established the 1/16 Post on the line between the N.E. 1/4 of section N^o 20 and the N.W. 1/4 of section N^o 21 T^o 4-R^o 4-west

Bearings at 1/16 Post } Br. O. 5 N 69° E 26 links }
" " 8 S 72° W 70 " }



Area 2 8/100 Acres

Scale 5 chains to the inch

Commencing at 1/16 Post - Thence East 4.78 chains Var 8° E Bearings } Br. O. 5 N 71° E 48 links - Br. O. 5 N 38 1/2° W 56 links Thence S 23 1/3° W 5.50 chains P. O. 10 N 75 1/2° W 122 links Thence N 61° W 7.21 chains Var 9° E. P. O. 11 corner - Thence N 15° E. 196 links Set Post Thence East 3.25 chains to the place of beginning

I hereby certify that the above is a true Plot and record of survey made by me August the 5th 1848

Geo. R. Stuntz
District Surveyor
G. C. Wis

By Stephen Mahood
Deputy