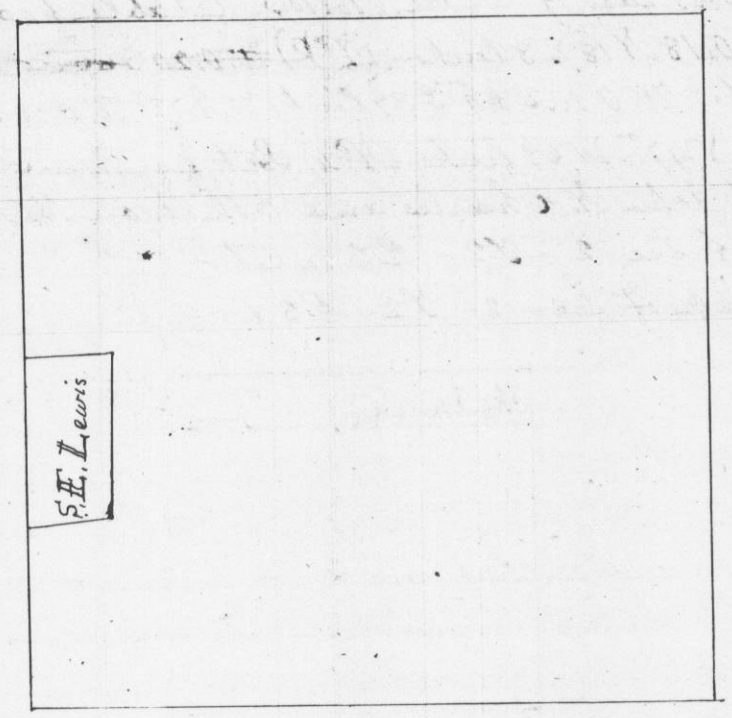


Survey made for S. E. Lewis of a lot of land in
 Section No 35 in Township No 3 N. Range No 3 west of
 the 4th Principal Meridian
 Commencing on the section line between sections 34 &
 35 = 168 links North of the S. E. corner of out lot No 161 on
 Section No 34 - Thence North Var 8° E on section line 9.74 links
 to East Street in W. Town of Potosi - Thence N. 87° E 4.87 links
 Thence S 1° W 9.50 links - Thence S 85° W 4.65 links

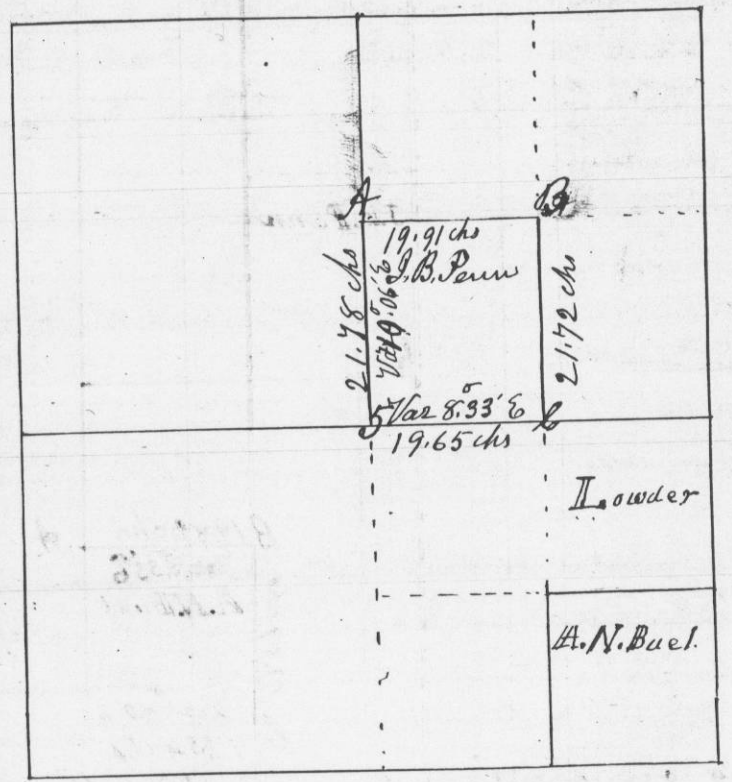
Section No 35 - T3 - R3 - W -



I hereby certify that the above is a true record of
 Survey - June 21st 1848

Geo. R. Stuntz
 District Surveyor
 G. C. Wis -

Survey made for Jacob B. Penn of the 1/2 of the 1/2
 of the North East 1/4 of Section No 5 - T2 - R2 west of the 4th
 Principal Meridian - August 2^d 1848
 Sec - 5 - T2 - R2 -



Commencing at 1/4 Post on west side of section Thence East
 Var 8° E: 79.69 chains - intersected 78 links South of 1/4 Post on East
 side of section - Thence South on section line 39.98 Var 9° E
 intersected ^{7 links west of} section corner - Thence West Var 8° 30' E: 39.07 links
 intersected at 1/4 Post on South side of section - Thence North
 through Centre of Section 83.36 chains: Var 9° E, intersected 154
 links East of 1/4 Post - Corrected back & set 1/4 ^{post} in Centre -
 W. O. 16 1/4 Var 47° E 31 1/2 links - W. O. 22 N 32 E 105 1/2 links - Thence East
 Var 8° 33' E 19.65 links - Thence North 43.44 chains - Thence from N. W.
 Corner of Section ^{west} 25 links to 1/4 Post - Thence, corrected
 back, set 1/16 Post at A, North of Centre set Post W. O. 14 S 19 1/3 E 81 links
 Elm 10 N 57 1/2 W 34 links - Var on N & S line through Centre 10.06 E
 Thence from 1/16 Post East Var 8° 33' E: 19.91 chains - set Post at B.
 W. O. 26 N 54 E 35 links - Sugar 12 S E 7 1/2 links - Thence South 21.72 links - set
 1/8 Post ^{at B} W. O. 14 N 65 W 61 1/2 links - B. O. 12 S 68 1/2 E 54 links - ~~set Post~~

I hereby certify that the above is a true & correct record of Survey
 Geo. R. Stuntz - District Surveyor
 G. C. Wis -
 By Stephen Mahood Deputy