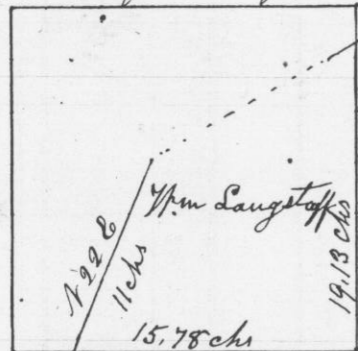


Survey made for William Langstaff of a lot of land in the N.W. 1/4 of the S.E. 1/4 of Section No 26-73 R3 west of the 4<sup>th</sup> Principal Meridian March the 22<sup>d</sup> 1848

N.W. 1/4 of S.E. 1/4 of Sec 26 T3 N3



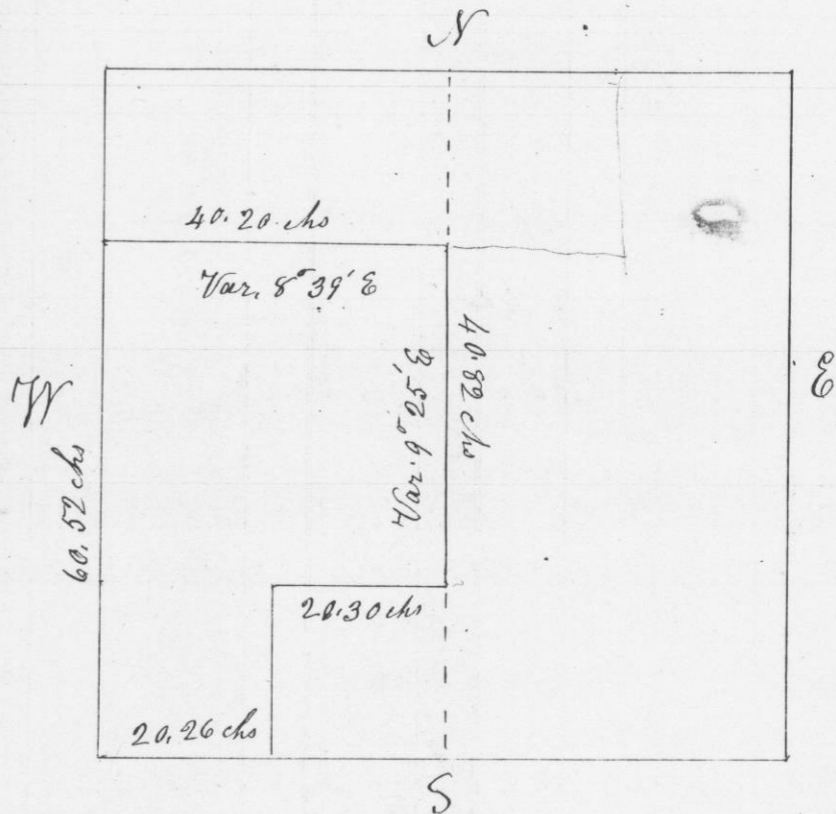
Commencing one chain South of N.E. corner of said N.W. 1/4 of the S.E. 1/4 of Sec 26-73-R3-Bearings at N.E. corner B.O. 5 N52 1/2 W 19 links  
" " 4 N 11 W 23 "

Thence South to S.E. corner 19.13 links- Thence West on South line of said 40 Acres- 15.78 links- Thence N 22 E 11 chains to the South line of Jones' lot, & 410 links from Jones' S.W. corner- Thence along Jones' line and the Schoolhouse lot to the place of beginning

I certify that the above is a true record of Survey made March 22<sup>d</sup> 1848

Geo. R. Stuntz  
District Surveyor  
G. C. Wis-

Survey made for William Painter of the S/2 of the N.W. 1/4, N/2; and S.W. 1/4 of the S.W. 1/4 of Section No 27 of T5, R1 west of the 4<sup>th</sup> Principal Meridian in Grant County W.V.



Commencing at corner of sections 27, 28, 33 & 34 Thence N 60.52 chains to Stake without bearings- Thence E 40.20 chains to corner of N.W. 1/4 of S.E. 1/4 of same section- Thence South 40.82 chains to Stake, no bearing  
Thence West 20.30 chains to 1/16 Post = B2, 0.16 S 33 E 117 links; no other  
Thence South 20.13 chains to 1/8 Post = W, 0.22 N 46 E 70 1/2 links  
" " 17 " 82 W " "

Thence West 20.26 chains, to place of beginning

I hereby certify that the above is a true and correct record of survey made by me, March 9<sup>th</sup> 1848

Geo. R. Stuntz District Surveyor  
G. C. Wis-  
By Stephen Mahood  
Deputy